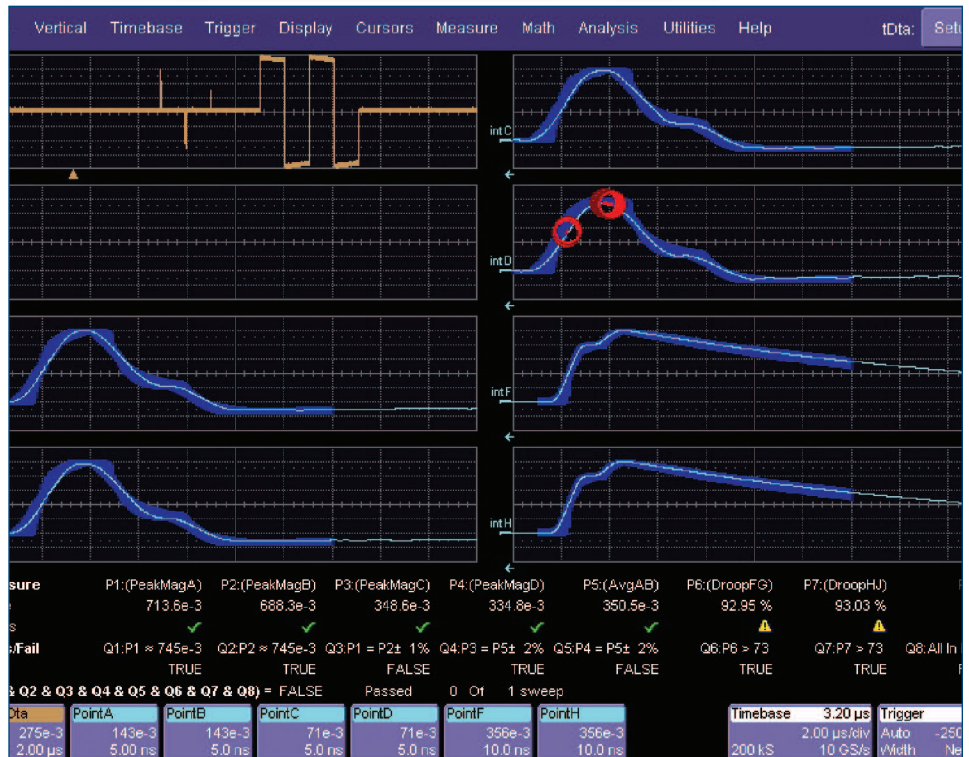


ENET – ETHERNET TEST SOFTWARE PACKAGE

Features

- Compliant with IEEE 802.3-2000 and ANSI X3.263 standards
- Eliminates the need for external math programs
- Speeds up testing by performing multiple tests on one acquisition
- Easy-to-use tests and calculations are performed inside the oscilloscope
- Complete tests for 1000Base-T, 100Base-TX, and 10Base-T
- Mask testing



1000Base-T Mode 1 Mask Test.

ENET is a software option package that performs complete electrical testing for 1000Base-T and 100Base-TX Ethernet standards.

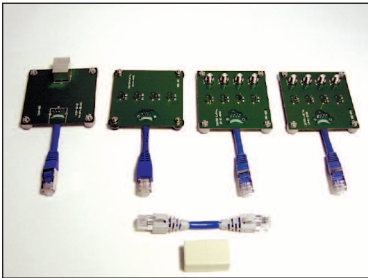
Jitter and pulse mask tests are performed with automatic waveform alignment, and all test results feature pass/fail indicators corresponding to the standard being tested. 10Base-T

pulse mask testing is also supported, using the supplied compliance mask.

Document your test and compliance results with LeCroy's LabNotebook™ report generator.

Two test fixture kits provide for all the test loads and conditions as described in IEEE specification.

Specifications and Ordering Information



TF-10BT Fixture Set

TF-10BT

The TF-10BT fixture set consists of four fixtures designed to support the test requirements for 10Base-T Ethernet.

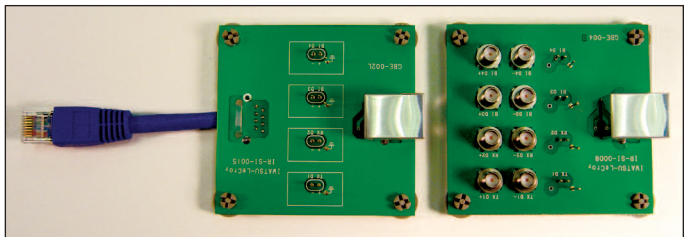
The fixture set includes a twisted pair model along with three test loads. The test loads include 2 reactive loads (designated load 1 and load 2 in the IEEE802.3 specification) and a 100 ohm resistive load. The loads provide connection pins for a differential probe and are compatible with WaveLink Active Differential Probes D350ST and D300A-AT from LeCroy.

ENET is supported by 2 GHz or higher bandwidth oscilloscopes: WaveRunner® 6200A, WavePro® 7200A, or higher bandwidth X-Stream oscilloscopes.

TF-ENET

TF-ENET includes a set of 2 test fixtures for testing Ethernet signals on twisted pair cables (UTP) for 100Base-T and 1000Base-T.

The set includes a feed-through adapter for measuring live traffic signals and a terminated fixture for off-line testing. The terminated fixture includes removable 50 ohm terminations to allow direct connection to an oscilloscope or the application of a disturbing signal. Both fixtures include pins on each wire pair for attaching a differential probe.



TF-ENET Fixture Set

Specifications

1000Base-T Tests

Mode 1:	Pulse Masks, Droop
Mode 2:	Master Jitter
Mode 3:	Slave Jitter
Mode 4:	Distortion

100Base-T Tests

Duty Cycle Distortion
Jitter
Differential Output Voltage
Rise and Fall Time

10Base-T Tests

Mask Testing

Ordering Information

Product Description

Ethernet Test Software Package

Product Code

ENET

Recommended Accessories

WaveLink 4 GHz Differential Probe with Adjustable Tip Module	D300A-AT*
WaveLink 4 GHz, 5 V Differential Probe with Small Tip Module	D350ST*
Extra Square Pin Lead for the D350ST	D350ST-SP
2.5 GHz, 0.7 pF Active Probe (÷10), Small Form Factor	HFP2500

*For a complete probe, order a WL300 Probe Body with the Probe Tip Module.



1-800-5-LeCroy www.lecroy.com

Local sales offices are located throughout the world.
To find the most convenient one visit www.lecroy.com

Product Description

Recommended Accessories (continued)

Ethernet Compliance Test Fixture for 10Base-T	TF-10BT
Ethernet Fixture for 100Base-T/1000Base-T [Includes a Set of 2 Test Fixtures Signals on Twisted Pair Cables (UTP)]	TF-ENET

Customer Service

LeCroy oscilloscopes are designed, built, and tested to ensure high reliability. In the unlikely event you experience difficulties, our digital oscilloscopes are fully warranted for three years.

This warranty includes:

- No charge for return shipping
- Long-term 7-year support
- Upgrade to latest software at no charge