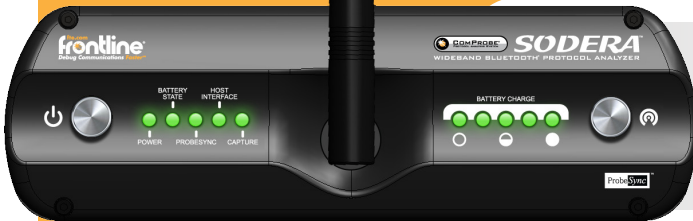


**frontline**

**SODERA™**

WIDEBAND BLUETOOTH® PROTOCOL ANALYZER



Frontline Sodera is a highly portable, wideband Bluetooth protocol analyzer that captures ALL Bluetooth traffic.

**Key Features and Benefits**

- Capture ALL over-the-air Bluetooth packets
- Every Bluetooth channel captured concurrently for decryption and analysis at any time
- With the Audio Expert System, quickly pinpoint Bluetooth protocol-related audio issues
- All profiles and protocols supported through Bluetooth 4.2.
- Frontline software and familiar data views
- Intuitive analysis of multiple wireless devices and connections
- User-replaceable battery and small footprint lets you work when and where you need to
- Software defined radio architecture is ready for future Bluetooth updates
- Support for CSRMESH and Bluetooth mesh technology
- Spectrum analysis helps identify potential RF conflicts

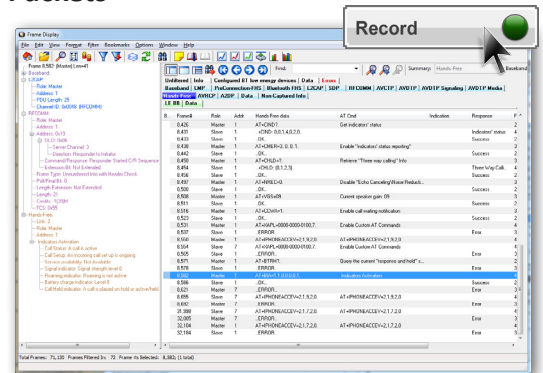


We have redefined protocol analysis with a tool that makes it easier for professional developers and engineers to get great new wireless products to market faster. Simply turn on the Frontline Sodera analyzer to capture all Bluetooth packets, including discovery/connection traffic and SSP pairing in lab, automotive and other remote settings. Information is collected and recorded for decryption and analysis live or at any time after capture. Select the conversation you care about for those

packets to be analyzed by the industry-best Frontline software for the most reliable, complete and mature packet analysis in the world today, featuring full Bluetooth 4.2 support.

**One Click Capture of All Bluetooth Packets**

Frontline Sodera concurrently captures all Bluetooth packets (BR/EDR/LE) across all channels, including paging, inquiry, secure connections, secure simple pairing, and data exchange packets.



**Post-Capture Decryption and Debugging**

Start the analyzer and begin capturing - the raw data can be decrypted, decoded and filtered later.



**Identify Root Cause of Bluetooth Audio Problems**

Frontline Sodera works with the Bluetooth Audio Expert System software module to quickly pinpoint Bluetooth protocol-related issues by synchronizing audio, codec, and Bluetooth protocol events directly back to the protocol trace.

**The Ultimate in Portability**

Frontline Sodera's compact size and quick-change battery allow easy, on-the-go testing in automobiles and other power-sparse environments.

**Future-Ready**

Bluetooth wireless technology is ever-changing. Frontline Sodera's software-defined radio architecture means that it fully supports Bluetooth 4.2, and is ready to grow with updates to the Bluetooth specification.



## Hardware Specifications

- **Power:**  
9-17 VDC
- **Dimensions:**  
6.25" wide X 2.125 tall" X 6.5 deep"  
158.75 mm X 53.975 mm X 165.1 mm
- **Weight:**  
2.2 lbs
- **Bus Type:**  
USB Standard Type-B
- **Operating Frequencies:**  
2402 MHz – 2480 MHz
- **Sensitivity Range**  
-85.0 dBm to +10 dBm
- **Supported Demodulators**  
BR/EDR and LE (GFSK,  $\pi/4$  DQPSK, 8DPSK)
- **Timestamp Resolution**  
125 ns
- **Operating Temperature:**  
5° to 35° Celsius (41° to 95° Fahrenheit)
- **Humidity:**  
Operating: 10% to 90% RH  
(noncondensing)
- **Regulatory Compliance**

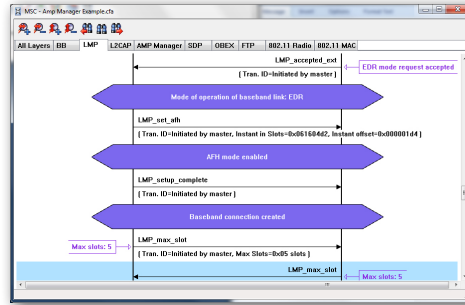
PSE	FCC part 15 B
CE	NRTL
ARIB T-66	EMC
EN 60950	

Frontline Sodera is fully *Bluetooth* 5.0 compliant, as well as all previous *Bluetooth* specifications (1.0, 1.1, 2.0+EDR, 2.1+EDR, 3.0, 4.0, 4.1 and 4.2).



## The Software You Already Use

Frontline Sodera works seamlessly with Frontline Protocol Analysis Software; “Frame Display” for packets in tabular format based on profiles and protocols; “Timeline View” to see packets displayed sequentially in a clear graphical timeline; Message Sequence Charts; and Packet Error Rate Statistics - all views are synchronized right down to the packet.

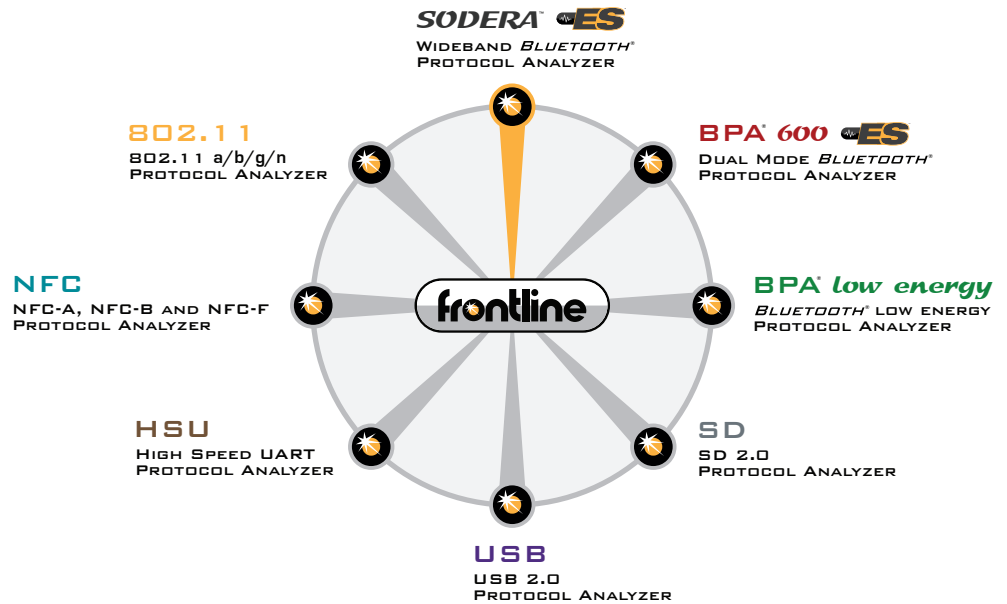


## Supported Configurations

- OS Supported: Win 7 and Win 8
- USB Port: USB 2.0 or USB 3.0 High-Speed

## Minimum System Requirements

- Processor: Core i5 processor at 2.7 GHz
- RAM: 4 GB
- Free Hard Disk Space: 20 GB



## The Frontline Modular Approach

Frontline software is at the core of Frontline protocol analysis, allowing technology-specific hardware interfaces to work individually or in combination with other hardware interfaces. This modular approach gives the developer or analyst the widest possible range of scenarios for debugging complex communications.

### To order or for more information:

www.fte.com  
sales@fte.com  
1.800.359.8570 US & Canada  
+1.434.984.4500  
Fax: 434.984.4505



**TELEDYNE LECROY**  
Everywhere you look™