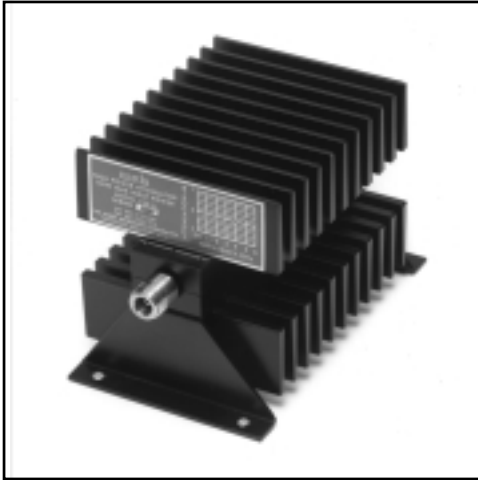


Attenuators



DC-6 GHz

TYPE N HIGH POWER BI-DIRECTIONAL FIXED COAXIAL ATTENUATORS

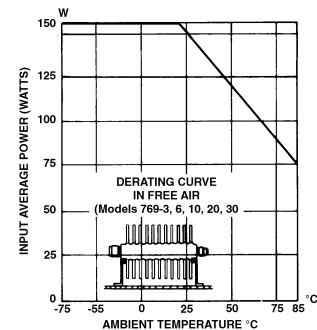
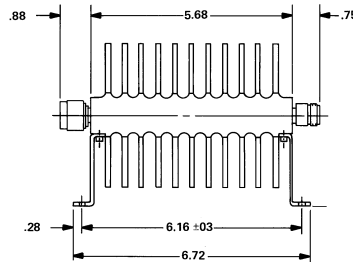
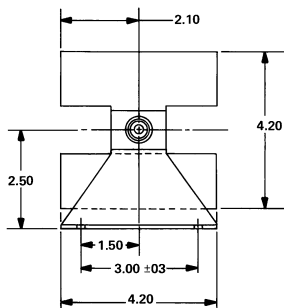
- High Power (150 watts average)
- 3, 6, 10, 20, and 30 dB Versions

SPECIFICATIONS

FREQUENCY RANGE (GHz)	MODEL	ATTENUATION dB		POWER INPUT		VSWR (Max) DC-6	WEIGHT (Max)		
		NOMINAL	DEVIATION DC-2.0	2-6	AVG. (W) Max		PEAK (kW) Max	Lbs	Kg
DC-6	769	3	±0.4	±.75	150	3	1.35	3.3	1.5
		6	±0.4	±.75	150	3	1.35	3.3	1.5
		10	±0.4	±.75	150	3	1.35	3.3	1.5
		20	±0.5	±1.0	150	3	1.35	3.3	1.5
		30	±0.5	±1.0	150	3	1.35	3.3	1.5

ORDERING INFORMATION: Specify model number and add dash number suffix for attenuation in dB.
For example: 769-3

OUTLINE DRAWINGS



All dimensions are Max. unless otherwise specified.