

**DC-11 GHz****Type N Medium Power
Bi-Directional Fixed
Coaxial Attenuators**

- 20 and 50 Watts
- Small Size
- Stainless Steel Connectors

Specifications

FREQUENCY RANGE GHz	MODEL	ATTENUATION dB			POWER INPUT		VSWR (max)				WEIGHT (max)		
		NOMINAL	DEVIATION		AVG. W (max)	PEAK kW (max)	DC-1	1-4	4-6	6-11	oz	gr	
DC-11	768	3	±.25	±.50	±.75	20	1	1.10	1.15	1.20	1.30	5.6	159
		6	±.25	±.50	±.75	20	1	1.10	1.15	1.20	1.30	5.6	159
		10	±.25	±.50	±.75	20	1	1.10	1.15	1.20	1.30	5.6	159
		20	±.25	±.50	±.75	20	1	1.10	1.15	1.20	1.30	5.6	159
		30	±.25	±.50	±.75	20	1	1.10	1.15	1.20	1.35	5.6	159

FREQUENCY RANGE GHz	MODEL	ATTENUATION dB		POWER INPUT		VSWR (max)		WEIGHT (max)		
		NOMINAL	DEVIATION	AVG. W (max)	PEAK kW (max)	DC-1	1-4	oz	gr	
DC-4	766	3	±0.25	±0.50	20	1	1.10	1.15	5.6	159
		6	±0.25	±0.50	20	1	1.10	1.15	5.6	159
		10	±0.25	±0.50	20	1	1.10	1.15	5.6	159
		20	±0.25	±0.50	20	1	1.10	1.15	5.6	159
		30	±0.75	±0.75	20	1	1.10	1.35	5.6	159

FREQUENCY RANGE GHz	MODEL	ATTENUATION dB		POWER INPUT		VSWR (max)		WEIGHT (max)		
		NOMINAL	DEVIATION	AVG. W (max)	PEAK kW (max)	DC-3	3-5	oz	gr	
DC-5	765	3	±0.30	±.50	50	2	1.20	1.30	15.5	440
		6	±0.30	±.50	50	2	1.20	1.30	15.5	440
		10	±0.30	±.50	50	2	1.20	1.30	15.5	440
		20	±0.30	±.50	50	2	1.20	1.30	15.5	440

NOTE: Temperature Coefficient: 0.0006 dB/dB/°C; Power Coefficient: 0.0005 dB/dB/watt

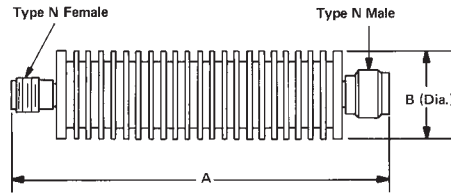
ORDERING INFORMATION: Specify model number and dash number suffix for attenuation in dB.
For example: 768-3



Attenuators

50 Years of
Excellence

Outline Drawings



Models 765, 766, 768

Model No.	A	B
765	6.99	1.64
766	3.07	1.52
768	3.07	1.52

All dimensions are max. unless otherwise specified.

