

NOW AVAILABLE:
BLUETOOTH
CONNECTIVITY

SPECIFICATIONS

PERFORMANCE

Azimuth accuracy: 0.5°
Tilt and Roll accuracy: 0.2°
Position accuracy: 60 cm with SBAS
Start up time: < 30 seconds

CONNECTIVITY

Bluetooth
Wi-Fi
USB Cable
Save an alignment on the tool

PHYSICAL

Smart Aligner Tool
(US Patent No. 10,527,418)

Dimensions: 19" x 4.5" x 3"
(48.3 cm x 11.4 cm x 7.6 cm)
Weight: 4 lb (1.8 kg)

Universal Mounting Bracket
(US Patent No. 8,436,779)

Dimensions: 19" x 5" x 3"
(48.3 cm x 12.7 cm x 7.6 cm)
Weight: 4 lb (1.8 kg)

Tool Bag

Heavy Duty Tool Bag with connection points for carrying the Smart Aligner Tool

Ruggedized Carrying Case

Dimensions: 21" x 16" x 8.5"
(53.3 cm x 40.6 cm x 21.6 cm)
Weight: 12 lb (5.4 kg)

TOTAL WEIGHT 20 lb (9.1 kg)

BATTERY

Type: Rechargeable lithium ion
Operation time: >10 hrs (over 100 alignments)

Battery charger: AC wall charger and DC car charger

ENVIRONMENTAL

Operational temp: -22°F to +158°F
(-30°C to + 70°C)
Sealing: NEMA 4X, IP63
Shock/vibration: IEC 68-2-27 / IEC 68-2-6
EMI: FCC Part 15 Subpart B: 2008 and ICES-003:2004

REPORTING

Smart Aligner App for Android and iOS
Full closeout reports with up to 10 images
Formats: PDF, CSV and JPEG (screenshot)
Custom reports available



COMPACT. POWERFUL. SMART.



Smart^(TM) Aligner
by MultiWave Sensors

LIKE NO OTHER ANTENNA ALIGNMENT TOOL

(905) 857-4481

MULTIWAVESENSORS.COM
SALES@MULTIWAVESENSORS.COM

MultiWave Sensors



1. oDAS Small Cell Antenna
2. Microwave Dish Antenna
3. Ericsson AIR 5121 Antenna
4. RF Elements Symmetrical Horn
5. Ubiquiti airFiber Backhaul Antenna

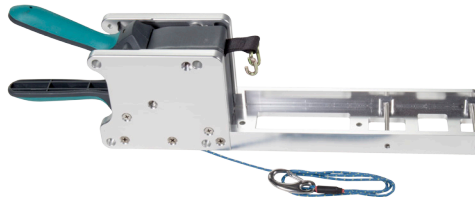
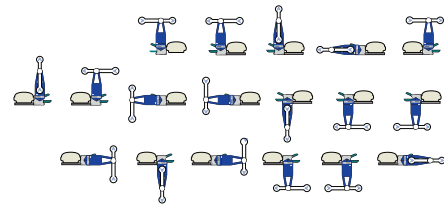


- Available Mounting Options**
- AIR21
 - AIR32
 - AIR1641
 - AIR5121
 - NOKIA FASB
 - RF Elements Horns
 - Cambium
 - Ubiquiti



SMART CONFIGURATION

– 18 antenna mounting positions for the most demanding spatial and RF conditions



SMART DESIGN

- Foldable GPS Antenna Alignment Tool
- Tool and Bracket fit into rugged carrying case
- Weighs only 8 pounds (Tool & Bracket)



Smart Aligner

by SmartWave Sensors

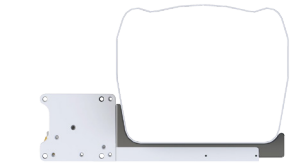
The Smart Aligner is the smallest and most powerful Antenna Alignment Tool on the market. Compact design, exceptional performance, multiple configurations and smart phone enabled makes it the smartest choice for aligning your antennas. The incorporated GPS technology and sophisticated sensors automatically calculate Azimuth, Tilt, Roll, Location and AGL of an antenna under the most demanding conditions.



Carrying Case



Extra tall pouch included



Custom insert designs available for nearly all antenna varieties.

SMART PHONE ENABLED

- Measure, verify and save alignment data using our free App
- Create and send PDF reports wirelessly from your mobile device
- Include up to ten photos for each antenna in the report
- Import and export site data directly to and from App
- Audible tone when alignment is achieved. Do not need to view the screen during alignment.

