

# I N S T R U C T I O N S

## Electronic Calibration (ECal) Kit Storage Box Keysight Part Number N4693-60042 or ECal Option 150

### Purpose

The purpose of this document is to instruct the user in customizing the foam insert in the ECal Kit Storage Box.

### Printing Copies of this Document

- To print extra copies of this document from the Web, download the PDF from the Keysight Web site:
- Go to <http://www.keysight.com/find/assist>
- Enter the document part number (N4693-90014) in the **Search** box.
- Click **Search**.
- Click on the hyperlink for the document.
- Click the printer icon located in the tool bar.

### Function of the ECal Kit Storage Box

The ECal Kit Storage Box is a container for securing your ECal module and accessories, such as a USB cable, wrenches and adaptors. Inside the box, these items remain safely placed within ESD-safe foam cutouts so they are protected from the work environment and are easy to find when an instrument calibration is needed.

The ECal Kit Storage Box is NOT designed for shipping. Please retain the original shipping container for shipping the ECal module and accessories back to Keysight for repair and calibration. If the shipping container is misplaced, contact Keysight for instructions. Assistance with test and measurement needs and information on finding a local Keysight office are available on the Web at <http://www.keysight.com/find/assist>

## Customizing the Foam Insert in the Storage Box

The foam insert in the storage box can be customized to fit four different ECal modules and various accessories by removing some of the foam pieces. Use the following tables and drawings to determine which pieces to remove from the foam insert for your ECal module and accessories.

**NOTE:** If foam pieces W, X, Y, or Z are removed, each has a small attachment point (indicated by circles in Figure 1) that must be cut.




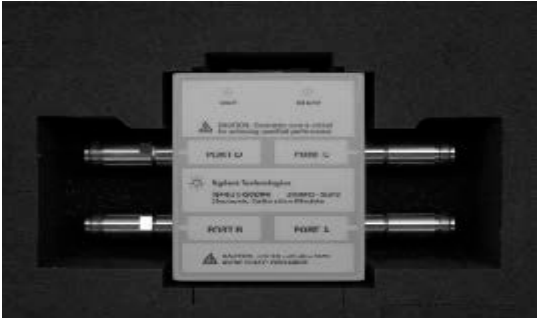
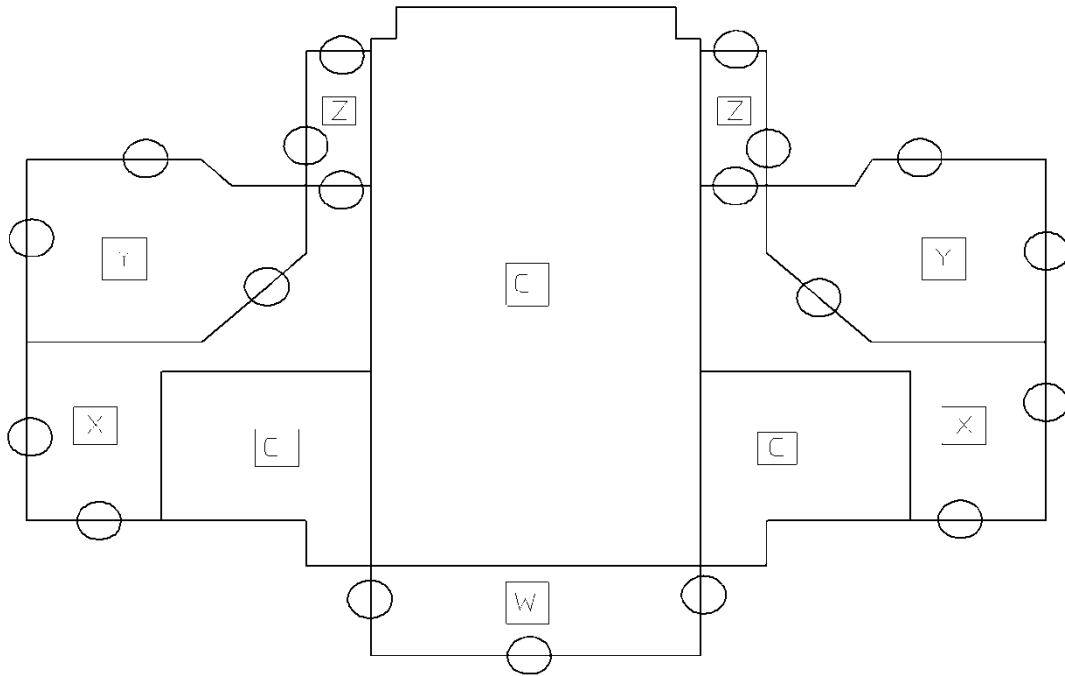
If your ECal module has this shape...	...remove these foam pieces (see Figure 1)
	<ul style="list-style-type: none"> <li>• C (3 locations)</li> </ul>
	<ul style="list-style-type: none"> <li>• C (3 locations)</li> <li>• W (1 location)</li> <li>• X (2 locations)</li> <li>• Y (2 locations)</li> </ul>
	<ul style="list-style-type: none"> <li>• C (3 locations)</li> <li>• X (2 locations)</li> <li>• Z (2 locations)</li> </ul>
	<ul style="list-style-type: none"> <li>• C (3 locations)</li> <li>• X (2 locations)</li> <li>• Y (2 locations)</li> <li>• Z (2 locations)</li> </ul>

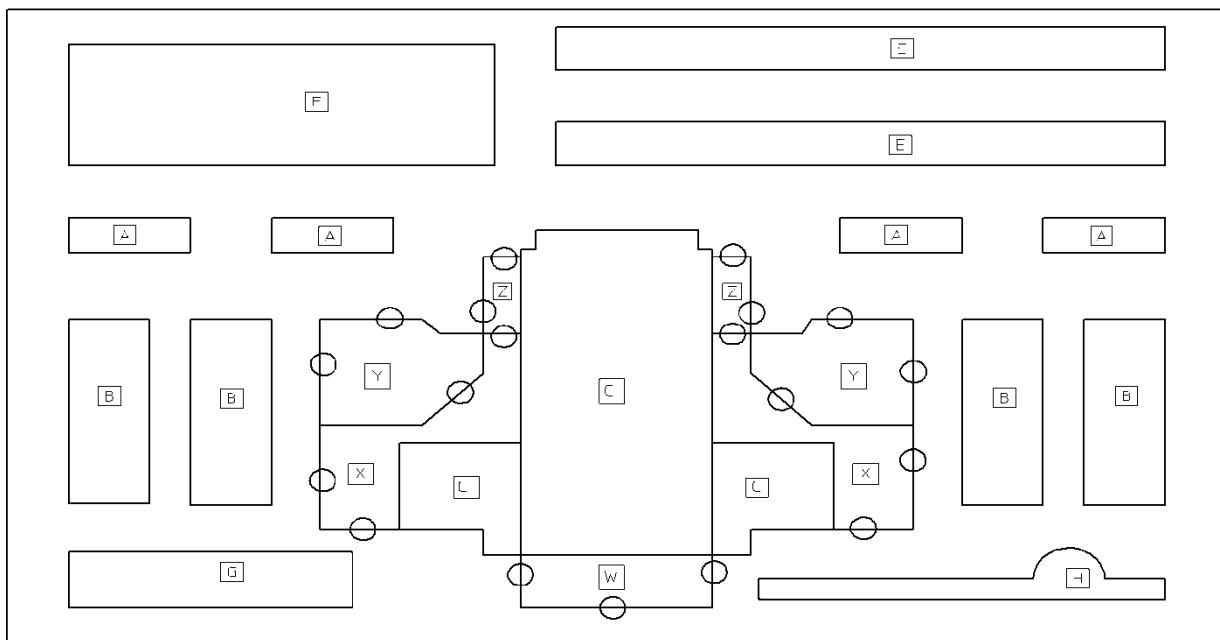
Figure 1



*Please continue with the instructions on the back of this page.*

If you have this accessory...	...remove these foam pieces (see Figure 2)
Small adaptor	A (4 locations)
Large adaptor	B (4 locations)
Torque wrench	E (2 locations) <i>Note that E has several pieces that allow for various wrench sizes.</i>
USB cable	F (1 location)
APC-7 Collet Extractor tool	G (1 location)
Small wrench	H (1 location)

Figure 2



**NOTE:** ECal Kit Storage Box labels are provided to help you identify the box contents and to prevent mixing items from other calibration kits. It is recommended that you affix the label onto the top cover of the box, just below the Keysight logo.

This page is intentionally left blank.



This information is subject to change without notice.  
© Keysight Technologies

**Print Date: January 23, 2015**

Supersedes: November 20, 2006

N4693-90014

[www.keysight.com](http://www.keysight.com)