

# Agilent Infiniium S-Series High-Definition Oscilloscopes



Data Sheet



The New Standard for Superior Measurements

*Anticipate* \_\_\_ *Accelerate* \_\_\_ *Achieve*



**Agilent Technologies**

# Welcome to the Next Generation of Oscilloscope Technology

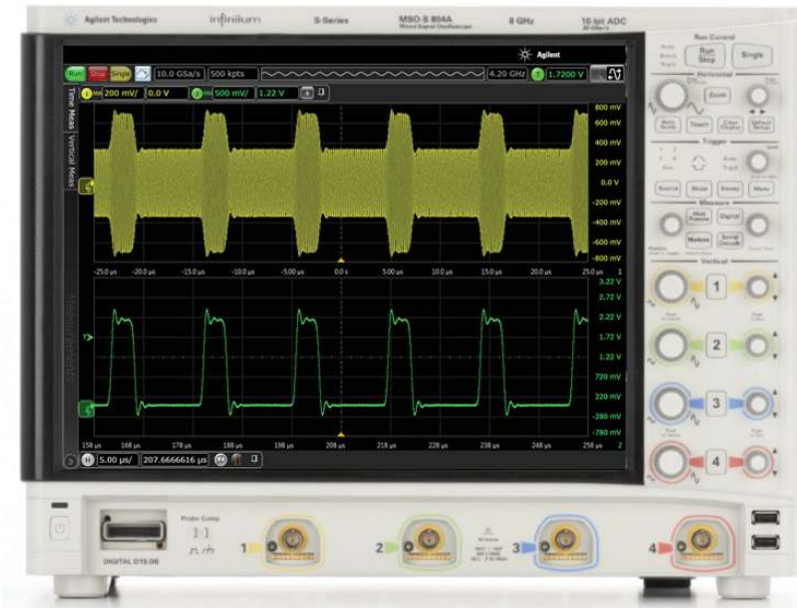
Infiniium S-Series oscilloscopes incorporate innovative technology designed to deliver superior measurements.

Our new 10-bit ADC and low-noise front-end technology work together to provide up to 8 GHz performance with the industry’s best signal integrity. We put these in an advanced frame with a solid state drive for fast boot-up, capacitive 15” display for easy touch capability, and a high-powered motherboard for fast processing. It’s all compatible with a myriad of Agilent probes and Infiniium applications.

*There is no better way to experience that superiority of the Infiniium S-Series oscilloscopes than to use one.*

*Contact Agilent today to request a demo.*

*Or visit, [www.agilent.com/find/S-Series](http://www.agilent.com/find/S-Series)*



The Infiniium S-Series offers bandwidths from 500 MHz up to 8 GHz. Each model, equipped with a large 15” XGA capacitive touch screen, comes in a quiet package that is just 9” (23 cm) deep.

Scope channels						
DSO models 4 scope channels	MSO models 4 scope channels + 16 digital channels	Analog bandwidth	Max sample rate	ADC bits	Standard memory depth	User-installed bandwidth upgrades
DSOS054A	MSOS054A	500 MHz	20 GSa/s (2 channels) 10 GSa/s (4 channels)	10	100 Mpts (2 channels) 50 Mpts (4 channels)	Yes
DSOS104A	MSOS104A	1 GHz				
DSOS204A	MSOS204A	2 GHz				
DSOS254A	MSOS254A	2.5 GHz				
DSOS404A	MSOS404A	4 GHz				
DSOS604A	MSOS604A	6 GHz*				
DSOS804A	MSOS804A	8 GHz*				

\* 6 GHz and 8 GHz bandwidth supported in 2-channel mode. If all four channels are on, a maximum bandwidth of 4 GHz is supported.

# The New Standard for Superior Measurements

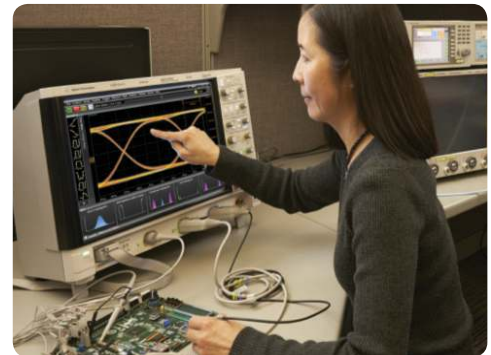
## Industry's best signal integrity

- 10-bit ADC up to 8 GHz for additional vertical resolution
- Low-noise front end for precision signal viewing
  - Only 90  $\mu\text{V}$  noise at 1 mV/div and 1 GHz bandwidth
  - System ENOB values in excess of 8
  - SFDR values down to  $-73$  dBC
  - 2 mV/div vertical scaling supported in hardware
- Correction filters ensure flat frequency magnitude and phase response
- Low intrinsic jitter (100 fs (typical) for excellent jitter characterization)
- Precision BNCs with  $> 8$  GHz bandwidth



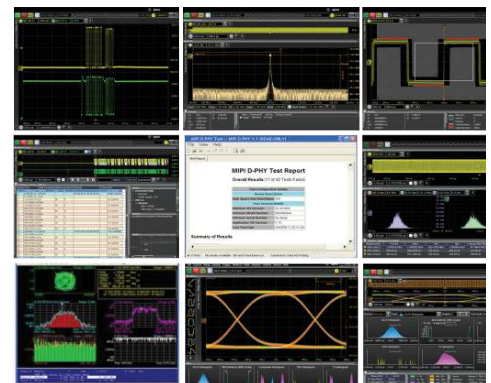
## Most advanced platform

- Powerful, flexible Infiniium user interface
- Capacitive touch screen with multi-touch, handles, and re-sizing touch fields
- Powerful Intel i5 motherboard with 8 GB RAM for fast processing
- Removable solid state drive (SSD) for fast boot-up and increased reliability and security
- Fast data offload (up to 200 MB/s)



## Broadest range of capability

- 16 digital channels on MSO models
- Standard feature rich software with  $> 50$  automated measurements, 16 math functions, gating, and spectral viewer
- Expandable with optional software applications and flexible licensing:
  - Add protocol decode and triggering for a wide variety of serial buses
  - Choose from a large selection of analysis applications including SDA, jitter, InfiniiScan, and de-embedding
  - Test to ensure adherence to industry standards with compliance apps
- Support for  $> 100$  probes – current and voltage, active and passive, 1 M $\Omega$  and 50  $\Omega$  inputs



# Industry's Best Signal Integrity

## S-Series next-generation technology blocks enable superior measurements

The heart of the oscilloscope is a 20-layer acquisition board with 16 custom ASICs and FPGAs. New technology blocks deliver superior signal integrity. You'll get superior measurements that you won't get with any other portable scope on the market.

### 10-bit ADC

Each model incorporates the industry's fastest 10-bit ADC with a sample rate of 40 GSa/s. This yields 2 channels at 20 GSa/s or 4 channels at 10 GSa/s.

- 4X more vertical resolution than 8-bit oscilloscopes
- ADC ENOB up to 8.7 contributes to high system ENOB values
- Up to 12 bits of resolution with high-res mode
- SNR are better than historical 8-bit ADC architectures
- Vertical scaling as low as 2 mV/div supported in hardware



### Agilent's new 10-bit ADC

- 65 nm CMOS (9 mm x 14 mm)
- 130 nm BiCMOS buffer IC
- Custom 33 mm BGA package

---

### Superior low-noise front end

- 10-bit ADC's usefulness is dependent on the low-noise front end that supports the additional quantization levels. Each S-Series oscilloscope incorporates the industry's lowest noise front end for portable oscilloscopes with bandwidth up to 8 GHz
- 50 Ohm and 1 MΩ input support, each path with bandwidth limit filter support
- Analog and DSP bandwidth limit filters to reduce unwanted noise filters
- 90 uV noise at 1 GHz bandwidth allows viewing of small signal detail
- 2mV/div vertical scaling in hardware (in combination with ADC)
- Gold-plated precision BNCs rated in excess of 8 GHz bandwidth
- Electronic attenuators for decreased noise and increased reliability
- Lower bandwidth models are upgradable to any higher bandwidth model with a 1-minute user-installed software license



*S-Series front-end includes three new custom ICs including a 130 nm BiCMOS IC that incorporates user-selectable analog filters and bandwidth upgrades via a software license.*

# Industry's Best Signal Integrity

S-Series next-generation technology blocks enable superior measurements

## Superior time base

Time scale accuracy is critical, especially for deep-memory applications.

Measurement of jitter is necessary for ensuring high-speed system reliability. Intrinsic jitter associated with an oscilloscope includes the jitter measurement internal to the scope. The lower the value, the better you'll be able to characterize your device. S-Series scopes achieve precise time accuracy with a next-generation time base architecture.

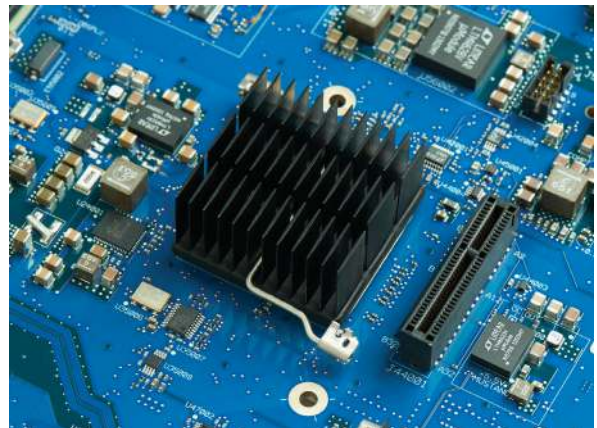
- Time scale accuracy of 100 parts per billion for accurate deep-memory measurements
- Low jitter measurement floor with 100 fs (typical) of intrinsic jitter



## Signal processing in hardware

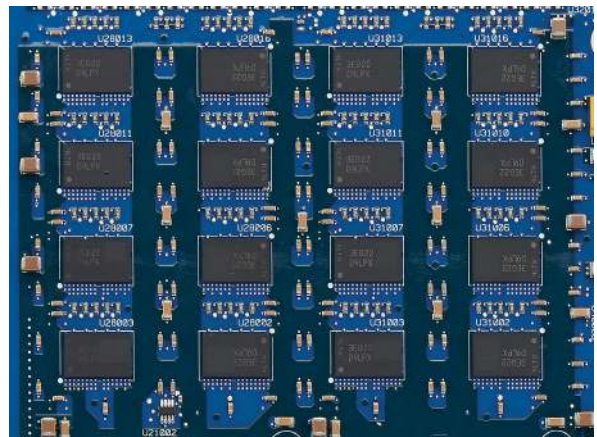
S-Series oscilloscopes are built with an advanced FPGA dedicated for fast and precise signal processing. The technology produces the fastest deep memory responsiveness in the industry and provides additional hardware filtering for superior measurements.

- Hardware-based algorithms for accelerated drawing to display (pixel placement) enable fast pan and zoom even with deep memory
- Frequency-response correction filters produce flat responses for both magnitude and phase for more accurate waveforms
- User-selectable hardware bandwidth-limiting filters from 500 MHz up to the oscilloscope's bandwidth reduce unwanted noise
- Supports cabled 2-channel differential inputs (channels 1-3 or channels 2-4) without requiring a differential probe
- The DSP technology block supports rapid optional de-embedding technologies such as InfiniiSim, Precision Probe, and equalization



## Responsive deep memory

S-Series oscilloscopes come with the industry's most responsive deep memory. With standard 50 Mpts/channel on all four channels simultaneously, capture long time periods while retaining fast sample rates. Fast update rates mean your oscilloscope will stay responsive with deep memory on to ensure precise representation of analog signals.



# Most Advanced Platform

S-Series next-generation technology enables superior measurements

S-Series platform standard features

## 250 GB removable SSD

- Fast boot up
- Increased reliability
- Easy to remove for secure environments

## Powerful motherboard

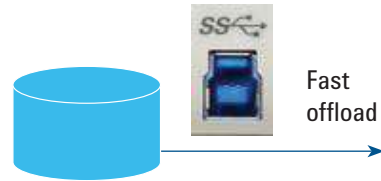
- 3 GHz Intel i5 quad core processor with 8 GB RAM for fast computations — even with advanced math and deep memory
- IO
  - Ethernet 10/100/1000bT
  - 6 USB device ports (2 in front, 4 on side)
  - DisplayPort and VGA video out. Drivers support up to two simultaneous displays



## Fast data offload

Have an application that requires programmatically accessing oscilloscope data?

- USB 3.0 for up to 200 MB/s offload
- 1000bT Ethernet for up to 80 MB/s offload

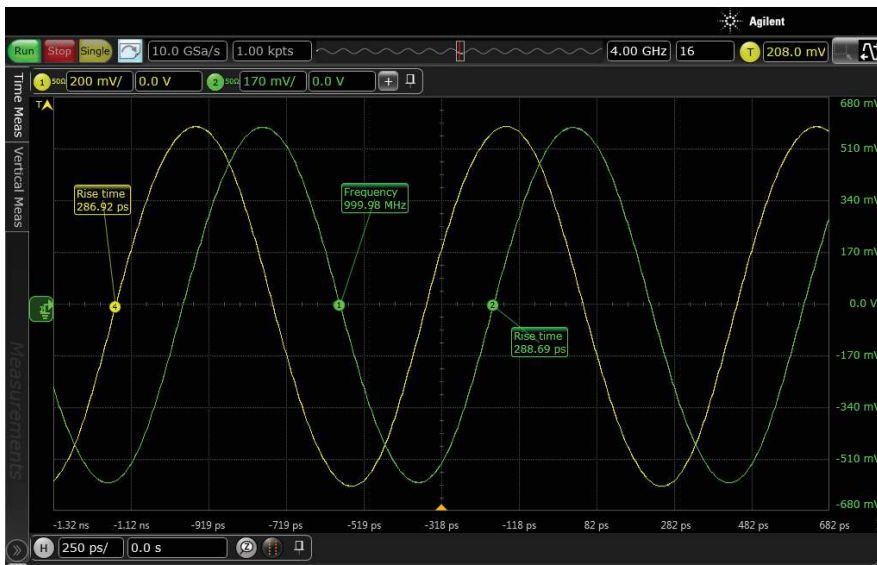


## Touch-screen innovation

S-Series oscilloscopes incorporate a capacitive touch screen. In addition, Infiniium software includes a large number of touch-friendly enhancements including handles, enlarged touch fields when touch is enabled, and gestures (multi-touch).

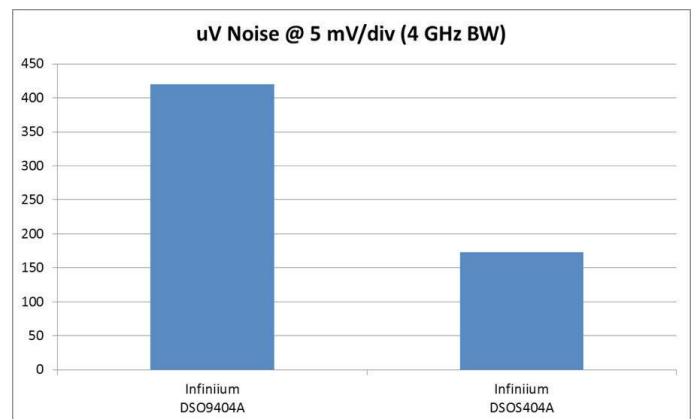


# Oscilloscope Overview



With up to 8 GHz bandwidth, 20 GSa/s sample rate, a 10-bit ADC, and a low-noise front-end, see a precise representation of the analog characteristics of the signals you're testing.

Noise directly impacts vertical placement of each signal point. Oscilloscopes with lower noise have more accurate vertical placement. S-Series oscilloscopes incorporate next-generation technology to deliver the lowest noise measurements in the industry. Here's a compare at 4 GHz with 5 mV/div scaling.



Superior signal integrity allows for more accurate measurements such as rise time values. Extremely low intrinsic jitter (100 fs) ensures the lowest possible contribution to jitter measurements from the scope itself so you're using your jitter budget on your design.



# Oscilloscope Overview – Time Domain

## Display windows and scale annotations

Both horizontal and vertical axis values are annotated on the scales, leading to fast interpretation. Infiniium oscilloscopes uniquely offer 4 grids per waveform area, with up to 8 waveform areas.



## Results window

See up to 20 measurement results simultaneously with statistics. Each result is color-coded to the source. Turn on measurement annotations for additional documentation capability.



## Math and measurements

With > 50 standard automated measurements with statistics and 16 independent math functions, you'll be able to analyze a wide variety of tests. Use any of the industry-best 16 independent gates to narrow measurements or math to a specific time window.





# Oscilloscope Overview - Frequency Domain

With a built-in spectral viewer, controls, gated FFTs, 10-bit ADCs, and excellent SFDR values, the S-Series oscilloscopes provide an excellent scope platform for FFT measurements.

## Spectral viewer and FFTs

Need to see frequency domain in addition to time domain? The standard spectral viewer includes FFT controls like start/stop and CF/span. Readout includes power and frequency axis annotation and a peak table.



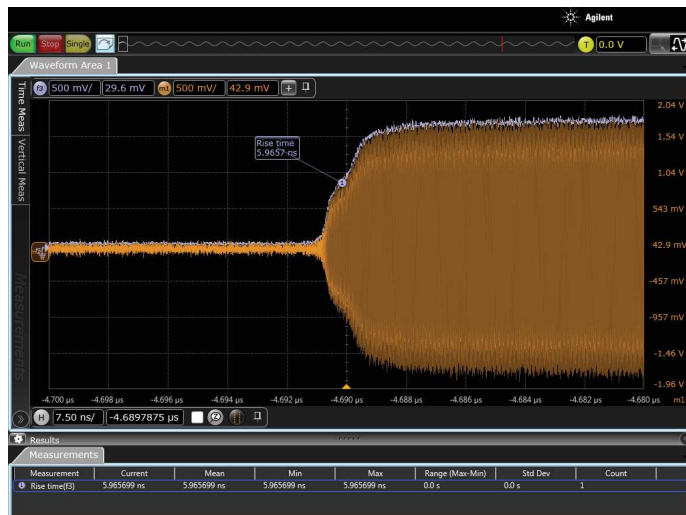
## Gated FFTs

Infiniium supports gated math and analysis including FFTs. Use any of the standard 16 independent gates to narrow FFT computations to a specific time window. Drag the gate in the time domain, and see time correlated FFT measurements for specified time periods. The example at the right shows two simultaneously FFTs.



## Envelope measurements

Need to see the rise time of a burst? Add a rise time measurement to an envelope function that provides an AM demodulation of a burst.

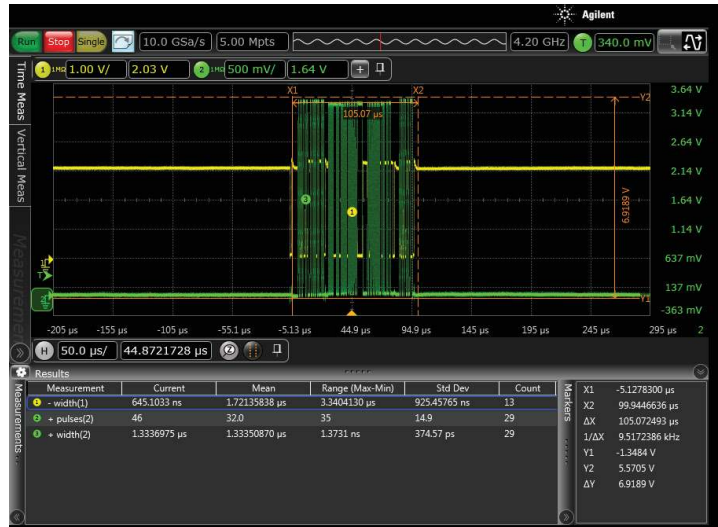


# Oscilloscope Overview - User Interface

Infiniium oscilloscopes have been consistently recognized for high usability. The next-generation Infiniium user interface that ships standard on S-Series oscilloscopes delivers even more capability.

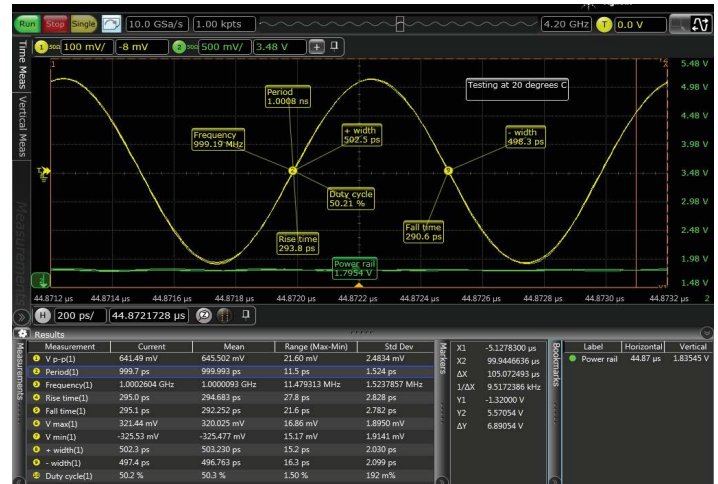
## Personalized viewing

- Determine how much space to give to results versus waveforms using sliders
- Undock and move a window to an external monitor using the tabbed layout
- Easily scale and see independent waveforms with user-selectable 1, 2, or 4 simultaneous grids in each waveform area



## Faster and better documentation

- Quickly determine horizontal and vertical values as they are prominently displayed
- Add annotations using bookmarks, measurement callouts, and dynamic delta marker readouts
- Right-click to copy image without ever having to save to a file
- Use the multi-purpose button to save screen images easily with auto-incrementing file names
- Quickly save all waveforms, memories, functions, and setups in a single .osc file for later recall on an oscilloscope or PC
- Save screen images as .jpg, .png, .gif, or .tiff



## Best usability, including touch screen

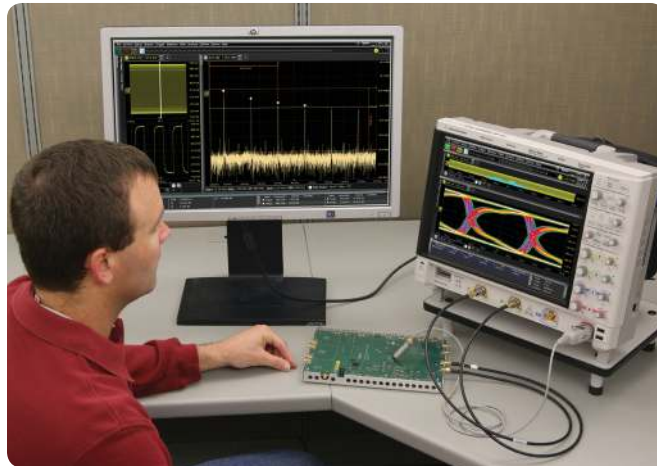
Extensive research testing led to several touch-screen innovations not found in other oscilloscopes. All the following are industry firsts.

- Click once to see handles that enable touch manipulation of markers, trigger level, and waveform-tasks that previously required a mouse
- Multi-touch support for multi-touch (gestures) such as zooming and panning
- Auto-sizing when touch button is turned on/off optimizes fields for fingers or a mouse



# Using an External Monitor

Undock and move a window to an external monitor using tabbed layout.



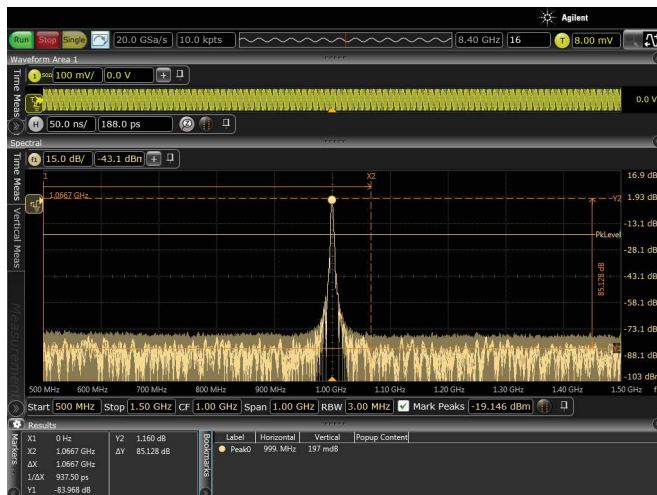
# Infiniium Offline Application



View and analyze results at your desk. Save your oscilloscope file, then view and analyze on your PC without needing additional access to your scope.



Use waveform math, filtering, and FFT spectral analysis and to get more insight. Need to see protocol decode, analyze jitter, or view eye diagrams? Infiniium Offline helps you get insight into all of these areas.



# MSO Overview

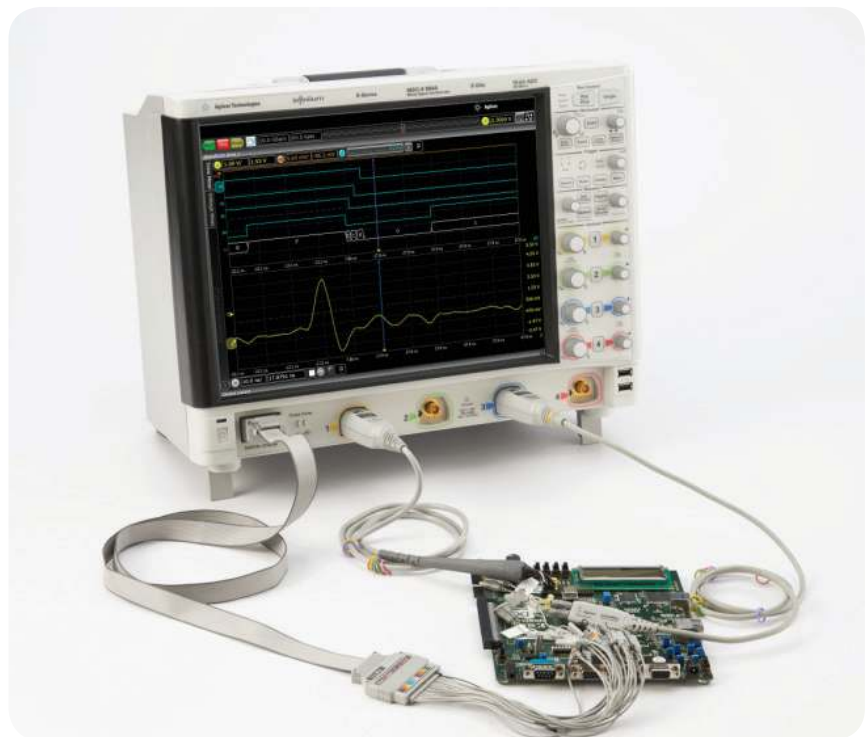
MSO models add 16 high-speed timing channels with standard 128 Mpts digital memory, allowing you to retain fast 2 GSa/s sample rates over long periods of time. All DSOs are user-upgradable to MSOs. The required upgrade time is less than 5 minutes.



Use the digital channels to evaluate control signal relationships and data buses up to 16 bits wide. Use symbols to quickly interpret waveforms.

## MSO measurement applications

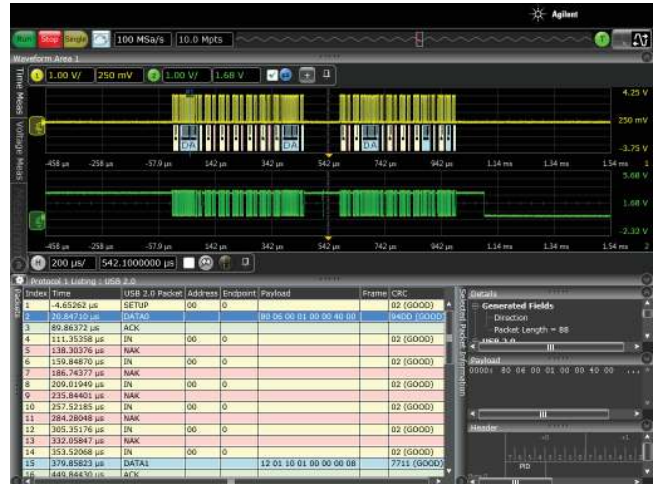
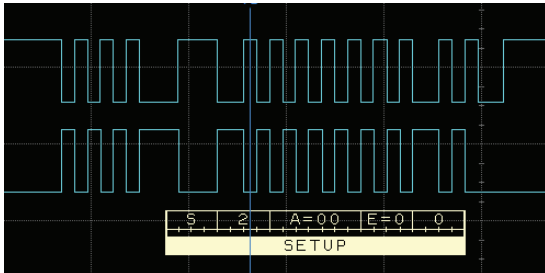
- Trigger on and view specific control or data flow events
- Use digital channels for protocol trigger and decode (I<sup>2</sup>C, SPI, RS-232, JTAG, USB and more)
- Capture data from FPGA debug ports
- Trigger on and monitor power rail sequencing timing relationships
- Combine with oscilloscope channels to trigger across up to 20 channels simultaneously



# Protocol Applications

Does your design include a serial bus that is a key point for debug or test? Use one of Agilent’s protocol decoding and triggering application packages for increased productivity. The software converts DSO or MSO physical layer acquisitions into packets for specific protocols. Specify trigger conditions at the packet level.

Quickly move between physical and protocol layer information using the time-correlated tracking marker. Display protocol content in waveforms and and/or listing.



Optional application description	License type	
	User-installed on new or existing scope	Server-based license (N5435A option)
<b>Protocol</b>		
8B/10B	N5384A	003
CAN, LIN, FlexRay protocol decode and trigger	N8803B	033
I <sup>2</sup> C, SPI, and RS-232/UART protocol decode and trigger	N8800B	n/a
I <sup>2</sup> C/SPI protocol decode	N5391B	006
JTAG protocol decode	N8817A	038
MIPI CSI-3 (M-PHY) protocol decode	N8820A	n/a
MIPI D-PHY protocol decode	N8802A	036
MIPI DigRF v4	N8807A	047
MIPI LLI protocol decode	N8809A	049
MIPI RFFE protocol decode	N8824A	072
MIPI UniPro protocol decode	N8808A	048
PCIe Gen1 and Gen2 protocol decode and trigger	N5463A	032
RS-232/UART protocol decode and trigger	N5462B	001
SATA/SAS protocol decode	N8801A	035
SVID protocol decode	N8812A	054
USB 2.0 protocol decode and trigger	N5464B	035
USB 3.0 protocol decode	N8805A	n/a
USB 3.0 SuperSpeed Inter-Chip (SSIC) protocol decode	N8819A	n/a

# Analysis Applications

A variety of analysis capabilities enable additional rapid insight

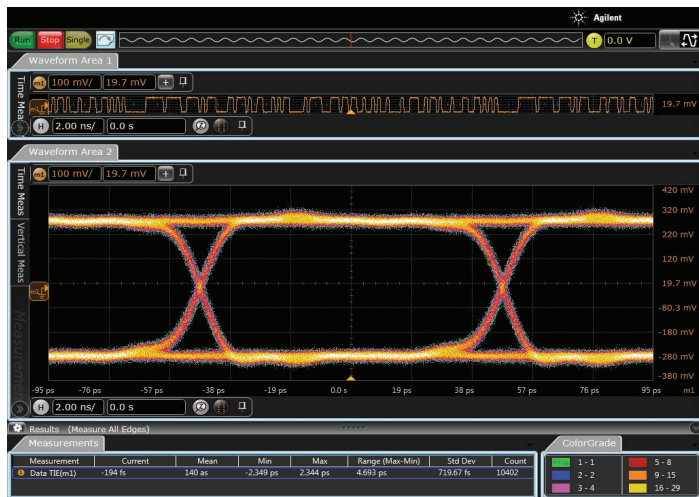
## InfiniiScan

Rapidly trigger on complex events that you can see but are impossible to specify using hardware triggers. This innovative software quickly scans through thousands of acquired waveform cycles and isolated anomalous signal behavior. Select up to eight zones across channels are available.



## SDA (Serial Data Analysis)

Quickly validate signal integrity for high-speed serial interfaces with embedded clocks. Recover embedded clocks, and build and validate eye diagrams. SDA also includes software-base trigger and decode for 8B/10B data.



## EZJIT, EZJIT Plus, and EZJIT Complete

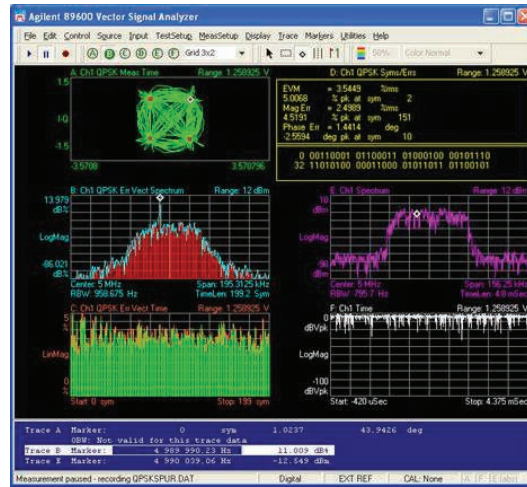
Characterize and evaluate most commonly needed jitter measurements. EZJIT Plus automates Rj/Dj separation, and EZJIT Complete additionally characterizes vertical noise.



# Other Popular Analysis Applications

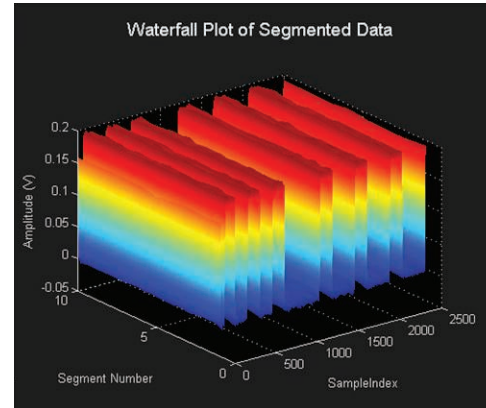
## VSA

Expand your oscilloscope with the 89601B vector signal analysis software. This application takes data from the scope and provides spectrum analysis and digital modulation analysis for wireless communication.



## MATLAB integration with UDF

Install MATLAB on your oscilloscope, and add your favorite .m scripts as function operators. Export and analyze oscilloscope data directly with MATLAB. The FFT waterfall spectrogram on the right is an example of processing that can be done in MATLAB. Order Option N6174A for MATLAB Basic or Option N6175A for MATLAB Advanced.



Optional application description	License type	
	User-installed on new or existing scope	Server-based license (N5435A option)
<b>Analysis</b>		
DSA (EZJIT Complete and SDA bundle)	N8823A and N5384A	003 and 055
Equalization emulation	N5461A	025
EZJIT	E2681A	002
EZJIT Plus	N5400A	001
EZJIT Complete vertical noise analysis	N8823A	055
FPGA dynamic probe for Xilinx FPGAs	N5397A	n/a
InfiniiScan	N5415B	004
InfiniiSim basic	N5465A-002	026
InfiniiSim advanced	N5465A-001	022
Matlab basic	N6174A	n/a
Matlab advanced	N6175A	n/a
OSA (Oscilloscope Signal Analyzer)	W2650A	n/a
Power	U1882A	n/a
PrecisionProbe	N2808A	044
Serial Data Analysis	N5384A	003
UDF (user-defined function for MATLAB integration)	N5430A	005

# Infiniium S-Series Standard Features

**15" XGA display** makes it easier to view analog and digital signals as well as spectral and protocol views

**Capacitive display** makes for responsive touch control and supports multi-touch gestures

**View:** Up to 8 waveforms areas. Each area can have up to 4 grids

**Drag and drop** enables rapid measurements

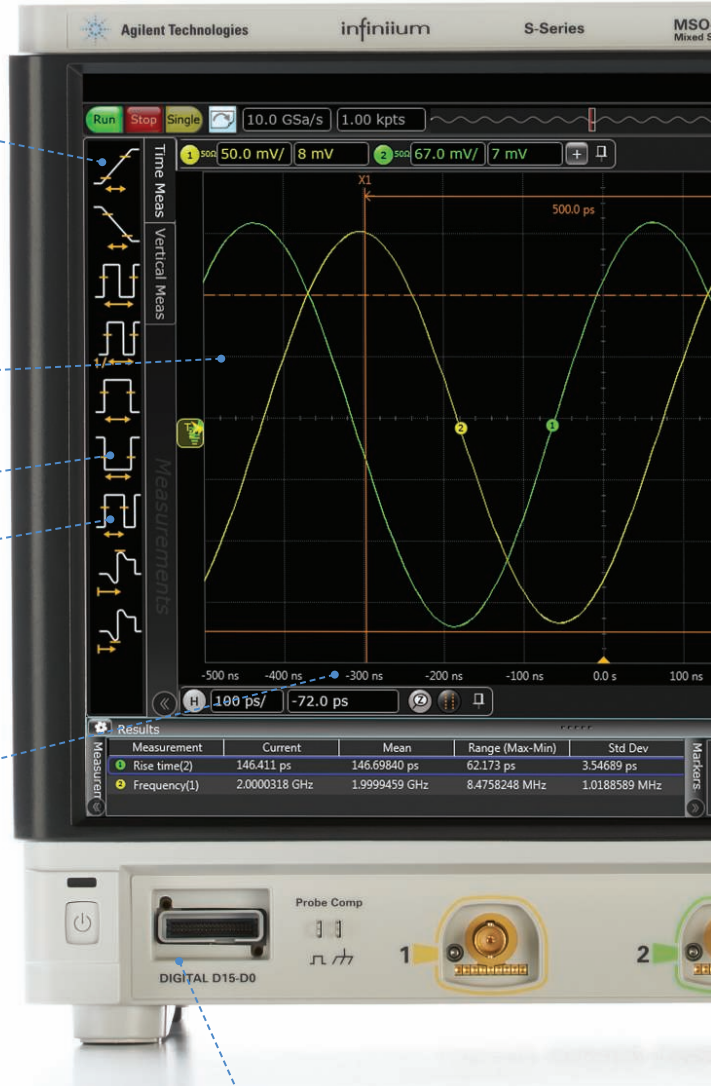
### Measurements

Over 50 automated measurements  
View up to 20 simultaneously  
User-customizable result window (size, position, and information)  
X and Y markers with dynamic delta values

### Analyze

20 math operators including FFT and filters  
Up to 16 independent/cascaded math functions

**View windows:** Analog, math, spectral, and measurement results (simultaneous, tabbed, or undocked)



**Built-in 10-MHz reference in/out ports** synchronizes multiple measurement instruments in a system

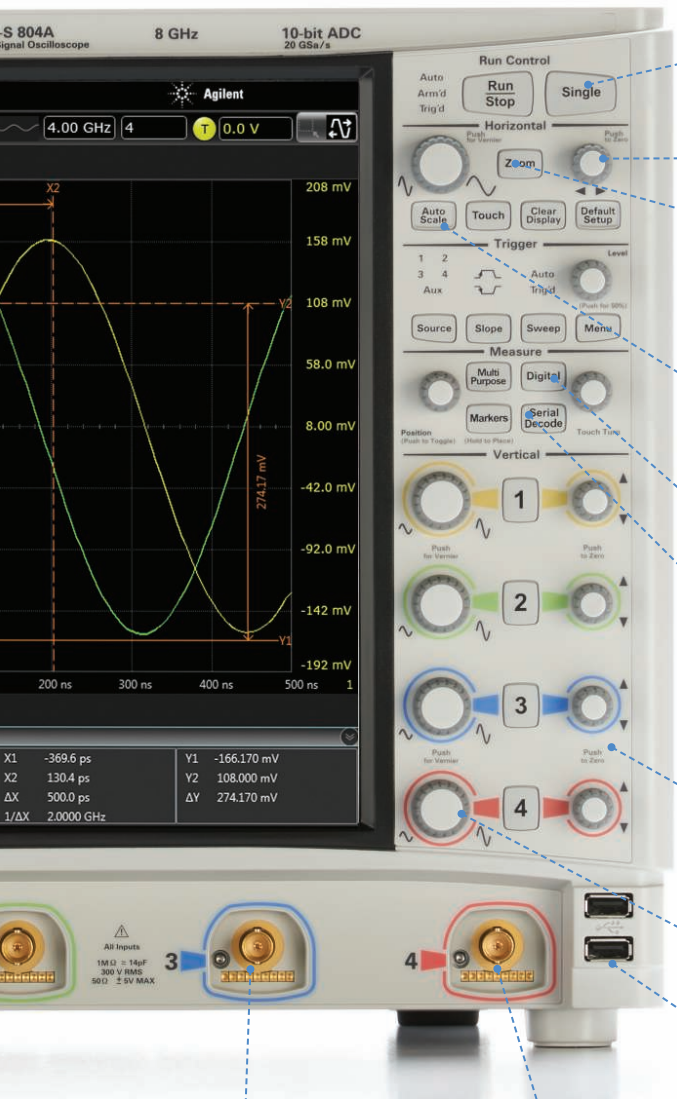
**XGA and DisplayPort video output ports** let you add an external monitor

**Standard USB 2.0 and 3.0 and LAN ports** provide fast data offload, device support, and connectivity

**Trig in/out ports** provide an easy way to synchronize your oscilloscope to other instruments

**Mixed-signal oscilloscope (MSO) models** seamlessly integrate four analog scope channels with 16 digital channels





Dedicated single acquisition button provides better control to capture a unique event

Pressing horizontal delay knob sets the delay to zero

Zoom button provides quick access to two screen-zoom modes

Responsive deep memory allows you to pan and zoom quickly

Autoscale lets you rapidly display any analog or digital active signals, automatically setting the vertical, horizontal and trigger controls for the best display, while optimizing memory

Digital channel button provides quick setup access

Protocol decode button enables quick setup access

Dedicated per-channel front panel controls make it easy to access the vertical and horizontal scaling and offset

Quick access to fine/course control by pressing the horizontal and vertical sensitivity knobs

Built-in USB ports makes it easy to save your work and update your system software quickly.

Gold-plated precision BNCs deliver > 8 GHz bandwidth through the connector

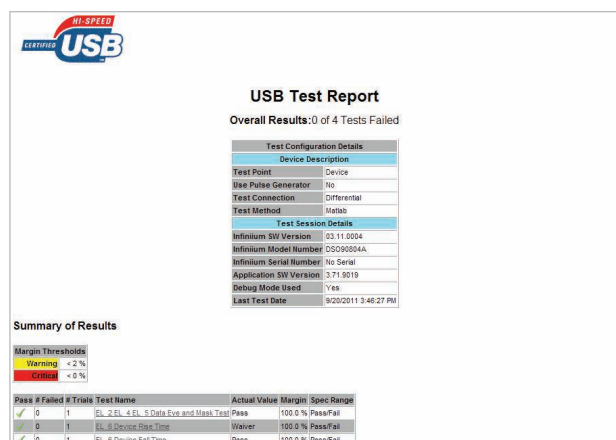
AutoProbe interface automatically configures the attenuation ratio of the probe and provides probe power for Agilent's active probes.



# Compliance Applications

Need to test adherence to an industry-standard serial bus?

The S-Series supports many compliance applications.



Optional application description	License type		Minimum required bandwidth (GHz)
	User-installed on new or existing scope	Server-based license (N5435A option)	
BroadR-Reach	N6467A	062	1
DDR bundle - includes DDR1, 2, and 3	N5459A-001	n/a	
DDR1 (200 - 1067 MT/s)	U7233A	021	1 - 4
DDR2 + LPDDR2 (400 - 1067 MT/s)	N5413B	037	2 - 4
DDR3 + LPDDR3 (800 - 1067 MT/s)	U7231B	053	4
eMMC	N6465A	061	1
Ethernet	N5392B-003	008	1
Ethernet + EEE	N5392B-002	060	1
10GBase-T	U7236A	023	2.5
HDMI 1.4	N5399C-3NL	011	8
MHL 2.0	N6460A	050	8
MIPI D-PHY	U7238B-1FP	022	4
MIPI M-PHY	U7249B-1FP	043	6
MOST	N6466A	068	1.5
PCIe Gen 1	N5383C	040	6
UDA	N5467A	058	1
UHS-I	N7246A	n/a	1
UHS-II	N6461A	052	6
USB 2.0	N5416A	017	2.5
HSIC	U7248C	042	2.5
XAUI	N5431A	018	6

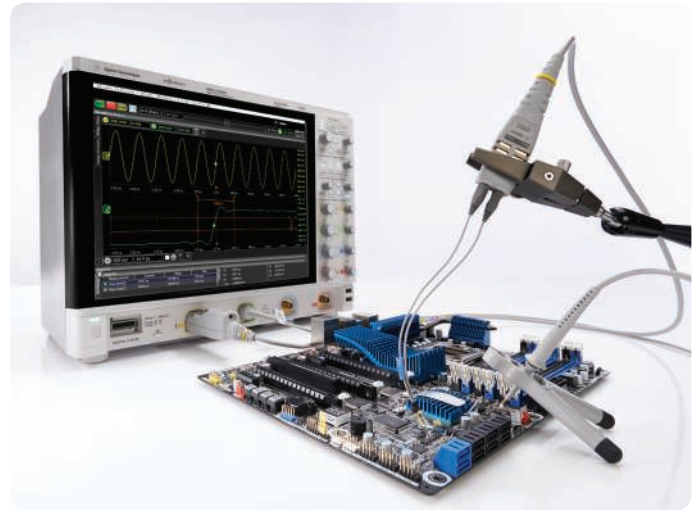
Need to additionally test even higher-speed serial buses?

Consider Agilent's Z-Series, 90000A Series, or 90000 X-Series.

## Probes Overview

S-Series oscilloscopes include both 1M $\Omega$  and 50 $\Omega$  paths. This expands their flexibility by making them compatible with a wider range of probes than high-performance oscilloscopes that only support a 50 $\Omega$  path.

All S-Series oscilloscopes ship standard with four passive probes and support a wide range of about 100 compatible current and voltage probes. The table below highlights probes commonly used with the S-Series.



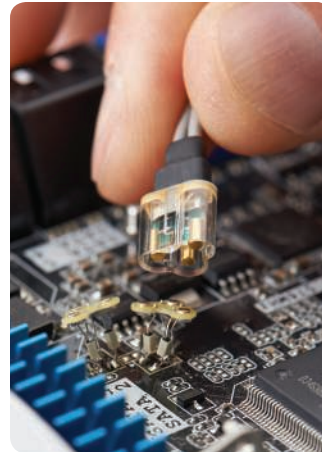
Probe type	Ideal for measuring	Recommended probe model numbers
Passive probe	Single-ended voltage up to 500 MHz	N2873A (qty. 4 ship standard)
InfiniiMax active probe	Single-ended or differential voltage	N2830A/31A/32A, 1130A/31A/32A/34A
InfiniiMode active probe	Single-ended, differential, or common mode voltage	N2750A-52A
Single-ended active probe	Single-ended voltage up to 2 GHz	N2795A, N2796A, N2797A (extreme temperature)
General purpose differential probes	High voltage differential signal up to 7 kV with high CMRR	N2790A, N2791A, N2818A, N2819A, N2891A
Current probe	High current, AC/DC (mA – 100's of A)	1146B, 1147B, N2780B-83B, N2893A
	High sensitivity current, AC/DC (10's of $\mu$ A – A)	N2820A, N2821A
Passive probes	High voltage up to 30 kV peak pulse	10076B, N2771B
	General purpose up to 1.5 GHz	N2870A – N2876A

# Probes and Accessories Overview

## N2830A Series InfiniiMax III+ active probes

The N2830A Series is the newest generation of the InfiniiMax probing system, offering InfiniiMode technology up to 12 GHz. Switch between differential, single-ended and, common mode without adjusting probe tip connections.

InfiniiMax III+ provides accurate probe correction (DC and AC) for high fidelity and accuracy. Along with the InfiniiMax III+, use the QuickTip probe head accessory, the industry's first magnetically-engaged probe head and tip, for a quick and secure connection.

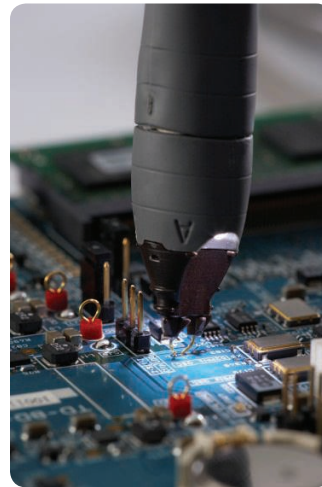


---

## N2750A Series InfiniiMode active probes

These active probes offer 1.5/3.5/6 GHz bandwidth and InfiniiMode operation modes and provide convenient and quick access to various functions on the oscilloscope.

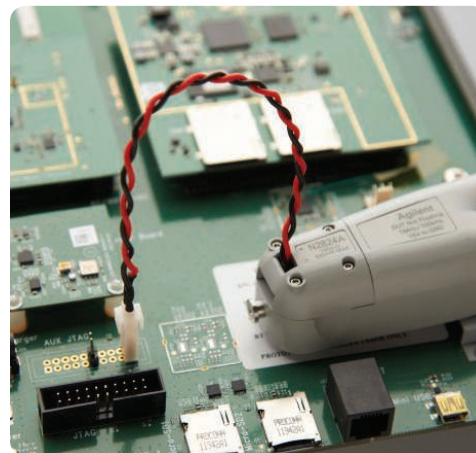
With wide dynamic range (10 Vpp at 10:1) and offset range ( $\pm 15$  V), these probes can be used for a vast variety of measurements.



---

## N2820A Series high-sensitivity current probes

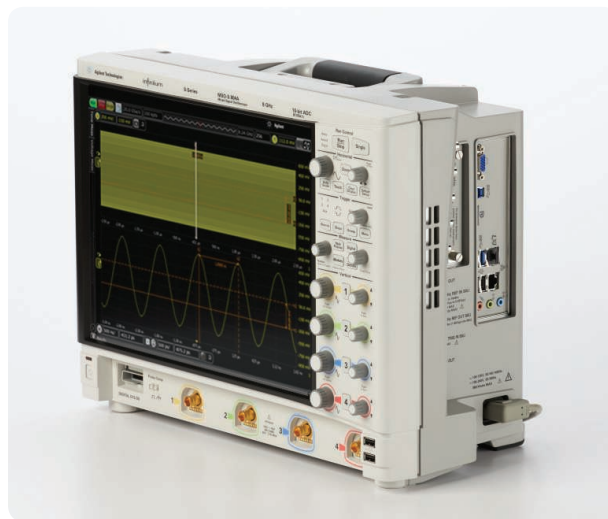
Need to measure small currents? The N2820A Series high-sensitivity current probes can measure down to 50  $\mu$ A and up to 5 amps. Combine with the S-Series for lower noise and 10-bit ADC high-definition current measurements.



# Agilent Portfolio Compare



	InfiniiVision	Infiniium		
Family	6000 X-Series	9000 Series	S-Series	90000A Series
Optimized for	Fastest update rate and lowest price up to 6 GHz	Measurements up to 4 GHz	Superior signal integrity up to 8 GHz	Superior signal integrity up to 13 GHz
Available bandwidths	500 MHz to 6 GHz	600 MHz to 4 GHz	500 MHz to 8 GHz	2.5 GHz to 13 GHz
Standard memory depth/ch (2-ch)	4 Mpts	40 Mpts	100 Mpts	40 Mpts
ADC bits	8	8	10	8
Bandwidth filters	Yes	20 MHz (only on 1 M $\Omega$ input)	Yes. Extensive	Yes. Extensive
Bandwidth correction filters	No	No	Yes	Yes
Probe inputs	50 $\Omega$ and 1 M $\Omega$	50 $\Omega$ and 1 M $\Omega$	50 $\Omega$ and 1 M $\Omega$	50 $\Omega$
Motherboard and OS	None. Embedded	Intel Core 2 Duo. Win7	Intel i5 Quad-Core. Win7	Intel Core 2 Duo. Win7
Standard internal drive	None	HDD	Removable SSD	HDD
BNC inputs	Traditional	Traditional	Precision BNC	Precision BNC
MSO models	Yes	Yes	Yes	No
Frame volume comparison	1/2 X	X	X	2X



*Infiniium S-Series blends high-performance oscilloscope capability with a wide range general-purpose features.*

## Accessories

### Quickly remove your solid state drive for additional security.

All S-Series models ship standard with a solid state drive. This gives you faster boot time, enhanced reliability, and the ability to quickly remove the solid state drive for safekeeping in secure environments. Need additional solid state drives for secure environments? N2746S provides an additional solid state drive with Windows 7.



### Need to ship your oscilloscope or take it on an airplane?

Cruzer has created a custom case for Agilent's Infiniium S-Series oscilloscopes. Order the rugged hard-shell transit case directly from Cruzer ([www.cruzer.com](http://www.cruzer.com)) using the product number 3F1312-0411J. Shipping weight with an S-Series frame and no accessories is 51.5 lbs (23.4 kg).



### Rack mount your oscilloscope.

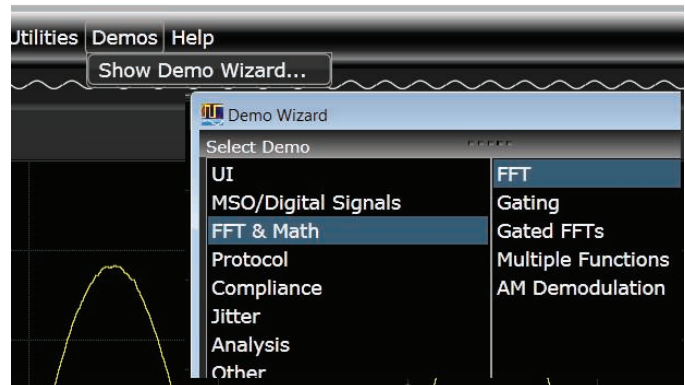
Mount your S-Series oscilloscope in an 8U high, 19" (487 mm) wide rack with the N2902B rack mount kit. The sturdy kit provides additional BNCs on the rack mount front panel for BNC in/out signals on the side of S-Series models.



# Take a Quick Look Using Demo Wizard and USB Demo Board

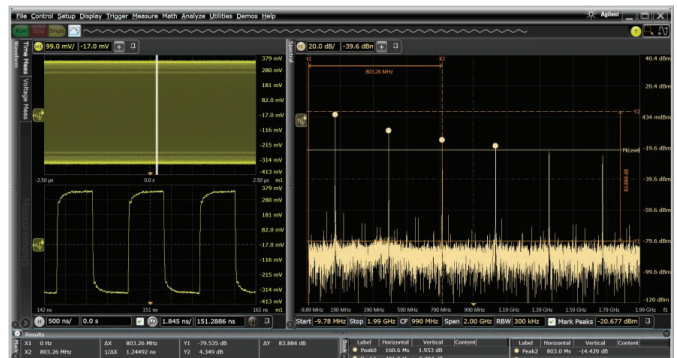
## Evaluate using demo wizard waveforms

We've captured a variety of signals and measurements to speed your evaluation of S-Series oscilloscopes. Use the demo wizard to quickly evaluate the scope's capability without needing to create an array of live signals.



## Measurement examples

For example, pull up an FFT and note the following: separate spectral viewer with annotated axis scales; dynamically updated X and Y marker delta values; a customizable results window that includes an FFT peak table.



## N2867A USB demo board

Plug a mouse, USB drive, or any other device in one side and connect the other to your oscilloscope USB port. You now have easy access to a target for quick evaluation or training others on how to use the scope.

The board routes out D+, D-, 5 V, and ground, so you can use it to make voltage, current, power, or other measurements.



# Investment Protection

Expand your oscilloscope's capability with additional memory, bandwidth, digital channels, or software applications.

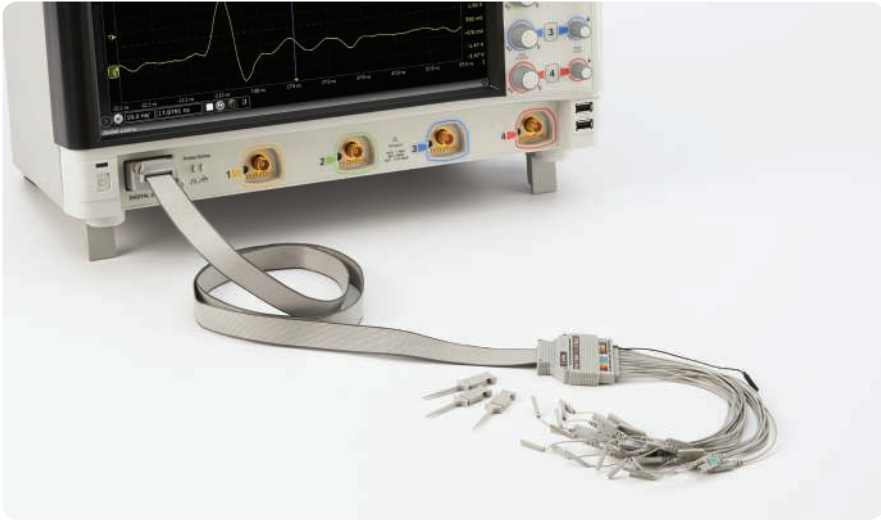
Capture more time and keep faster sample rates as horizontal settings are slowed. Additional acquisition memory can be added to the initial purchase or after purchase.

Acquisition memory depth upgrade	Option # on new scope	N2113A Option # (for previously purchased scopes)
Increase to 100 Mpts/200 Mpts (4-ch/2-ch)	DSOS000-100	100
Increase to 200 Mpts/400 Mpts (4-ch/2-ch)	DSOS000-200	200
Increase to 400 Mpts/800 Mpts (4-ch/2-ch)	DSOS000-400	400

All S-Series oscilloscopes ship with the same hardware and are calibrated to 8 GHz on the production line. In less than 1 minute, any lower-bandwidth S-Series scope can be user-upgraded to any higher bandwidth.

Bandwidth upgrades	
DSOS8GBW	Upgrade to 8 GHz bandwidth
DSOS6GBW	Upgrade to 6 GHz bandwidth
DSOS4GBW	Upgrade to 4 GHz bandwidth
DSO2G5BW	Upgrade to 2.5 GHz bandwidth
DSOS2GBW	Upgrade to 2 GHz bandwidth
DSOS1GBW	Upgrade to 1 GHz bandwidth

Upgrade any DSO model to an MSO in less than 1 minute with the N2901E MSO upgrade kit.





# S-Series Ordering Configuration

## S-Series Ordering Configuration

1. Choose needed bandwidth
2. Choose MSO or DSO
3. Choose desired software applications
4. Choose memory depth upgrade
5. Choose any additional probes and accessories

CAL and accessory options	
ANSI Z540 complaint calibration	DSOS000-A6J
S-Series rackmount kit (8U high)	N2902B
Additional SSDs with Win7	N2746S
GPIO to LAN adapter	N4865A

DSO models 4 scope channels	MSO models 4 scope channels +16 digital channels	Max analog bandwidth	Scope channels		Standard memory depth 2 channels 4 channels	Digital channels
			Max sample rate 2 channels 4 channels	ADC bits		
DSOS054A	MSOS054A	500 MHz	20 GSa/s 10 GSa/s	10	100 Mpts 50 Mpts	16 on MSO models
DSOS104A	MSOS104A	1 GHz				
DSOS204A	MSOS204A	2 GHz				
DSOS254A	MSOS254A	2.5 GHz				
DSOS404A	MSOS404A	4 GHz				
DSOS604A	MSOS604A	6 GHz				
DSOS804A	MSOS804A	8 GHz				



### Standard accessories Included

All models ship standard with: 3-year warranty, four N2873A 500-MHz passive probes, probe accessory pouch, Agilent I/O libraries suite, localized power cord, front panel cover, 8 GHz BNC calibration cable, keyboard, and mouse.

User guide and programmer's guide ship on oscilloscope drive. Service guide available on Agilent.com. MSO models additionally ship with 16-channel flying lead set logic probe, MSO cable, and MSO calibration fixture.

# Infiniium S-Series Performance Characteristics

## Vertical

DSO/MSO models	S-054A	S-104A	S-204A	S-254A	S-404A	S-604A	S-804A
<b>Vertical - scope channels</b>							
Input channels	DSO models - 4 analog MSO models - 4 analog + 16 digital						
Analog bandwidth (–3 dB)	50 Ω <sup>1</sup>	500 MHz	1 GHz	2 GHz	2.5 GHz	4 GHz	6 GHz <sup>6</sup>
	1 MΩ	500 MHz	500 MHz	500 MHz	500 MHz	500 MHz	500 MHz
Vertical resolution <sup>2,3</sup>	10 bits, up to 12 bits with high-resolution mode						
Typical rise time/fall time 10 to 90% <sup>4</sup>	860 ps	430 ps	215 ps	172 ps	107.5 ps	71.7 ps	53.8 ps
Typical rise time/fall time 10 to 90% <sup>5</sup>	620 ps	310 ps	155 ps	124 ps	77.5 ps	51.7 ps	33.8 ps
Input impedance <sup>1</sup>	50 Ω: ±3.5% (typical ±1% at 25 °C) 1 MΩ: ±1% (14 pF typical)						
Input sensitivity <sup>3</sup>	50 Ω: 1 mV/div to 1 V/div 1 MΩ: 1 mV/div to 5 V/div						
Input coupling	50 Ω: DC 1 MΩ: AC (> 11 Hz), DC						
Bandwidth limit filters (analog)	20 MHz, 200 MHz						
DSP bandwidth limit filters	Increments of 500 MHz up to rated scope bandwidth						
Channel-to-channel isolation	DC to 100 MHz: 50 dB 100 MHz to 1 GHz: 40 dB > 1 GHz: 30 dB						
DC gain accuracy <sup>1,2,3</sup>	±1% of full scale at full resolution (typical 5 mV to 1 V per division) ±2% of full scale at full resolution <sup>1</sup>						
Max input voltage <sup>1</sup>	50 Ω: ±5 V 1 MΩ: 300 V <sub>rms</sub> , 400 V <sub>peak</sub>						
Offset range	50 Ω			1 M Ω			
	Vertical sensitivity	Available offset		Vertical sensitivity	Available offset		
	All	±12 divisions or ±4 V, whichever is smallest		< 10 mV	±2 V		
				≥ 10 mV	±5 V		
				≥ 20 mV	±10 V		
			≥ 100 mV	±20 V			
			≥ 1 V	±100 V			

1. Denotes warranted specifications, all others are typical. Specifications are valid after a 30-minute warm-up period and ±5 °C from firmware calibration temperature. Input impedance is valid when V/div scaling is adjusted to show all waveform vertical values within the oscilloscope display.

2. Vertical resolution = 0.4% of full scale.

3. 50 Ω input: Full scale is defined as 8 vertical divisions. Magnification is used below 2 mV/div, full-scale is defined as 16 mV. The major scale settings are 5 mV, 10 mV, 20 mV, 50 mV, 100 mV, 200 mV, 500 mV, 1 V. Testing is at maximum sample rate.

1 MΩ input: Full scale is defined as 8 vertical divisions. Magnification is used below 2 mV/div, full-scale is defined as 16 mV. The major scale settings are 5 mV, 10 mV, 20 mV, 50 mV, 100 mV, 200 mV, 500 mV, 1 V, 2 V, 5 V. Testing is at maximum sample rate.

4. Calculation based on  $Tr = 0.43/BW$ .

5. Calculation based on  $Tr = 0.31/BW$ .

6. 6 GHz and 8 GHz bandwidth supported in 2-channel mode. If all four channels are on, a maximum bandwidth of 4 GHz is supported.

# Infiniium S-Series Performance Characteristics *(continued)*

## Vertical

Offset accuracy <sup>1,3</sup>	$\pm 0.1 \text{ div} \pm 2 \text{ mV} \pm 1\%$ of offset setting for offsets < 2 V $\pm 0.1 \text{ div} \pm 2 \text{ mV} \pm 1.5\%$ of offset setting for offsets $\geq 2 \text{ V}$	
Dynamic range <sup>4</sup>	50 $\Omega$ : $\pm 4$ divisions from center screen	
	1 M $\Omega$ : $\pm 4$ divisions from center screen	1 mV to 100 mV; 2nd harmonic distortion of $-30 \text{ dBc}$ 101 mV to 5 V; 2nd harmonic distortion of $-20 \text{ dBc}$
DC voltage measurement accuracy <sup>2</sup>	Dual cursor:	$\pm [(\text{DC gain accuracy}) + (\text{resolution})]$
	Single cursor:	$\pm [(\text{DC gain accuracy}) + (\text{offset accuracy}) + (\text{resolution}/2)]$

### RMS noise floor (V<sub>rms ac</sub>)

Vertical setting (Volts/div)	S-054A	S-104A	S-204A	S-254A	S-404A	S-604A	S-804A
1 mV/div	74 $\mu\text{V}$	90 $\mu\text{V}$	120 $\mu\text{V}$	130 $\mu\text{V}$	153 $\mu\text{V}$	195 $\mu\text{V}$	260 $\mu\text{V}$
2 mV/div	74 $\mu\text{V}$	90 $\mu\text{V}$	120 $\mu\text{V}$	130 $\mu\text{V}$	153 $\mu\text{V}$	195 $\mu\text{V}$	260 $\mu\text{V}$
5 mV/div	77 $\mu\text{V}$	94 $\mu\text{V}$	129 $\mu\text{V}$	135 $\mu\text{V}$	173 $\mu\text{V}$	205 $\mu\text{V}$	320 $\mu\text{V}$
10 mV/div	87 $\mu\text{V}$	110 $\mu\text{V}$	163 $\mu\text{V}$	172 $\mu\text{V}$	220 $\mu\text{V}$	256 $\mu\text{V}$	390 $\mu\text{V}$
20 mV/div	125 $\mu\text{V}$	163 $\mu\text{V}$	233 $\mu\text{V}$	254 $\mu\text{V}$	330 $\mu\text{V}$	446 $\mu\text{V}$	620 $\mu\text{V}$
50 mV/div	372 $\mu\text{V}$	456 $\mu\text{V}$	610 $\mu\text{V}$	650 $\mu\text{V}$	768 $\mu\text{V}$	1.3 mV	1.4 mV
100 mV/div	0.78 mV	0.96 mV	1.2 mV	1.3 mV	1.6 mV	2.3 mV	3.1 mV
200 mV/div	1.6 mV	2.0 mV	2.6 mV	2.8 mV	3.4 mV	4.9 mV	6.4 mV
500 mV/div	3.5 mV	4.2 mV	5.5 mV	6 mV	7.3 mV	10.0 mV	13.3 mV
1 V/div	5.1 mV	6.8 mV	9.2 mV	10.1 mV	12.5 mV	17.6 mV	24.1 mV

Vertical - digital channels	
Input channels	16 channels of timing
Analog bandwidth	400 MHz
Threshold selections	User-defined, TTL, 5.0 V CMOS, 3.3 V CMOS, 2.5 V CMOS, ECL, PECL, differential
User-defined threshold range	$\pm 8.00 \text{ V}$ in 10 mV increments
Maximum input voltage	$\pm 40 \text{ V}$ peak
Threshold accuracy	$\pm (100 \text{ mV} + 3\%$ of threshold setting)
Input dynamic range	$\pm 10 \text{ V}$ about threshold
Minimum input voltage swing	500 mV peak-to-peak
Input impedance	100 k $\Omega$ $\pm 2\%$ ( $\sim 8 \text{ pF}$ ) at probe tip
Channel-to-channel skew	500 ps (typical)
Resolution	1 bit

1. Denotes warranted specifications, all others are typical. Specifications are valid after a 30-minute warm-up period and  $\pm 5 \text{ }^\circ\text{C}$  from firmware calibration temperature. Input impedance is valid when V/div scaling is adjusted to show all waveform vertical values within the oscilloscope display.

2. Vertical resolution = 0.4% of full scale.

3. 50  $\Omega$  input: Full scale is defined as 8 vertical divisions. Magnification is used below 2 mV/div, full-scale is defined as 16 mV. The major scale settings are 5 mV, 10 mV, 20 mV, 50 mV, 100 mV, 200 mV, 500 mV, 1 V. Testing is at maximum sample rate.

1 M $\Omega$  input: Full scale is defined as 8 vertical divisions. Magnification is used below 2 mV/div, full-scale is defined as 16 mV. The major scale settings are 5 mV, 10 mV, 20 mV, 50 mV, 100 mV, 200 mV, 500 mV, 1 V, 2 V, 5 V. Testing is at maximum sample rate.

4. For a 10:1 probe on the 1 M $\Omega$  input, vertical scaling is multiplied by 10.

# Infiniium S-Series Performance Characteristics *(continued)*

## Horizontal

### Horizontal System: scope channels

Main timebase range	5 pS/div to 20 S/div	
Resolution	1 ps	
Modes	Main, delayed, roll *(200 ms to 20 sec)	
Reference position	Left, center, right	
Horizontal position range	0 to ± 200 S	
Delayed sweep range	1 pS/div to current main time scale setting	
Time scale accuracy <sup>1</sup>	After-factory calibration (uses GPS 10-MHz reference) ± (100 ppb per year (aging)) TE	
	After-performance verification procedure in service guide (does not use GPS 10-MHz reference) ± [100 ppb (immediately after calibration) ± (75 ppb per year (aging))] TE	
Oscilloscope channel deskew	Range = -1ms to +1ms	
Delta-time measurement accuracy <sup>2,3,4,5</sup>		
Single-shot peak-to-peak measurement	$5 \cdot \sqrt{(\text{Noise}/(\text{Slew Rate}))^2 + (\text{Intrinsic Jitter})^2} + \left( \frac{\text{Time Scale Accuracy} \cdot \text{Reading}}{2} \right)$ Seconds	
Absolute with 256 averages	$0.35 \cdot \sqrt{(\text{Noise}/(\text{Slew Rate}))^2 + (\text{Intrinsic Jitter})^2} + \left( \frac{\text{Time Scale Accuracy} \cdot \text{Reading}}{2} \right)$ Seconds	
Jitter measurement floor <sup>2,3</sup>		
Intrinsic jitter <sup>2</sup>	Acquired time range	Intrinsic jitter (typical)
	< 1 μs	100 ns/div
	100 ns/div	100 fs rms
	1 μs/div	123 fs rms
	10 μs/div	138 fs rms
	100 μs/div	145 fs rms
	1 ms/div	200 fs rms
	10 ms/div	
Time interval error <sup>4</sup>	TIE: $\sqrt{(\text{Noise}/(\text{Slew Rate}))^2 + (\text{Intrinsic Jitter})^2}$ Seconds rms	
Period jitter	$\sqrt{2} \cdot \sqrt{(\text{Noise}/(\text{Slew Rate}))^2 + (\text{Intrinsic Jitter})^2}$ Seconds rms	
Cycle-cycle jitter (N=1)	$\sqrt{3} \cdot \sqrt{(\text{Noise}/(\text{Slew Rate}))^2 + (\text{Intrinsic Jitter})^2}$ Seconds rms	

1. Denotes warranted specifications, all others are typical. Specifications are valid after a 30-minute warm-up period and ± 5 °C from firmware calibration temperature. Input impedance is valid when V/div scaling is adjusted to show all waveform vertical values within the oscilloscope display.
2. Conditions: Input - 725 mVpp signal, scope BW 8 GHz, 120 mV/div, 20 GSa/s sample rate, sin(x)/x interpolation enabled, measurement threshold fixed at 50% of the peak-to-peak signal amplitude, measurement derived from single edge (rising or falling).
3. Noise is the displayed rms noise floor over the entire width of the display. Slew rate is the displayed or calculated (peak signal amplitude · 2πf) slew rate at the threshold crossings. Conditions: 20 GSa/s sample rate, sin(x)/x interpolation enabled, measurement threshold fixed at 50% of the peak-to-peak signal amplitude. Intrinsic jitter is time range dependent.
4. Time ranges ≤ 10 us.
5. Values represent time error between two edges on a single channel. Standard deviation value refers to the stand deviation of 256 consecutive measurements. Reading is the displayed DTMA measurement value.

# Infiniium S-Series Performance Characteristics *(continued)*

## Acquisition and trigger

	S-054A	S-104A	S-204A	S-254A	S-404A	S-604A										
<b>Acquisition - scope channels</b>																
Maximum real time sample rate	4 x 10 GSa/s or 2 x 20 GSa/s															
Standard memory depth	50 Mpts x 4 channels, 100 Mpts x 2 channels															
Memory options	Option 100: 100 Mpts x 4 channels, 200 Mpts x 2 channels Option 200: 200 Mpts x 4 channels, 400 Mpts x 2 channels Option 400: 400/200 Mpts x 4 channels, 800/400 Mpts x 2 channels (single/repetitive mode)															
Sampling modes	Real time Real time with peak detect High resolution (10, 11, 12 bit user selection) Equivalent time Segmented memory <table border="1" style="margin-left: 20px;"> <thead> <tr> <th>Memory depth</th> <th>Maximum number of segments</th> </tr> </thead> <tbody> <tr> <td>Standard (50 Mpts/ch)</td> <td>16,384</td> </tr> <tr> <td>100 Mpts/ch</td> <td>32,768</td> </tr> <tr> <td>200 Mpts/ch</td> <td>65,536</td> </tr> <tr> <td>400 Mpts/ch</td> <td>65,536</td> </tr> </tbody> </table> Roll (200 ms to 20 sec)						Memory depth	Maximum number of segments	Standard (50 Mpts/ch)	16,384	100 Mpts/ch	32,768	200 Mpts/ch	65,536	400 Mpts/ch	65,536
Memory depth	Maximum number of segments															
Standard (50 Mpts/ch)	16,384															
100 Mpts/ch	32,768															
200 Mpts/ch	65,536															
400 Mpts/ch	65,536															
Filters	Sin(x)/x interpolation															
<b>Acquisition - digital channels</b>																
Maximum real time sample rate	2 GSa/s															
Max memory depth per channel	128/64 Mpts with 2 GSa/s, 64/32 Mpts with < 2 GSa/s (single/repetitive)															
Minimum width glitch detect	2 nS															
<b>Trigger – scope channels</b>																
DSO/MSO models	S-054A	S-104A	S-204A	S-254A	S-404A	S-604A										
	Ch 1,2,3,4, aux, and line															
Max trigger freq on 50 Ω path	Full bandwidth			3 GHz bandwidth												
Sensitivity	1 MΩ input (edge trigger): DC to 500 MHz, 0.4 div 50 Ω input (edge trigger): DC to 3 GHz, 0.4 div Auxiliary (edge trigger): DC to 1 GHz (minimum input: 300 mVpp)															
Trigger level range - any channel	Ch 1,2,3,4: 50 Ω: ±4 divisions from center screen Ch 1,2,3,4: 1 MΩ: ±4 divisions from center screen Auxiliary: ± 5 V (50 Ω) (maximum input: 5 Vpp)															
Sweep modes	Auto, triggered, single															
Display jitter (with jitter-free on) <sup>1,2</sup>	< 1.0 ps rms															
Trigger hold off range	100 ns to 10 s															
Trigger actions	Specify an action to occur (and the frequency of the action) when a trigger condition occurs. Actions include: email on trigger and execute “multipurpose” user settings															
Trigger coupling	1 MΩ: DC, or AC: (10 Hz) low frequency reject (50 kHz high pass filter), high frequency reject (50 kHz low pass filter)															

1. Internal edge trigger mode. Trigger threshold – fixed voltage at 50% level.

2. Display jitter example. At 100 mV/div, typical noise values are 1.6 mV rms for DSO-S404A. For slew rate of 500 mV pp sin wave with frequency equal to max analog bandwidth, typical display jitter is 800 fs RMS.

# Infiniium S-Series Performance Characteristics *(continued)*

## Trigger

### Trigger: digital channels MSO Models

Threshold range (user defined)	±8.0 V in 10-mV increments
Threshold accuracy	±(100 mV + 3% of threshold setting)

### Trigger modes

Edge (analog and digital)	Triggers on a specified slope (rising, falling or alternating between rising and falling) and voltage level on any channel.	
Edge transition (analog)	Trigger on rising or falling edges that cross two voltage levels in > or < the amount of time specified. Edge transition setting from 250 ps.	
Edge then edge (time) (analog and digital)	The trigger is qualified by an edge. After a specified time delay between 10 ns to 10 s, a rising or falling edge on any one selected input will generate the trigger.	
Edge then edge (event) (analog and digital)	The trigger is qualified by an edge. After a specified delay between 1 to 16,000,000 rising or falling edges, another rising or falling edge on any one selected input will generate the trigger.	
Glitch (analog and digital)	Triggers on glitches narrower than the other pulses in your waveform by specifying a width less than your narrowest pulse and a polarity. Glitch range settings equal pulse width settings	
Pulse width (analog and digital)	Trigger on a pulse that is wider or narrower than specified. Pulse width range setting is 250 ps to 10 s for analog channels and 2 ns to 10 s for digital channels	
1 GHz and 500 MHz model	Minimum detectable pulse width:	150 ps for analog channels 1 ns for digital channels
2 GHz and 2.5 GHz model	Minimum detectable pulse width:	100 ps for analog channels 1 ns for digital channels
4 GHz, 6 GHz, 8 GHz model	Minimum detectable pulse width:	50 ps for analog channels 1 ns for digital channels
Runt (analog)	Triggers on a pulse that crosses one threshold but fails to cross a second threshold before crossing the first again. Runt settings equal pulse width settings.	
Timeout (analog and digital)	Trigger when a channel stays high, low, or unchanged for too long. Timeout settings equal pulse width settings.	
Pattern/pulse range (analog and digital)	Triggers when a specified logical combination of the channels is entered, exited, present for a specified period of time or is within a specified time range or times out. Each channel can have a value of High (H), Low (L) or Don't care (X).	
State (analog and digital)	Pattern trigger clocked by the rising, falling or alternating between rising and falling edge of one channel.	
Setup/hold (analog)	Triggers on setup, hold, or setup and hold violations in your circuit. Requires a clock and data signal on any two inputs (except aux or line) channels as trigger sources. Setup and/or hold time must then be specified.	
Window (analog)	Trigger on entering, exiting, or inside specified voltage range	
Protocol packets	Requires specified protocol option, I <sup>2</sup> C, SPI, CAN, LIN, RS-232/UART, JTAG, SVID, USB, PCIe	
Zone-qualified	Requires InfiniiScan software option. SW-based triggering across up to 8 user-drawn zones. For each zone, user specifies "must intersect" or "must not intersect." Zones can be drawn on multiple channels and combined using Boolean expressions.	

# Infiniium S-Series Performance Characteristics *(continued)*

## Measurements and math

### Measurements and math

---

Math functions can operate on any combination of channels, memories, or other functions.

Math functions	Up to 16 independent functions
Gates	Up to 16 (any function can be used as a gate)
Waveform measurements	Can be made on either main, zoom, or gated region with up to 20 simultaneous measurements
Waveform memories	Four for scope waveforms, one memory that includes all digital channels simultaneously
Voltage (scope channels)	Peak-to-peak, minimum, maximum, average, RMS, amplitude, base, top, overshoot, V overshoot, preshoot, V preshoot, upper, middle, lower, crossing point voltage, pulse top, pulse base, pulse amplitude
Time (digital channels)	Period, frequency, positive width, negative width, duty cycle, delta time
Time (scope channels)	Rise time, fall time, period, frequency, positive width, negative width, duty cycle, T <sub>min</sub> , T <sub>max</sub> , T <sub>volt</sub> , channel-to-channel delta time, channel-to-channel phase, count pulses, burst width, burst period, burst interval, setup time, hold time
Mixed (scope channels only)	Area, slew rate
Frequency domain	FFT frequency, FFT magnitude, FFT delta frequency, FFT delta magnitude
Level qualification	Any channels that are not involved in a measurement can be used to level-qualify all timing measurements
Eye-diagram measurements	Eye height, eye width, eye jitter, crossing percentage, Q factor, and duty-cycle distortion
Measurement modes	
Statistics	Displays the mean, standard deviation, minimum, maximum range, and number of measurement values for the displayed automatic measurements
Histograms	
Source	Waveform or measurement
Orientation	Vertical (for timing and jitter measurements) or horizontal (noise and amplitude change) modes, regions are defined using waveform markers
Measurements	Mean, standard deviation, mean $\pm 1, 2,$ and 3 sigma, median, mode, peak-to-peak, min, max, total hits, peak (area of most hits), X scale hits, and X offset hits
Marker modes	Manual markers, track waveform data, track measurements, and delta marker values can be displayed
Waveform math	
Operators	Absolute value, add, AM demodulation, average, gating, Butterworth <sup>2</sup> , common mode, differentiate, divide, envelope, FFT magnitude, FFT phase, FIR <sup>11</sup> , high pass filter, integrate, invert, LFE <sup>2</sup> , low pass filter (4th-order Bessel Thompson filter), magnify, max, min, multiply, RT Eye <sup>2</sup> , smoothing, SqrtSumOfSquare <sup>2</sup> , square, square root, subtract, versus, chart (MSO models)
Automatic measurements	Measure menu access to all measurements, up to 20 measurements can be displayed simultaneously
Multipurpose	User-selectable for saving images when pressed or taking a series of measurements defined by the user, or other actions
Drag-and-drop measurement toolbar	Measurement toolbar with common measurement icons that can be dragged and dropped onto the displayed waveforms
FFT (FFT viewer is standard)	
Frequency range	DC to 10 GHz (at 20 GSa/s) or 5 GHz (at 10 GSa/s)
Frequency resolution	Resolution = sample rate/memory depth
Window modes	Hanning, flattop, rectangular, Blackman Harris, Hamming

---

2. Requires MATLAB software.

# Infiniium S-Series Performance Characteristics *(continued)*

## Display, computer system, and IO ports

### Display

Display	XGA 15" capacitive touch screen
Resolution	Infiniium application runs with 1024 pixels horizontally x 768 pixels vertically
Annotation	Up to 100 bookmarks can be inserted into the waveform area. Each can float or be tied to a specific waveform
Grids	Up to 4 grids per waveform area
Waveform areas	Up to 8
Waveform styles	Connected dots, dots, variable persistence, infinite persistence, color graded infinite persistence

### Computer system and peripherals, I/O ports

Computer system and peripherals	
Operating system	Windows 7 Embedded Standard
CPU	3 GHz Intel i5 quad core
PC system memory	8 GB RAM
Drives	≥ 250 GB removable SSD (solid state drive)
Peripherals	Optical USB mouse and compact keyboard supplied. All Infiniium models support any Windows-compatible input device with a USB interface
IO Ports	
LAN	RJ-45 connector, supports 10Base-T, 100Base-T, and 1000Base-T. Enables Web-enabled remote control, email on trigger, data/file transfers and network printing
USB	7 total ports: Two USB 2.0 ports on the front Four USB ports on the side (two are USB 3.0 and two are USB 2.0) One USB 3.0 port on side supporting up to 200 MB/s data offload
External display	Drivers support up to two simultaneous displays DisplayPort and VGA video out
File types	
Oscilloscope waveforms:	
Compressed:	*.wfm, *.bin, *.h5, and *.osc composite (setup and waveforms)
Internal formats:	
Larger formats:	*.csv, *.tsv, and *.txt
Digital waveform:	Support in .osc or .h5 formats
Images	.bmp, .tiff, .gif, .png or .jpg
Auxiliary output	DC (±2.4 V), square wave
Time base reference output	Amplitude into 50 Ω: 1.65 Vpp ±50 mV sine wave (8.3 dBm ±0.3 dB) regardless of whether it is derived from the internal or the external reference Frequency from internal reference: • 10 MHz ± 100 ppb if it has been calibrated within the last year
Time base external reference input (impedance into 50 Ω)	Frequency: 10 MHz ±20 ppm Amplitude: 356 mVpp (–5 dBm) minimum to 5 Vpp (+18 dBm) maximum
LXI compliance	LXI class C



## Infiniium S-Series Performance Characteristics *(continued)*

### Environmental and general

Temperature	Operating 5 to 40°C Non-operating –40 to +65°C
Humidity	Operating up to 90% relative humidity (non-condensing) at +40 °C Non-operating up to 90% relative humidity (non-condensing) at +65 °C
Altitude	Operating up to 4,000 meters (12,000 feet) Non-operating up to 15,300 meters (50,000 feet)
Vibration	Operating random vibration 5-500 Hz, 10 minutes per axis, 0.3 g (rms) Non-operating random vibration 5-500 Hz, 10 minutes per axis, 2.41 g (rms); resonant search 5-500 Hz, swept sine, 1 octave/minute sweep rate, (0.75 g), 5 minute resonant dwell at 4 resonances per axis
Power	100-120 V, ± 10% 50/60/400 Hz 100-240 V, ± 10% 50/60 Hz Max power dissipated: 375 W
Typical operator noise	35 dB at front of instrument
Weight	Frame: 12 kg (26.4 lbs). Shipping:
Dimensions (with feet retracted)	Height: 12.9 in (33 cm); width: 16.8 in (43 cm); depth: 9 in (23 cm)
Safety	CAN/CSA22.2 No. 61010-1-12 UL Std. 61010-1 (3rd Edition)
Electromagnetic compatibility standards	IEC 61326-1:2005/EN 61326-1:2006 CISPR 11/EN 55011 IEC 61000-4-2/EN 61000-4-2 IEC 61000-4-3/EN 61000-4-3 IEC 61000-4-4/EN 61000-4-4
MTBF (mean time before failure)	110,000 hours (typical)



### myAgilent

[www.agilent.com/find/myagilent](http://www.agilent.com/find/myagilent)

A personalized view into the information most relevant to you.



### [www.lxistandard.org](http://www.lxistandard.org)

LAN eXtensions for Instruments puts the power of Ethernet and the Web inside your test systems. Agilent is a founding member of the LXI consortium.



### [www.pxisa.org](http://www.pxisa.org)

PCI eXtensions for Instrumentation (PXI) modular instrumentation delivers a rugged, PC-based high-performance measurement and automation system.



### Three-Year Warranty

[www.agilent.com/find/ThreeYearWarranty](http://www.agilent.com/find/ThreeYearWarranty)

Beyond product specification, changing the ownership experience. Agilent is the only test and measurement company that offers three-year warranty on all instruments, worldwide.



### Agilent Assurance Plans

[www.agilent.com/find/AssurancePlans](http://www.agilent.com/find/AssurancePlans)

Five years of protection and no budgetary surprises to ensure your instruments are operating to specifications and you can continually rely on accurate measurements.



### [www.agilent.com/quality](http://www.agilent.com/quality)



Agilent Electronic Measurement Group  
DEKRA Certified ISO 9001:2008  
Quality Management System

### Agilent Channel Partners

[www.agilent.com/find/channelpartners](http://www.agilent.com/find/channelpartners)

Get the best of both worlds: Agilent's measurement expertise and product breadth, combined with channel partner convenience.



## Agilent Technologies Oscilloscopes

Multiple form factors from 20 MHz to > 90 GHz | Industry leading specs | Powerful applications

[www.agilent.com](http://www.agilent.com)  
[www.agilent.com/find/S-Series](http://www.agilent.com/find/S-Series)

For more information on Agilent Technologies' products, applications or services, please contact your local Agilent office. The complete list is available at:

[www.agilent.com/find/contactus](http://www.agilent.com/find/contactus)

### Americas

Canada	(877) 894 4414
Brazil	(11) 4197 3600
Mexico	01800 5064 800
United States	(800) 829 4444

### Asia Pacific

Australia	1 800 629 485
China	800 810 0189
Hong Kong	800 938 693
India	1 800 112 929
Japan	0120 (421) 345
Korea	080 769 0800
Malaysia	1 800 888 848
Singapore	1 800 375 8100
Taiwan	0800 047 866
Other AP Countries	(65) 375 8100

### Europe & Middle East

Belgium	32 (0) 2 404 93 40
Denmark	45 45 80 12 15
Finland	358 (0) 10 855 2100
France	0825 010 700*
	*0.125 €/minute
Germany	49 (0) 7031 464 6333
Ireland	1890 924 204
Israel	972-3-9288-504/544
Italy	39 02 92 60 8484
Netherlands	31 (0) 20 547 2111
Spain	34 (91) 631 3300
Sweden	0200-88 22 55
United Kingdom	44 (0) 118 927 6201

For other unlisted countries:

[www.agilent.com/find/contactus](http://www.agilent.com/find/contactus)

(BP-01-15-14)

Product specifications and descriptions in this document subject to change without notice.

© Agilent Technologies, Inc. 2014  
Published in USA, May 15, 2014  
5991-3904EN



# Agilent Technologies