



Controlling network performance is just a matter of improving your vision.

*The OptiView Series II Integrated Network Analyzer gives you the quick network visibility you need to resolve today's network problems faster and smarter. Combined with its network analysis and monitoring capabilities, you'll have complete network vision in one power-packed portable tool.*

**OptiView™**

**Series II Integrated Network Analyzer**

## Leverage the power of integration

Now one tool is all it takes to troubleshoot, analyze and monitor your entire network.

- **An immediate window into your network means faster MTTR.** The easy-to-use graphical user interface, combined with the information rich front page and advanced network functions, gives you a comprehensive understanding of your network within seconds. Expand your view with WLAN, VLAN and WAN Vision options.
- **Network analysis capabilities keep you on top of your network.** The high-performance protocol analysis capabilities of the OptiView Series II Integrated Network Analyzer means you'll have the detailed information you need to solve even the most complex network problems. And its network device analysis, network documentation and baselining capabilities give you the at-a-glance information you need to anticipate network requirements.
- **Network monitoring capabilities leverage your investment.** The monitoring features of the OptiView Series II Integrated Network Analyzer include up to seven simultaneous remote access/control sessions, RMON II traffic statistics accessible by any standard network management system and the capability of generating SNMP traps. The OptiView browser allows you to access and control any other Fluke Networks analyzer connected to the network.

## Skip the learning curve

Plug it in, turn it on and see the difference from your first glance at the start-up screen. The Series II Integrated Network Analyzer's Windows-based graphical user interface and touch-screen color display are intuitive and easy to use. Auto-configuration saves time and money. Features can be secured according to the technical level of the user. Active discovery interrogates the entire switch and quickly pinpoints the problem. Contextually-linked data simplifies optimization, so users can focus on solving the problem – not struggling to learn the tool or re-learn it if they haven't used it in a while. The bottom line? Reduced training time and increased value across your organization.

## See the "big news" in seconds

The Series II Integrated Network Analyzer transforms the ordinary start-up screen into an information-rich Network Front Page that simultaneously displays the results of multiple advanced network functions. With this level of expert automation, you get a comprehensive understanding of your network within seconds – gathering information at a glance that you'd have to drill down to get from an assortment of other tools.

## Take it with you

Smaller than a laptop and battery-powered for up to three hours, the Series II Integrated Network Analyzer is designed to go wherever your network takes you.



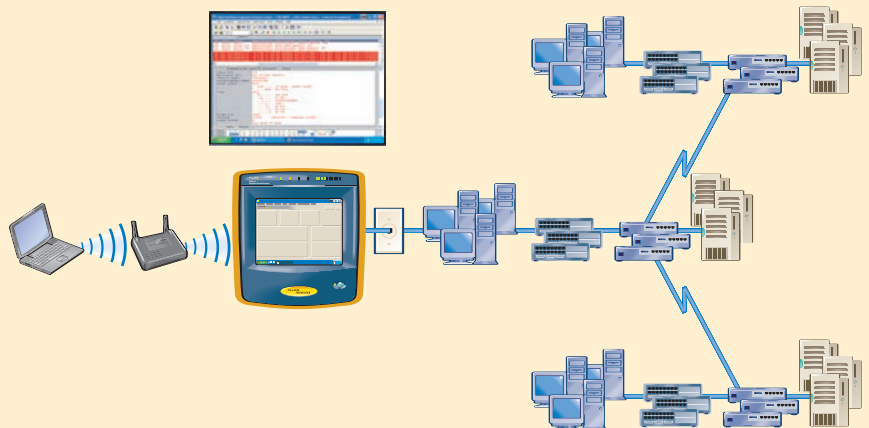
It's the ideal tool for traveling diagnostics; no more hassling with big, unwieldy boxes and multiple tools.

## Manage both your wireline and wireless networks with the Wireless Option

A wireless option gives you a tool that provides both 10/100/1000 Mbps wired and 802.11 a/b/g wireless network visibility.

## Verify WAN link performance with the WAN Vision and Internet Throughput Options

Simplify management and troubleshooting of costly WAN links by using the Internet Throughput option to generate traffic while accessing SNMP agents in routers utilizing standards-based MIBs to provide you with information on ATM, Frame Relay, ISDN, T1/E1, T3 and Packet over Sonet performance and health.



### Discover devices outside the local broadcast with the VLAN Vision Option

The OptiView™ Series II Integrated Network Analyzer with the VLAN Vision Option now allows you to discover which VLANs are configured on which switches and the member switch ports for each VLAN. Additionally, the analyzer will identify which interfaces are trunk or uplink ports and what trunk protocol is in use. The VLAN Vision Option also enables the analyzer to discover devices on user specified subnets outside the local broadcast domain.

### Expert Analysis Option speeds up troubleshooting

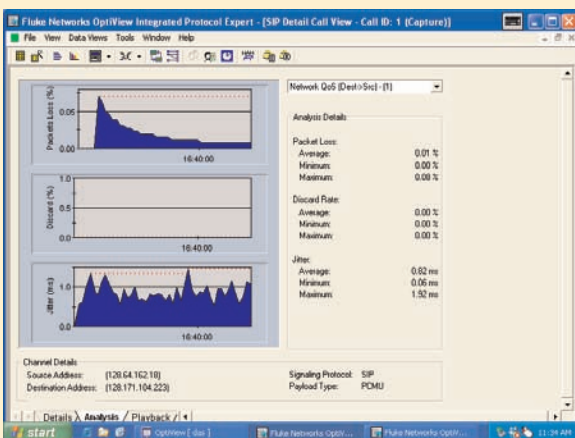
The OptiView Series II Integrated Network Analyzer with the Expert Analysis Option automatically detects problems while analyzing captured packets collected by the analyzer. The Expert View categorizes the problems detected by OSI layers – Datalink, Network, Transport, Session and Application. It summarizes the address or name of the stations involved, and the position of frames in the capture file that trigger the Expert System to identify the problem. Double-clicking on the Expert Symptom button displays the Expert Diagnosis window that provides a description of the station symptom, a probable cause and recommended action(s).



### New levels of functionality

A single power-packed portable tool integrates:

- Active discovery in switched networks
- Seven-layer analysis
- Fully automatic IP configuration – even without DHCP
- Address-to-name mapping
- Traffic generation
- Direct connection to 100BASE-FX (Pro models)
- Packet capture and decode (Pro models)
- SNMP device analysis
- RMON II traffic analysis (Pro models)
- Gigabit fiber and copper testing capabilities (Pro Gigabit model)
- Cable testing



### VoIP Option validates call quality

The OptiView Series II Integrated Network Analyzer with the VoIP Option offers a portable solution to measure the Quality of Service and enables solving “real-world” call problems in a deployed environment. Full decode of multimedia protocols provides the ability to look at any captured packet and understand its contents. The VoIP option validates that the network is performing as it has been configured and

provides graphical summaries of Call Jitter, Dropped Packets, and Call Set-up Time to view network performance at-a-glance.

### Capture it all with optional monitoring and reporting software

To add the power of full-time network monitoring and reporting features, choose OptiView Console. It lets you quickly document your network, then continuously monitor a segment for changes and problems. Create professional documentation and publish them in a variety of formats – including HTML.

## Here's what network engineers are saying about the OptiView Series II Integrated Network Analyzer by Fluke Networks:

*"OptiView's integration of active, passive, and drill down analysis capabilities offers insight you can't get in a traditional protocol analyzer. This is the most significant advancement in network analysis since the introduction of the Expert Sniffer."*

*"This is convenient and easy to use, plus I can see more than ever before. Until now, I had to go up to the control room to monitor my network, but with this unit, I can do it all from my desk. If I do need to go anywhere, I could take it with me instead of carrying a PC and lugging around all the other stuff that I use."*

*"A highly intelligent, all-encompassing troubleshooter. Extremely useful if you want to cut man-hours and troubleshoot remote locations."*

*"We're looking for the next step up, to combine a physical layer tester and a network analyzer. This seems to be it. It has all the cable test functionality we need, and also decodes packets. The remote access is the icing on the cake."*

*"OptiView is revolutionizing network testing by integrating both wireline and wireless testing into one tool. We at Tuanis Technology are pleased to see this kind of functionality extended to wireless networks. This enables us to deploy wireless networks faster and more reliably which increases our value to customers."*

*"When you're in a troubleshooting situation, the OptiView can pay for itself for a long, long time in just a few minutes, and that's really what I bought it for – to protect me against the 'big ones,' so to speak. I have a portable tool that I can take anywhere, anytime, to isolate any problem that may arise. I don't have to play a guessing game, or sit around for hours and try to figure out what the problem is. We've got the tools that quickly isolate any LAN problem."*

### **Our Network SuperVision Gold Support plans give you exclusive services and 24/7 technical assistance.**

Sign up for our Gold Support plan and you'll enjoy outstanding privileges to protect and add value to your investment in Fluke Networks equipment. They include unlimited tech assistance seven days a week, 24-hours a day via phone or at our web site support center. No fee repairs on covered items and overnight exchange/loaner units for uninterrupted service. Free software and firmware upgrades. Scheduled calibration and performance verification services. Unlimited web-based training and discounted pricing on instructor-led and custom on-site training programs. Access to our extensive Knowledge Base library of operations and application related technical articles. And, Gold "Members Only" special prices and promotions. Some benefits are not available in all countries. See [www.flukenetworks.com/goldsupport](http://www.flukenetworks.com/goldsupport) for more information.



#### **NETWORK SUPERVISION**

**Fluke Networks**  
P.O. Box 777, Everett, WA USA 98206-0777

**Fluke Networks** operates in more than 50 countries worldwide. To find your local office contact details, go to [www.flukenetworks.com/contact](http://www.flukenetworks.com/contact).

©2005 Fluke Corporation. All rights reserved.  
Printed in U.S.A. 8/2005 1581273 B-ENG-N Rev G