

# FTB-8120NGE/8130NGE

## Power Blazer

NETWORK TESTING – TRANSPORT AND DATACOM



Global award for technology innovation  
in 1 and 10 Gigabit Ethernet testing



GLOBAL SONET/SDH TEST EQUIPMENT  
PRODUCT LINE STRATEGY AWARD



Fully integrated multiservice test solution supporting next-generation SONET/SDH, optical transport network (OTN), Ethernet and Fibre Channel test functions

- DS0/E0 to OC-192/STM-64/OTU2; 10 Mbit/s to 10 Gbit/s LAN/WAN as well as 1x, 2x, 4x and 10x Fibre Channel testing in the industry's smallest form factor
- Fully integrated solution for assessing the performance of Ethernet transport networks, including RFC 2544, BER testing and multistream generation and analysis
- Comprehensive Fibre Channel test capabilities, including framed and unframed BERT, buffer-to-buffer credit estimation and round-trip latency measurements
- OTN forward error correction (FEC) and optical channel data unit (ODU) multiplex testing capabilities as per ITU-T G.709
- Ethernet-over-SONET/SDH (EoS) testing via GFP, VCAT and LCAS software options

### Platform Compatibility

- FTB-400 Universal Test System
- FTB-200 Compact Platform



## The Choice for Integrated Multiservice Transport Testing

The responsibilities of traditional SONET/SDH telecom field installation personnel have evolved over the last few years. With the advent of packet-aware SONET/SDH add-drop multiplexers—including multiservice transport platforms (MSTPs) and new reconfigurable add-drop multiplexers (ROADMs)—technicians must not only perform traditional SONET/SDH tests, but are now also responsible for verifying packet-based services such as Ethernet, 10 Gigabit Ethernet and Fiber Channel running over the same network elements.

This has resulted in a growing need for multitechnology test solutions to support the deployment, operation and maintenance of these multiservice platforms and the corresponding data-aware SONET/SDH networks.

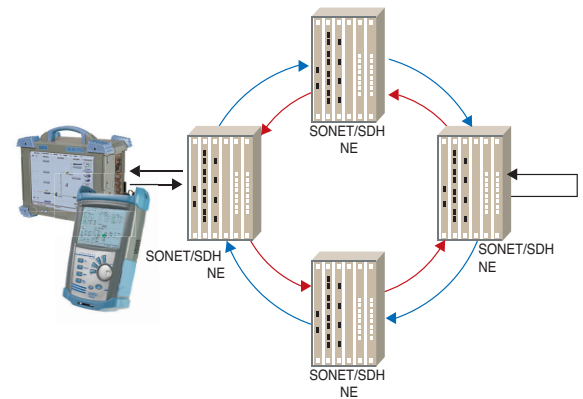
EXFO's FTB-8120NGE (2.5/2.7 Gbit/s) and FTB-8130NGE (10/10.7 Gbit/s) Power Blazer test modules have been designed to specifically address such field commissioning and maintenance requirements, providing SONET/SDH, Ethernet and Fibre Channel test functions in the industry's smallest and most efficient form factor and setting a new standard for multiservice field testing.

## Scalable, High-Performance SONET/SDH Testing

### SONET/SDH Service Turn-Up and Troubleshooting

The FTB-8120NGE/8130NGE Power Blazer modules offer a wide range of SONET/SDH test functions ranging from simple bit error rate (BER) testing to advanced characterization and troubleshooting procedures. These functions include:

- Mixed and bulk payload generation and analysis from 64 bit/s to 10 Gbit/s
- High-order mappings: STS-1/3c/12c/48c/192c and AU-3/AU-4/AU-4c/16c/64c
- Low-order mappings: VT1.5/2/6, TU-11/12/2/3
- Section/RS, Line/MS, high-order (HO) and low-order (LO) path overhead manipulation and monitoring
- Section/RS, Line/MS, high-order and low-order path alarm/error generation and monitoring
- High-order and low-order pointer generation and monitoring
- Tandem connection monitoring
- Performance monitoring: G.821, G.826, G.828, G.829, M.2100, M.2101
- Frequency analysis and power measurement
- Frequency offset generation
- Automatic protection switching (APS) and service disruption time (SDT) measurements
- Round-trip delay measurements
- Dual DS1/DS3 receiver testing
- Independent transmitter and receiver testing
- Through mode analysis
- Intrusive Through mode
- Programmable error/alarm injection
- DS1 FDL
- DS1 in-band loopcodes
- Fractional T1/E1 testing
- DS3 FEAC

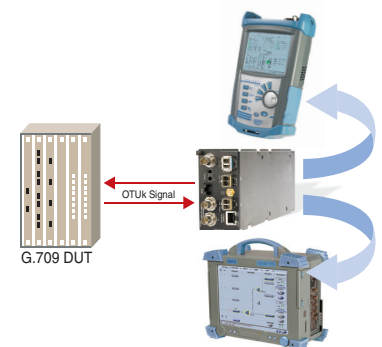


Housed in either the FTB-400 or FTB-200 platform, the FTB-8120NGE/8130NGE modules offer the solution for field circuit turn-up and troubleshooting.

## Optical Transport Network Testing

With OTN deployments rapidly increasing, so does the need for smaller field-oriented OTN test equipment. The FTB-8120NGE/8130NGE Power Blazer modules offer OTN test capabilities for verifying compliance with ITU-T G.709 standards. The tests include:

- OTU1 (2.7 Gbit/s) and OTU2 (10.7 Gbit/s) bit rates
- Synchronous mapping of SONET/SDH signals within OTN as well as synchronous and asynchronous demapping
- Forward error correction (FEC) testing
- OTU, ODU (including ODU TCM), OPU layer alarms/errors generation and analysis
- OTU, ODU (including ODU TCM) trace messages
- Mux/demux of ODU1/ODU2 testing; generation of up to four ODU1 into a single ODU2 structure and transporting it over a single wavelength
- ODU multiplexing alarm-generation and analysis



Power Blazer modules support G.709 testing in either the FTB-200 Compact Platform or the FTB-400 Universal Test System.

## Next-Generation SONET/SDH Testing

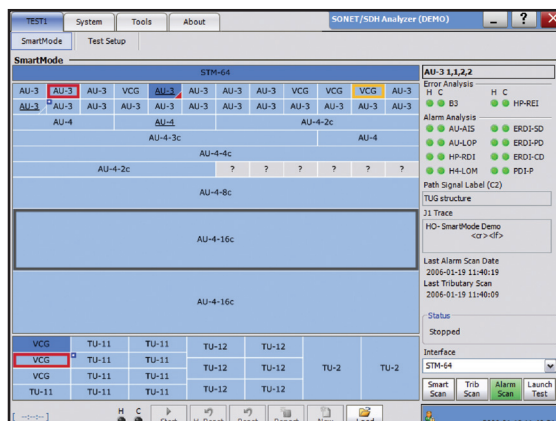
Available next-generation SONET/SDH test functionalities include generic framing procedure (GFP), virtual concatenation (VCAT) and link capacity adjustment scheme (LCAS). These options are available when the FTB-8120NGE/8130NGE are installed in the FTB-400 platform.

GFP	VCAT	LCAS
<ul style="list-style-type: none"> <li>■ Generation and analysis of frame types (client management/client data)</li> <li>■ Alarm/error generation and monitoring</li> <li>■ Overhead manipulation and monitoring</li> <li>■ Transmission and reception statistics monitoring</li> <li>■ Supported over contiguous or VCAT containers</li> </ul>	<ul style="list-style-type: none"> <li>■ High-order and low-order VCAT support</li> <li>■ Simultaneous manipulation and monitoring of each member</li> <li>■ Alarm/error generation and monitoring</li> <li>■ Sequence-indicator manipulation and processing</li> <li>■ Group-summary monitoring</li> <li>■ Differential delay analysis and insertion</li> </ul>	<ul style="list-style-type: none"> <li>■ Emulation and analysis of LCAS protocol (Automatic and Manual modes)</li> <li>■ Source and sink state machines control and monitoring</li> <li>■ Real-time generation and monitoring of LCAS control fields</li> <li>■ Real-time insertion and monitoring of LCAS alarms/errors</li> </ul>

## SmartMode: Real-Time Signal Structure Discovery and Monitoring

EXFO's FTB-8120NGE/8130NGE Power Blazer modules support a unique feature called SmartMode. This provides users with full visibility of all high-order (STS/AU) and low-order (VT/TU) mixed mappings within the incoming SONET/SDH/OTN test signal.

SmartMode automatically discovers the signal structure of the OC-n/STM-n line including mixed mappings and virtual concatenation (VCAT) members. In addition to this in-depth multichannel visibility, SmartMode performs real-time monitoring of all discovered high-order paths and user-selected low-order paths simultaneously, providing users with the industry's most powerful SONET/SDH/OTN multichannel monitoring and troubleshooting solution. Real-time monitoring allows users to easily isolate network faults, saving valuable time and minimizing service disruption. SmartMode also provides one-touch test case start, allowing users to quickly configure a desired test path and SmartMode specific reporting.



■ FTB-8120NGE/8130NGE SmartMode: multichannel signal discovery with real-time alarm scan (shown in the FTB-400 user interface).

# Ethernet Performance Validation and Reliability

EXFO's FTB-8120NGE/8130NGE Power Blazers offer a wide range of Ethernet test functions aimed at performance validation and reliability testing.

## Interfaces

These modules support multiple Ethernet interfaces, both electrical and optical:

ELECTRICAL	OPTICAL
<ul style="list-style-type: none"> <li>■ 10 Mbit/s</li> <li>■ 100 Mbit/s</li> <li>■ 1000 Mbit/s</li> </ul>	<ul style="list-style-type: none"> <li>■ 100 Mbit/s</li> <li>■ 1000 Mbit/s (GigE)</li> <li>■ 10 Gbit/s (10 GigE)—FTB-8130NGE only</li> </ul>

## Applications

The FTB-8120NGE/8130NGE Power Blazer modules deliver the features required to perform Ethernet service acceptance testing, namely RFC 2544 and BER testing.

### RFC 2544 Testing

In cases where the Ethernet service is delivered via switched transport, the RFC 2544 measurements provide a baseline for service providers to define SLAs with their customers. They enable service providers to validate the quality of service (QoS) delivered and can provide them with a tool to create value-added services that can be measured and demonstrated to customers. For example, these tests provide performance statistics and commissioning verification for virtual LANs (VLANs), virtual private networks (VPNs) and transparent LAN services (TLS), all of which use Ethernet as an access technology.

The FTB-8120NGE/8130NGE Power Blazer modules come with a complete set of RFC 2544 test capabilities, including:

- Throughput testing
- Burst (back-to-back) testing
- Frame loss analysis
- Latency measurement

### BER Testing

Because the transparent transport of Ethernet services over physical media is becoming common, Ethernet is increasingly carried across a variety of layer 1 media over longer distances. This creates a growing need for the certification of Ethernet transport on a bit-per-bit basis, which can be done using bit-error-rate testing (BERT).

BERT uses a pseudo-random binary sequence (PRBS) encapsulated into an Ethernet frame, making it possible to go from a frame-based error measurement to a bit-error-rate measurement. This provides the bit-per-bit error count accuracy required for the acceptance testing of physical-medium transport systems.

In addition to BER testing, the FTB-8120NGE/8130NGE Power Blazer modules also provide service disruption time (SDT) measurements.

## Dual Test Set

The dual test set configuration allows the user to test asymmetrically with two end ports and two test sets while being in direct control of only one test set. Two test sets are required for local/remote testing, also known as head-to-head testing. The user operates one

test set, designated as the "local test set", which controls the other, designated as the "remote test set".

This configuration enables the user to carry out RFC 2544 benchmark tests and achieve better visibility to the direction used (local to remote, remote to local, simultaneous) than by viewing roundtrip results. Configuring a test set in remote mode at the far end allows the user to detect all remote modules available for end-to-end RFC testing from the local unit, select one and sync up to it, then execute tests according to the desired direction with all results of the far end being transmitted and shown on the near end.

## Ethernet and IP QoS testing

Data services are making a significant shift toward supporting a variety of applications on the same network. This shift has fuelled the need for QoS testing to ensure the condition and reliability of services. By providing the ability to configure different Ethernet and IP QoS parameters such as VLAN ID (802.1Q), VLAN priority (802.1p), VLAN stacking (802.1ad Q-in-Q), ToS and DSCP on multiple streams, the FTB-8120NGE/8130NGE Power Blazer modules allow service providers to simulate and qualify different types of applications running over their Ethernet network. The frame analysis feature enables multi-stream traffic generation and analysis as well as packet-jitter measurement (RFC 3393) and out-of-sequence testing. These measurements let service providers efficiently benchmark transport networks when it comes to Ethernet services, carrying multiple applications such as triple play offerings (voice, video and data).

### IP Test Tools

The FTB-8120NGE/8130NGE Power Blazer modules provide the Ping and traceroute tools to execute connectivity tests at the IP layer.



■ Dual-test-set configuration (arrows show direction of traffic).



## Fibre Channel Network Integrity Testing

EXFO's FTB-8120NGE/8130NGE Power Blazer modules also allow comprehensive testing capabilities for Fibre Channel network deployment.

### Interfaces

These modules support multiple Fibre Channel interfaces:

INTERFACE	RATE (Gbit/s)
1x	1.0625
2x	2.125
4x	4.25
10x	10.51875

### Applications

Since most SANs cover large distances and Fibre Channel has stringent performance attributes that must be respected, it is imperative to test at each phase of network deployment to ensure appropriate service levels. EXFO's FTB-8120NGE/8130NGE Fibre Channel option provides full wire-speed traffic generation at FC-0, FC-1 and FC-2 logical layers, allowing BER testing for link integrity measurements. Latency, buffer-to-buffer credit measurements for optimization, and login capabilities that enable end-to-end Fibre Channel network testing features are also supported.

### Buffer-to-Buffer Credit Estimation

Flow control engine is the Fibre Channel buffer credit mechanism. This is a crucial configuration parameter for optimal network performance. Usually, network administrators calculate the value by taking the traveled distance and the data rate into consideration; however, since latency issues are not considered, poor accuracy is to be expected. The FTB-8120NGE/8130NGE modules are capable of estimating buffer-credit values with respect to latency by calculating the distance according to the round-trip latency time.

## Unsurpassed Configuration and Operational Flexibility

### Multiplatform Support and Versatility

The FTB-8120NGE and FTB-8130NGE modules share a unique architecture that allows them to be supported and interchangeable on both the FTB-400 Universal Test System and the FTB-200 Compact Platform. This cross-platform support provides users with added flexibility to select the platform that best suits their testing needs. EXFO is the first and only test solution provider to offer this versatility, delivering single to multi-application test solutions with the same hardware module, which in turn dramatically reduces capital expenditures.

Once inserted into the FTB-200 Compact Platform, the FTB-8120NGE/FTB-8130NGE Power Blazer modules deliver the industry's most compact integrated SONET/SDH, Ethernet and Fibre Channel solution focused on field testing applications. Available with powerful options—high-precision power meter, visual fault locator and fiber inspection probe—the FTB-200 provides all the critical test tools required for day-to-day activities, eliminating the need to carry and manage multiple test sets.

The FTB-400 platform configuration—used with either the four-slot (GP-404) or eight-slot (GP-408) module receptacle—provides users with an all-in-one solution supporting a mix of SONET/SDH/OTN, Ethernet, Fibre Channel and optical-layer test modules, making it the industry's first truly integrated network testing platform. The resulting modularity enables users to upgrade their systems in the field according to their testing needs. This multitechnology test platform is the ideal solution for field, central office and lab applications.

### Product Option Flexibility

With the FTB-8120NGE and FTB-8130NGE Power Blazer modules, users can purchase one or more next-generation options (e.g., GFP, VCAT, LCAS) and/or OTN options (OTU1, OTU2) via field upgrades to customize their configuration as new needs arise. This avoids having to perform complete hardware and/or platform retrofits, therefore significantly decreasing capital and training expenses.

In terms of Ethernet support, the FTB-8120NGE comes standard with Ethernet testing capabilities up to GigE rate. On the FTB-8130NGE, users can select up to Gigabit Ethernet support or 10 Gigabit Ethernet support, or both.

Also, EXFO's FTB-8120NGE supports 1x/2x/4x Fibre Channel testing options, while the FTB-8130NGE supports 1x/2x/4x/10x Fibre Channel testing options.



# SONET/SDH Electrical Interfaces

The following section provides detailed information on all supported SONET/SDH electrical interfaces.

	DS1	E1/2M	E2/8M	E3/34M	DS3/45M	STS-1e/STM-0e/52M	E4/140M	STS-3e/STM-1e/155M			
Tx Pulse Amplitude	2.4 to 3.6 V	3.0 V	2.37 V	2.37 V	1.0 ± 0.1 V	0.36 to 0.85 V	1.0 ± 0.1 Vpp	0.5 V			
Tx Pulse Mask	GR-499 Figure 9.5	G.703 Figure 15	G.703 Figure 15	G.703 Figure 16	G.703 Figure 17	DS-3 GR-499 Figure 9-8	45-M G.703 Figure 14	GR-253 Figure 4-10/4-11	G.703 Figure 18/19	STS-3e GR-253 Figure 4-12/4-13/4-14	STM-1e/155M G.703 Figure 4-14/22, 23
Tx LBO Preamplification	Power dBdsx +0.6 dBdsx (0-133 ft) +1.2 dBdsx (133-266 ft) +1.8 dBdsx (266-399 ft) +2.4 dBdsx (399-533 ft) +3.0 dBdsx (533-655 ft)					0 to 225 ft 225 to 450 ft	0 to 225 ft 255 to 450 ft	0 to 225 ft			
Cable Simulation	Power dBdsx -22.5 dBdsx -15.0 dBdsx -7.5 dBdsx 0 dBdsx					450 to 900 (927) ft	450 to 900 (927) ft				
Rx Level Sensitivity	For 772 kHz: TERM: ≤ 26 dB (cable loss only) at 0 dBdsx Tx DSX-MON: ≤ 26 dB (20 dB resistive loss + cable loss ≤ 6 dB) Bridge: ≤ 6 dB (cable loss only) Note: measurement units = dBdsx	For 1024 kHz: TERM: ≤ 6 dB (cable loss only) MON: ≤ 26 dB (20 dB resistive loss + cable loss ≤ 6 dB) Bridge: ≤ 6 dB (cable loss only) Note: measurement units = dBm	For 1024 kHz: TERM: ≤ 6 dB (cable loss only) MON: ≤ 26 dB (20 dB resistive loss + cable loss ≤ 6 dB) Bridge: ≤ 6 dB (cable loss only) Note: measurement units = dBm	For 4224 kHz: TERM: ≤ 6 dB (cable loss only) MON: ≤ 26 dB (20 dB resistive loss + cable loss ≤ 6 dB) Note: measurement units = dBm	For 17,184 MHz: TERM: ≤ 12 dB (coaxial cable loss only) MON: ≤ 26 dB (20 dB resistive loss + cable loss ≤ 6 dB) Note: measurement units = dBm	For 22,368 MHz: TERM: ≤ 10 dB (cable loss only) DSX-MON: ≤ 26.5 dB (21.5 dB resistive loss + cable loss ≤ 5 dB) Note: measurement units = dBm	For 25.92 MHz: TERM: ≤ 10 dB (cable loss only) MON: ≤ 25 dB (20 dB resistive loss + cable loss ≤ 6 dB) Note: measurement units = dBm	For 70 MHz: TERM: ≤ 12 dB (coaxial cable loss only) MON: ≤ 26 dB (20 dB resistive loss + cable loss ≤ 6 dB) Note: measurement units = dBm	For 78 MHz: TERM: ≤ 12.7 dB (coaxial cable loss only) MON: ≤ 26 dB (20 dB resistive loss + cable loss ≤ 6 dB) Note: measurement units = dBm		
Transmit Bit Rate	1.544 Mbit/s ± 4.6 ppm	2.048 Mbit/s ± 4.6 ppm	2.048 Mbit/s ± 4.6 ppm	8.448 Mbit/s ± 4.6 ppm	34.368 Mbit/s ± 4.6 ppm	44.736 Mbit/s ± 4.6 ppm	51.84 Mbit/s ± 4.6 ppm	139.264 Mbit/s ± 4.6 ppm	155.52 Mbit/s ± 4.6 ppm		
Receive Bit Rate	1.544 Mbit/s ± 140 ppm	2.048 Mbit/s ± 100 ppm	2.048 Mbit/s ± 100 ppm	8.448 Mbit/s ± 100 ppm	34.368 Mbit/s ± 100 ppm	44.736 Mbit/s ± 100 ppm	51.84 Mbit/s ± 100 ppm	139.264 Mbit/s ± 100 ppm	155.52 Mbit/s ± 100 ppm		
Measurement Accuracy	Frequency Electrical Power	±4.6 ppm DSX range: ±1.0 dB DSX-MON range: ±2.0 dB	±4.6 ppm NORMAL: ±1.0 dB MONITOR: ±2.0 dB	±4.6 ppm NORMAL: ±1.0 dB MONITOR: ±2.0 dB	±4.6 ppm NORMAL: ±1.0 dB MONITOR: ±2.0 dB	±4.6 ppm DSX range: ±1.0 dB DSX-MON range: ±2.0 dB	±4.6 ppm DSX range: ±1.0 dB DSX-MON range: ±2.0 dB	±4.6 ppm NORMAL: ±1.0 dB MONITOR: ±2.0 dB	±4.6 ppm NORMAL: ±1.0 dB MONITOR: ±2.0 dB		
Peak-to-Peak Voltage	±10% down to 500 mVpp	±10% down to 500 mVpp	±10% down to 500 mVpp	±10% down to 400 mVpp	±10% down to 200 mVpp	±10% down to 200 mVpp	±10% down to 200 mVpp	±10% down to 200 mVpp	±10% down to 200 mVpp		
Frequency Offset Generation	1.544 Mbit/s ± 140 ppm	2.048 Mbit/s ± 70 ppm	2.048 Mbit/s ± 70 ppm	8.448 Mbit/s ± 50 ppm	34.368 Mbit/s ± 50 ppm	44.736 Mbit/s ± 50 ppm	51.84 Mbit/s ± 50 ppm	139.264 Mbit/s ± 50 ppm	155.52 Mbit/s ± 50 ppm		
Intrinsic Jitter (Tx)	ANSI T1.403 section 6.3 GR-499 section 7.3	G.823 section 5.1	G.823 section 5.1	G.823 section 5.1	G.823 section 5.1 G.751 section 2.3	GR-449 section 7.3 (categories I and II)	GR-253 section 5.6.2.2 (category II)	G.823 section 5.1	G.825 section 5.1 GR-253 section 5.6.2.2		
Input Jitter Tolerance	AT&T PUB 62411 GR-499 section 7.3	G.823 section 7.1	G.823 section 7.1	G.823 section 7.1	G.823 section 7.1	GR-449 section 7.3 (categories I and II)	GR-253 section 5.6.2.2 (category II)	G.823 section 7.1 G.751 section 3.3	G.825 section 5.2 GR-253 section 5.6.2.3		
Line Coding	AMI and B8ZS	AMI and HDB3	AMI and HDB3	HDB3	HDB3	B3ZS	B3ZS	CMI	CMI		
Input Impedance (Resistive Termination)	100 ohms ± 5%, balanced	120 ohms ± 5%, balanced	75 ohms ± 5%, unbalanced	75 ohms ± 5%, unbalanced	75 ohms ± 5%, unbalanced	75 ohms ± 5%, unbalanced	75 ohms ± 5%, unbalanced	75 ohms ± 10%, unbalanced	75 ohms ± 5%, unbalanced		
Connector Type	BANTAM and RJ-48C	BANTAM and RJ-48C	BNC	BNC	BNC	BNC	BNC	BNC	BNC		

## SYNCHRONISATION INTERFACES

	External Clock DS1/1.5M	External Clock E1/2M	External Clock E1/2M	Trigger 2 MHz
Tx Pulse Amplitude	2.4 to 3.6 V	3.0 V	2.37 V	0.75 to 1.5 V
Tx Pulse Mask	GR-499 figure 9.5	G.703 figure 15	G.703 figure 15	G.703 figure 20
Tx LBO Preamplification	Typical power dBdsx +0.6 dBdsx (0-133 ft) +1.2 dBdsx (133-266 ft) +1.8 dBdsx (266-399 ft) +2.4 dBdsx (399-533 ft) +3.0 dBdsx (533-655 ft)			
Rx Level Sensitivity	TERM: ≤ 6 dB (cable loss only) (at 772 kHz for T1) DSX-MON: ≤ 26 dB (20 dB resistive loss + cable loss ≤ 6 dB) Bridge: ≤ 6 dB (cable loss only)	TERM: ≤ 6 dB (cable loss only) MON: ≤ 26 dB (20 dB resistive loss + cable loss ≤ 6 dB) Bridge: ≤ 6 dB (cable loss only)	TERM: ≤ 6 dB (cable loss only) MON: ≤ 26 dB (resistive loss + cable loss ≤ 6 dB) Bridge: ≤ 6 dB (cable loss only)	≤ 6 dB (cable loss only)
Transmission Bit Rate	1.544 Mbit/s ± 4.6 ppm	2.048 Mbit/s ± 4.6 ppm	2.048 Mbit/s ± 4.6 ppm	
Reception Bit Rate	1.544 Mbit/s ± 50 ppm	2.048 Mbit/s ± 50 ppm	2.048 Mbit/s ± 50 ppm	
Intrinsic Jitter (Tx)	ANSI T1.403 section 6.3 GR-499 section 7.3	G.823 section 6.1	G.823 section 6.1	G.703 table 11
Input Jitter Tolerance	AT&T PUB 62411 GR-499 SECTION 7.3	G.823 section 7.2 G.813	G.823 section 7.2 G.813	
Line Coding	AMI and B8ZS	AMI and HDB3	AMI and HDB3	
Input Impedance (Resistive Termination)	75 ohms ± 5%, unbalanced	75 ohms ± 5%, unbalanced	75 ohms ± 5%, unbalanced	75 ohms ± 5%, unbalanced
Connector Type	BNC <sup>a</sup>	BNC <sup>a</sup>	BNC	BNC

### NOTES

- Adaptation cable required for BANTAM.
- SFP/XFP transceivers comply with IEC 60825 and 21 CFR 1040.10 (except for deviations pursuant to Laser Notice 50, dated July, 2001), for Class 1 or 1M lasers.

## ETHERNET ADD/DROP INTERFACE

### 10/100/1000 Base-T (Add/Drop)

Compliance	10 Mbit/s: IEEE 802.3 section 14
	100 Mbit/s: IEEE 802.3 section 25
	1000 Mbit/s: IEEE 802.3 section 40

### Connector

RJ-45 Ethernet

### Gigabit Ethernet (Add/Drop)

Interface/connector SFP/Dual LC

Compliance 1000 Mbit/s: IEEE 802.3 Section 40<sup>b</sup>

Wavelength/Max Tx level 850, 1310 nm/-3 dBm

1550 nm/+5 dBm

### Ref-Out Interface

Parameter Value

Tx pulse amplitude 600 ± 150 mVpp

Transmission frequency

Clock divider = 16 622.08 MHz

Clock divider = 32 311.04 MHz

Clock divider = 64 155.52 MHz

Output configuration AC coupled

Load impedance 50 ohms

Maximum cable length 3 meters

Connector Type SMA

SONET/SDH/10 GigE WAN 10 GigE LAN

644.53 MHz

322.266 MHz

161.133 MHz

# SONET/SDH Optical Interfaces

The following section provides detailed information on all supported SONET/SDH optical interfaces.

	OC-3/STM-1c				OC-12/STM-4c				OC-48/STM-16c/OTU1				OC-192/STM-64c/OTU2				
	15 km; 1310 nm	40 km; 1310 nm	40 km; 1550 nm	80 km; 1550 nm	15 km; 1310 nm	40 km; 1310 nm	40 km; 1550 nm	80 km; 1550 nm	15 km; 1310 nm	40 km; 1310 nm	40 km; 1550 nm	80 km; 1550 nm	10 km; 1310 nm	40 km; 1550 nm	80 km; 1550 nm		
Level Tx	-5 to 0 dBm	-2 to +3 dBm	-5 to 0 dBm	-2 to +3 dBm	-5 to 0 dBm	-2 to +3 dBm	-5 to 0 dBm	-2 to +3 dBm	-5 to 0 dBm	-2 to +3 dBm	-5 to 0 dBm	-2 to +3 dBm	-6 to -1 dBm	-1 to +2 dBm	0 to +4 dBm		
Rx Operating Range	-23 to -10 dBm	-30 to -15 dBm	-23 to -10 dBm	-30 to -15 dBm	-22 to 0 dBm	-27 to -9 dBm	-22 to 0 dBm	-29 to -9 dBm	-18 to 0 dBm	-27 to -9 dBm	-18 to 0 dBm	-28 to -9 dBm	-11 to -1 dBm	-14 to -1 dBm	-24 to -9 dBm		
Transmit Bit Rate	155.52 Mbit/s ± 4.6 ppm				622.08 Mbit/s ± 4.6 ppm				2.48832 Gbit/s ± 4.6 ppm 2.66606 Gbit/s ± 4.6 ppm (OTU1)				9.95328 Gbit/s ± 4.6 ppm 10.70922 Gbit/s ± 4.6 ppm (OTU2)				
Receive Bit Rate	155.52 Mbit/s ± 100 ppm				622.08 Mbit/s ± 100 ppm				2.48832 Gbit/s ± 100 ppm 2.66606 Gbit/s ± 100 ppm (OTU1)				9.95328 Gbit/s ± 100 ppm 10.70922 Gbit/s ± 100 ppm (OTU2)				
Operational Wavelength Range	1261 to 1360 nm	1263 to 1360 nm	1430 to 1580 nm	1480 to 1580 nm	1270 to 1360 nm	1280 to 1335 nm	1430 to 1580 nm	1480 to 1580 nm	1260 to 1360 nm	1280 to 1335 nm	1430 to 1580 nm	1500 to 1580 nm	1290 to 1330 nm	1530 to 1565 nm	1530 to 1565 nm		
Spectral Width	1 nm (-20 dB)				1 nm (-20 dB)				1 nm (-20 dB)				1 nm (-20 dB)				
Frequency Offset Generation	155.52 Mbit/s ± 50 ppm				622.08 Mbit/s ± 50 ppm				2.48832 Gbit/s ± 50 ppm				9.95328 Gbit/s ± 50 ppm				
Measurement Accuracy	Frequency	± 4.6 ppm			± 4.6 ppm			± 4.6 ppm			± 4.6 ppm			Optical Power	± 2 dB		
Maximum Rx before Damage <sup>a</sup>	+ 3 dBm				+ 3 dBm				+ 3 dBm				+ 3 dBm				
Jitter Compliance	GR-253 (SONET) G.958 (SDH)				GR-253 (SONET) G.958 (SDH)				GR-253 (SONET) G.958 (SDH)				GR-253 (SONET) G.825 (SDH)				
Line Coding	NRZ				NRZ				NRZ				NRZ				
Eye Safety	SFP/XFP transceivers comply with IEC 60825 and 21 CFR 1040.10 (except for deviations pursuant to Laser Notice No. 50, dated July 2001), for Class 1 or 1M lasers.																
Connector <sup>b</sup>	Dual LC				Dual LC				Dual LC				Dual LC				
Transceiver Type <sup>c</sup>	SFP				SFP				SFP				XFP				

**NOTES**

- a. In order not to exceed the maximum receiver power level before damage, an attenuator must be used.
- b. External adaptors can be used for other types of connectors. For example FC/PC.
- c. SFP/XFP compliance: The FTB-8120NGE/8130NGE selected SFP/XFP shall meet the requirements stated in the "Small Form-Factor Pluggable (SFP) Transceiver Multisource Agreement (MSA)".  
The FTB-8120NGE/8130NGE selected SFP/XFP shall meet the requirements stated in the "Specification for Diagnostic Monitoring Interface for Optical Xcvrs".

# SONET/SDH Functional Specifications

SONET AND DS <sub>n</sub>		SDH AND PDH	
<b>Optical interfaces</b>	OC-3, OC-12, OC-48, OC-192	<b>Optical interfaces</b>	STM-1, STM-4, STM-16, STM-64
Available wavelengths (nm)	1310, 1550	Available wavelengths (nm)	1310, 1550
<b>Electrical interfaces</b>	DS1, DS3, STS-1e, STS-3e	<b>Electrical interfaces<sup>a</sup></b>	1.5M (DS1), 2M (E1), 8M (E2), 34M (E3), 45M (DS3), 140M (E4), STM-0e, STM-1e
DS1 framing	Unframed, SF, ESF	2M framing	Unframed, PCM30, PCM31, PCM30 CRC-4, PCM31 CRC-4
DS3 framing	Unframed, M13, C-bit parity	8M, 34M, 140M framing	Unframed, framed
Clocking	Internal, loop-timed, external (BITS), inter-module	Clocking	Internal, loop-timed, external (MTS/SETS), 2 MHz, inter-module
<b>Mappings<sup>b</sup></b>		<b>Mappings<sup>b</sup></b>	
VT1.5	Bulk, DS1, GFP <sup>c</sup>	TU-11-AU-3, TU-11-AU-4	Bulk, 1.5M, GFP <sup>c</sup>
VT2	Bulk, E1, GFP <sup>c</sup>	TU-12-AU-3, TU-12-AU-4	Bulk, 1.5M, 2M, GFP <sup>c</sup>
VT6	Bulk, GFP <sup>c</sup>	TU-3-AU-4	Bulk, 34M, 45M, GFP <sup>c</sup>
STS-1 SPE	Bulk, DS3, GFP <sup>c</sup>	TU-2-AU-3, TU-2-AU-4	Bulk, GFP <sup>c</sup>
STS-3c/6c/9c/12c/24c/48c/96c/192c, SPE	Bulk, GFP <sup>c</sup>	AU-4	Bulk, 140M, GFP <sup>c</sup>
SONET overhead analysis and manipulation	A1, A2, J0, E1, F1, D1-D12, K1, K2, S1, M0, E2, J1, E2, J1, C2, C2, G1, F2, H4, Z3, Z4, Z5, N1, N2	AU-4-2c/3c/4c/8c/16c/32c/64c	Bulk, GFP <sup>c</sup>
<b>Error insertion</b>		SDH overhead analysis and manipulation	A1, A2, J0, E1, F1, D1-D12, K1, K2, S1, M0, G1, F2, F3, K3, N1, N2
DS1	Framing bit, BPV, CRC-6, bit error	<b>Error insertion</b>	
DS3	BPV, C-bit, F-bit, P-bit, FEBE, bit error	E1 (2M)	Bit error, FAS, CV, CRC-4, E-bit
STS-1e, STS-3e	Section BIP (B1), line BIP (B2), path BIP (B3), BIP-2, REI-L, REI-P, REI-V, BPV, bit error	E2 (8M), E3 (34M), E4 (140M)	Bit error, FAS, CV
OC-3, OC-12, OC-48, OC-192	Section BIP (B1), line BIP (B2), path BIP (B3), BIP-2, REI-L, REI-P, REI-V, FAS, bit error	STM-0e, STM-1e	RS-BIP (B1), MS-BIP (B2), HP-BIP (B3), MS-REI, HP-REI, LP-BIP-2, LP-REI, bit error, CV
<b>Error measurement</b>		STM-1, STM-4, STM-16, STM-64	RS-BIP (B1), MS-BIP (B2), HP-BIP (B3), MS-REI, HP-REI, LP-BIP-2, LP-REI, FAS, bit error
DS1	Framing bit, BPV, CRC-6, excess zeros, bit error	<b>Error measurement</b>	
DS3	BPV, C-bit, F-bit, P-bit, FEBE, bit error	E1 (2M)	Bit error, FAS, CV, CRC-4, E-bit
STS-1e, STS-3e	Section BIP (B1), line BIP (B2), path BIP (B3), BIP-2, REI-L, REI-P, REI-V, BPV, bit error	E2 (8M), E3 (34M), E4 (140M)	Bit error, FAS, CV
OC-3, OC-12, OC-48, OC-192	Section BIP (B1), line BIP (B2), path BIP (B3), BIP-2, REI-L, REI-P, REI-V, FAS, bit error	STM-0e, STM-1e	RS-BIP (B1), MS-BIP (B2), HP-BIP (B3), MS-REI, HP-REI, LP-BIP-2, LP-REI, bit error, CV
<b>Alarm insertion</b>		STM-1, STM-4, STM-16, STM-64	RS-BIP (B1), MS-BIP (B2), HP-BIP (B3), MS-REI, HP-REI, LP-BIP-2, LP-REI, FAS, bit error
DS1	LOS, RAI, AIS, OOF, pattern loss	<b>Alarm insertion</b>	
DS3	LOS, RDI, AIS, OOF, DS3 idle, pattern loss	E1 (2M)	LOS, LOS Mframe, LOS CRC Mframe, LOF, AIS, TS16 AIS, RAI, RAI Mframe, pattern loss
STS-1e, STS-3e, OC-3, OC-12, OC-48, OC-192	LOS, LOF, SEF, AIS-L, RDI-L, AIS-P, LOP-P, LOM, PDI-P, RDI-P, ERDI-PCD, ERDI-PPD, ERDI-PSD, UNEQ-P, AIS-V, LOP-V, RDI-V, ERDI-VCD, ERDI-VPD, ERDI-VSD, RFI-V, UNEQ-V, pattern loss	E2 (8M), E3 (34M), E4 (140M)	LOS, LOF, RAI, AIS, pattern loss
<b>Alarm detection</b>		STM-0e, STM-1e, STM-1, STM-4, STM-16, STM-64	LOS, LOF, OOF, MS-AIS, MS-RDI, AU-AIS, AU-LOP, H4-LOM, HP-PDI, ERDI-PSD, ERDI-PCD, ERDI-PPD, HP-UNEQ, TU-AIS, LP-RFI, LP-RDI, ERDI-VCD, ERDI-VPD, ERDI-VSD, LP-RFI, LP-UNEQ, pattern loss
DS1	LOS, loss of clock (LOC), RAI, AIS, OOF, pattern loss	<b>Alarm detection</b>	
DS3	LOS, LOC, RDI, AIS, OOF, DS3 idle, pattern loss	E1 (2M)	LOS, LOS Mframe, LOS CRC Mframe, LOC, LOF, AIS, TS16 AIS, RAI, RAI Mframe, pattern loss
STS-1e, STS-3e, OC-3, OC-12, OC-48, OC-192	LOS, LOC, LOF, SEF, TIM-S, AIS-L, RDI-L, AIS-P, LOP-P, LOM, PDI-P, RDI-P, ERDI-PCD, ERDI-PPD, ERDI-PSD, PLM/SLM-P, UNEQ-P, TIM-P, AIS-V, LOP-V, RDI-V, ERDI-VCD, ERDI-VCD, ERDI-VPD, ERDI-VSD, RFI-V, UNEQ-V, TIM-V, PLM/SLM-V, pattern loss	E2 (8M), E3 (34M), E4 (140M)	LOS, LOC, LOF, RAI, AIS, pattern loss
		STM-0e, STM-1e, STM-1, STM-4, STM-16, STM-64	LOS, LOF, LOC, OOF, RS-TIM, MS-AIS, MS-RDI, AU-AIS, AU-LOP, H4-LOM, HP-RDI, ERDI-PSD, ERDI-PCD, ERDI-PPD, HP-PLM/SLM, HP-UNEQ, HP-TIM, TU-AIS, LP-RFI, LP-RDI, ERDI-VPD, ERDI-VSD, LP-RFI, LP-UNEQ, LP-TIM, LP-PLM/SLM, pattern loss
		<i>Frequency alarm on all supported interfaces.</i>	
<b>Patterns</b>		<b>Patterns</b>	
DS0	2E9-1, 2E11-1, 2E20-1, 1100, 1010, 1111, 0000, 1-in-8, 1-in-16, 3-in-24, 32 bit programmable (inverted or non-inverted), bit errors	E0 (64K)	2E9-1, 2E11-1, 2E20-1, 1100, 1010, 1111, 0000, 1-in-8, 1-in-16, 3-in-24, 32 bit programmable (inverted or non-inverted), bit errors
DS1	2E9-1, 2E11-1, 2E15-1, 2E20-1, 2E23-1, 2E31-1, 1100, 1010, 1111, 0000, QRSS, 1-in-8, 1-in-16, 3-in-24, 32 bit programmable (inverted or non-inverted), T1-DALY, 55-Octet, bit errors	E1 (2M)	2E9-1, 2E11-1, 2E15-1, 2E20-1, 2E23-1, 2E31-1, 1100, 1010, 1111, 0000, 1-in-8, 1-in-16, 3-in-24, 32 bit programmable (inverted or non-inverted), bit errors
DS3	2E9-1, 2E11-1, 2E15-1, 2E20-1, 2E23-1, 2E31-1, 1100, 1010, 1111, 0000, 1-in-8, 1-in-16, 3-in-24 <sup>d</sup> , 32 bit programmable (inverted or non-inverted), bit errors	E2 (8M), E3 (34M), E4 (140M)	2E9-1, 2E11-1, 2E15-1, 2E20-1, 2E23-1, 2E31-1, 1100, 1010, 1111, 0000, 1-in-8, 1-in-16, 3-in-24 <sup>d</sup> , 32 bit programmable (inverted or non-inverted), bit errors
VT1.5/2/6	2E9-1, 2E11-1, 2E15-1, 2E20-1, 2E23-1, 2E31-1, 1100, 1010, 1111, 0000, QRSS, 1-in-8, 1-in-16, 32 bit programmable (inverted or non-inverted), bit errors	TU-11/12/2/3	2E9-1, 2E11-1, 2E15-1, 2E20-1, 2E23-1, 2E31-1, 1100, 1010, 1111, 0000, 1-in-8, 1-in-16, 32 bit programmable (inverted or non-inverted), bit errors
STS-1, STS-3c/12c/48c/192c	2E9-1, 2E11-1, 2E15-1, 2E20-1, 2E23-1, 2E31-1, 1100, 1010, 1111, 0000, 1-in-8, 1-in-16, 32 bit programmable (inverted or non-inverted), bit errors	AU-3/AU-4/AU-4c/16c/64c	2E9-1, 2E11-1, 2E15-1, 2E20-1, 2E23-1, 2E31-1, 1100, 1010, 1111, 0000, 1-in-8, 1-in-16, 32 bit programmable (inverted or non-inverted), bit errors
		<i>Pattern loss and bit error generation and analysis supported on all patterns.</i>	

**NOTES**

- a. 1.5M (DS1) and 45M (DS3) interfaces described under SONET and DS<sub>n</sub> column.
- b. VCAT mappings are also available. Please refer to the VCAT section of this document for details.
- c. GFP supported only with purchase of GFP-F option.
- d. Not supported for E4 (140M).



# SONET/SDH Functional Specifications (Cont'd)

NEXT-GEN SONET		NEXT-GEN SDH	
<b>Generic framing procedure (GFP)</b>		<b>Generic framing procedure (GFP)</b>	
Standards compliance	As per ITU-T G.7041, and ANSI T1.105.02	Standards compliance	As per ITU-T G.7041, G.707, and ANSI T1.105.02
Payload	PRBS pattern; Ethernet	Payload	PRBS pattern; Ethernet
Ethernet add/drop	Ability to add/drop Ethernet payload to/from GFP mapped OC-n/OTU signal	Ethernet add/drop	Ability to add/drop Ethernet payload to/from GFP mapped STM-n/OTU signal
Error insertion	Correctable core HEC, uncorrectable core HEC, correctable type HEC, uncorrectable type HEC, correctable extension HEC, uncorrectable extension HEC, payload FCS	Error insertion	Correctable core HEC, uncorrectable core HEC, correctable type HEC, uncorrectable type HEC, correctable extension HEC, uncorrectable extension HEC, payload FCS
Error monitoring	Correctable core HEC, uncorrectable core HEC, correctable type HEC, uncorrectable type HEC, correctable extension HEC, uncorrectable extension HEC, payload FCS	Error monitoring	Correctable core HEC, uncorrectable core HEC, correctable type HEC, uncorrectable type HEC, correctable extension HEC, uncorrectable extension HEC, payload FCS
Alarm insertion	Loss of client signal (LOCS) and loss of client character synchronization (LOCCS) with configurable time interval between 10 and 1200 ms, and loss of frame delineation (LFD)	Alarm insertion	Loss of client signal (LOCS) and loss of client character synchronization (LOCCS) with configurable time interval between 10 and 1200 ms, and loss of frame delineation (LFD)
Alarm monitoring	Loss of client signal (LOCS), loss of client character synchronization (LOCCS) and loss of frame delineation (LFD)	Alarm monitoring	Loss of client signal (LOCS), loss of client character synchronization (LOCCS) and loss of frame delineation (LFD)
Statistics	Transmit: client data frames (including payload bytes), client management frames, total frames, idle frames, GFP bandwidth usage (%), GFP mapping efficiency (%) Receive: client data frames (including payload bytes), client management frames, total frames, idle (control) frames, reserved (control) frames, invalid frames, discarded frames, EXI mismatches, UPI mismatches, CID mismatches, GFP bandwidth usage (%), GFP mapping efficiency (%)	Statistics	Transmit: client data frames (including payload bytes), client management frames, total frames, idle frames, GFP bandwidth usage (%), GFP mapping efficiency (%) Receive: client data frames (including payload bytes), client management frames, total frames, idle (control) frames, reserved (control) frames, invalid frames, discarded frames, EXI mismatches, UPI mismatches, CID mismatches, GFP bandwidth usage (%), GFP mapping efficiency (%)
Header manipulation	PTI, PFI, EXI, UPI, CID and spare (extension header) fields	Header manipulation	PTI, PFI, EXI, UPI, CID and spare (extension header) fields
Header monitoring	PLI, PTI, PFI, EXI, UPI, CID, spare (extension header) fields, cHEC, tHEC, eHEC	Header monitoring	PLI, PTI, PFI, EXI, UPI, CID, spare (extension header) fields, cHEC, tHEC, eHEC
<b>Virtual concatenation (VCAT)</b>		<b>Virtual concatenation (VCAT)</b>	
Standards compliance	Supports high-order and low-order virtual concatenation as per ANSI T1.105	Standards compliance	Supports high-order and low-order virtual concatenation as per ITU G.707
Mappings	High-order STS-1-Xv (X = 1 to 21) STS-3-Xv (X = 1 to 7) Low-order VT1.5-Xv (X = 1 to 64) VT-2-Xv (X = 1 to 64)	Mappings	High-order VC-3-Xv (X = 1 to 21) VC-4-Xv (X = 1 to 7) Low-order VC-11-Xv (X = 1 to 64) VC-12-Xv (X = 1 to 64) VC-3-Xv in AU-4 (X = 1 to 21)
Alarm insertion	LOM, OOM1, OOM2, SQM VCAT and Path alarms can be generated independently on any member of a VCG	Alarm insertion	LOM, OOM1, OOM2, SQM VCAT and Path alarms can be generated independently on any member of a VCG
Alarm monitoring	LOM, OOM1, OOM2, SQM, LOA	Alarm monitoring	LOM, OOM1, OOM2, SQM, LOA
Differential delay	Analysis Range: 0 to 256 ms Display: numerical and graphical Insertion Range: 0 to 256 ms	Differential delay	Analysis Range: 0 to 256 ms Display: numerical and graphical Insertion Range: 0 to 256 ms
Sequence number manipulation and processing	Sequence range: 0 to 63 Sequence number monitoring: current AcSQ (accepted SQ) monitored against the ExSQ (expected SQ); SQM alarm raised on mismatch	Sequence number manipulation and processing	Sequence range: 0 to 63 Sequence number monitoring: current AcSQ (accepted SQ) monitored against the ExSQ (expected SQ); SQM alarm raised on mismatch

# SONET/SDH Functional Specifications (Cont'd)

## NEXT-GEN SONET/SDH (CONT'D)

### Link capacity adjustment scheme (LCAS)

Standards compliance	As per ITU G.7042; supported for both low-order and high-order VCAT groups
Test functions	<ul style="list-style-type: none"> <li>■ Emulation of source and sink state machines</li> <li>■ Automatic and manual control of source and sink state machines</li> <li>■ Independent overwrite capability at the source and sink for each member</li> <li>■ Automatic SQ management</li> </ul>
Source state machine control	<ul style="list-style-type: none"> <li>■ Add/remove member(s)</li> <li>■ Configure: RS-ACK timeout, remote DUT, PLCT threshold</li> <li>■ Statistics count: received RS-ACK, unexpected RS-ACK</li> <li>■ Error/alarm generation: CRC errors, group ID (GID) mismatch</li> <li>■ Error/alarm monitoring: loss of partial transport capacity, loss of total transport capacity, failure of protocol transmission, CRC errors, unexpected member status</li> </ul>
Sink state machine control	<ul style="list-style-type: none"> <li>■ Add/remove member(s)</li> <li>■ Configure Hold-Off and Wait-to-Restore timers, PLCR threshold</li> <li>■ Toggle RS-ACK</li> <li>■ Statistics count: transmitted RS-ACK</li> <li>■ Error/alarm generation: CRC errors, group ID (GID) mismatch</li> <li>■ Error/alarm monitoring: loss of partial transport capacity, loss of total transport capacity, failure of protocol reception, CRC errors, unexpected member status</li> </ul>

### OTN

Standards compliance	ITU-T G.709, ITU G.798, ITU G.872
Interfaces	OTU1 (2.7 Gbit/s) and OTU2 (10.7 Gbit/s)
Client types multiplexing <sup>a</sup>	All supported SONET/SDH mappings (including next-generation GFP, VCAT, LCAS), NULL, PRBS (2E31-1), ODU1 into OTU2

### OTU Layer

Errors	OTU-FAS, OTU-MFAS, OTU-BEI, OTU-BIP-8
Alarms	LOF, OOF, LOM, OOM, OTU-AIS, OTU-TIM, OTU-BDI, OTU-IAE, OTU-BIAE
Traces	64-bytes Trail Trace Identifier (TTI) as defined in ITU-T G.709

### ODU TCM Layer

Errors	TCMi-BIP-8, TCMi-BEI (i = 1 to 6)
Alarms	TCMi-AIS, TCMi-LTC, TCMi-OCI, TCMi-LCK, TCMi-TIM, TCMi-BDI, TCMi-IAE, TCMi-BIAE
Traces	64-bytes Trail Trace Identifier (TTI) as defined in ITU-T G.709

### ODU Layer

Errors	ODU-BIP-8, ODU-BEI
Alarms	ODU-AIS, ODU-OCI, ODU-LCK, ODU-TIM, ODU-BDI, ODU-FSF, ODU-BSF, ODU-FSD, ODU-BSD
Traces	Generates 64-bytes Trail Trace Identifier (TTI) as defined in ITU-T G.709
FTFL <sup>b</sup>	As defined in ITU-T G.709

### OPU Layer

Alarm	OPU-PLM
Payload type (PT) label	Generates and displays received PT value

### Forward Error Correction (FEC)

Errors	FEC-Correctable (Codeword), FEC-Uncorrectable (Codeword), FEC-Correctable (Symbol), FEC-Correctable (Bit), and FEC-Stress (Codeword)
--------	--

### ODU Multiplexing <sup>c</sup>

Alarms	OPU-MSIM, ODU-LOFLOM
--------	----------------------

### NOTES

- a. Available with ODUMUX option.
- b. Fault type and fault location.
- c. Available on the FTB-8130NGE only.

# SONET/SDH Functional Specifications (Cont'd)

## ADDITIONAL TEST AND MEASUREMENT FUNCTIONS

Power measurements	Supports power measurements, displayed in dBm (dBdsx for DS1), for optical and electrical interfaces.
Frequency measurements	Supports clock frequency measurements (i.e., received frequency and deviation of the input signal clock from nominal frequency), displayed in ppm and b/s (bps), for optical and electrical interfaces.
Frequency offset generation	Supports offsetting the clock of the transmitted signal on a selected interface to exercise clock recovery circuitry on network elements.
Dual DS <sub>n</sub> receivers	Supports two DS1 or DS3 receivers, allowing users to simultaneously monitor two directions of a circuit under test in parallel, resulting in quick isolation of the source of errors.
Performance monitoring	
The following ITU-T recommendations, and corresponding performance monitoring parameters, are supported on the IQS-8100 product line.	
ITU-T recommendation	Performance monitoring statistics
G.821	ES, EFS, EC, SES, UAS, ESR, SESR, DM
G.826	ES, EFS, EB, SES, BBE, UAS, ERS, SESR, BBER
G.828	ES, EFS, EB, SES, BBE, SEP, UAS, ESR, SESR, BBER, SEPI
G.829	ES, EFS, EB, SES, BBE, UAS, ESR, SESR, BBER
M.2100	ES, SES, UAS, ESR, SESR
M.2101	ES, SES, BBE, UAS, ESR, SESR, BBER
Pointer adjustment and analysis	
Generation and analysis of HO/AU and LO/TU pointer adjustments as per GR-253, and ITU-T G.707	
Generation	
<ul style="list-style-type: none"> <li>• Pointer increment and decrement</li> <li>• Pointer jump with or without NDF</li> <li>• Pointer value</li> </ul>	
Analysis	
<ul style="list-style-type: none"> <li>• Pointer increments</li> <li>• Pointer decrements</li> <li>• Pointer jumps (NDF, no NDF)</li> <li>• Pointer value and cumulative offset</li> </ul>	
Programmable error/alarm injection	Ability to inject errors/alarms in the following modes: Manual, Constant Rate, Burst, Periodic Burst and Continuous.
Service disruption time (SDT) measurements	The service disruption time test tool measures the time during which there is a disruption of service due to the network switching from the active channels to the backup channels. User-selectable triggers: all supported alarms and errors. Measurements: last disruption, shortest disruption, longest disruption, average disruption, total disruption, and service disruption count.
Round-trip delay (RTD) measurements	The round-trip delay test tool measures the time required for a bit to travel from the FTB-8120NGE/8130NGE transmitter back to its receiver after crossing a far-end loopback. Measurements are supported on all supported FTB-8120NGE/8130NGE interfaces and mappings. <sup>a</sup> Measurements: last RTD time, minimum, maximum, average, measurement count (no. of successful RTD tests), failed measurement count.
APS message control and monitoring	Ability to monitor and set up automatic protection switching messages (K1/K2 byte of SONET/SDH overhead).
Synchronization status	Ability to monitor and set up synchronization status messages (S1 byte of SONET/SDH overhead).
Signal label control and monitoring	Ability to monitor and set up payload signal labels (C2, V5 byte of SONET overhead).
Through mode	Ability to perform Through mode analysis of any incoming electrical (DS <sub>n</sub> , PDH) and optical line (OC-3/STM-1, OC-12/STM-4, OC-48/STM-16, OC-192/STM-64, OTU1 and OTU2).
M13 mux/demux	Ability to multiplex/demultiplex a DS1 signal into/from a DS3 signal. (Note: E1 to DS3 mux/demux available with G.747 software option.)
DS1 FDL	Support for DS1 Facility Data Link testing.
DS1 loopcodes	Support for generation of DS1 in-band loopcodes.
DS3 FEAC	Support for DS3 for-end alarms and loopback codewords.
Tandem connection monitoring (TCM) <sup>b</sup>	Tandem connection monitoring (TCM), Option 2 <sup>c</sup> , is used to monitor the performance of a subsection of a SONET/SDH path routed via different network providers. The FTB-8120NGE/8130NGE supports transmitting and receiving alarms and errors on a TCM link; also, transmission and monitoring of the tandem connection (TC) trace can be generated to verify the connection between TCM equipment. Error generation: TC-IEC, TC-BIP, TC-REI, OEI Error analysis: TC-IEC, TC-REI, OEI, TC-VIOL Alarm generation: TC-RDI, TC-UNEQ, ODI, TC-LTC, TC-IAIS Alarm analysis: TC-TIM, TC-RDI, TC-UNEQ, ODI, TC-LTC, TC-IAIS

## ADDITIONAL FEATURES

Scripting	The built-in scripting engine and embedded macro-recorder provide a simple means of automating test cases and routines. Embedded scripting routines provide a powerful means of creating advanced test scripts. Available only on the FTB-400.
Reports	Supports generation of test reports in .html, .csv, .txt, .pdf formats. Contents of reports are customizable by the user.
Power-up and restore	In the event of a power failure to the unit, the active test configuration and test logger are saved and restored upon bootup.
Store and load configurations	Ability to store and load test configurations to/from non-volatile memory.
Alarm hierarchy	Alarms are displayed according to a hierarchy based on root cause. Secondary effects are not displayed. This hierarchy serves to facilitate alarm analysis.
Configurable test views	This allows users to customize their test views, i.e., to dynamically insert or remove test tabs/windows, in addition to creating new test windows, so as to accurately match their testing needs. Available only on the FTB-400 user interface.
Configurable test timer	Provides the ability for a user to set pre-defined test start and stop times.
Remote control	Available with Windows-based remote management software known as Visual Guardian Lite (optional software package). This allows users to remotely monitor and control the FTB-8120NGE/8130NGE modules via standard Ethernet connection.

### NOTES

- Except on OTN mappings.
- HOP and LOP supported.
- G.707 option 2.

# Ethernet Interfaces

## ELECTRICAL INTERFACES

	10Base-T	100Base-T	1000Base-T
Tx bit rate	10 Mbit/s	125 Mbit/s	1 Gbit/s
Tx accuracy (ppm)	±100	±100	±100
Rx bit rate	10 Mbit/s	125 Mbit/s	1 Gbit/s
Rx measurement accuracy (ppm)	±4.6	±4.6	±4.6
Duplex mode	Half and full duplex	Half and full duplex	Full duplex
Jitter compliance	IEEE 802.3	IEEE 802.3	IEEE 802.3
Connector	RJ-45	RJ-45	RJ-45
Maximum reach (m)	100	100	100

## 100 Mbit/s AND GigE OPTICAL INTERFACES

	100Base-FX	100Base-LX	1000Base-SX	1000Base-LX	1000Base-ZX
Wavelength (nm)	1310	1310	850	1310	1550
Tx level (dBm)	-20 to -15	-15 to -8	-9 to -3	-9.5 to -3	0 to +5
Rx level sensitivity (dBm)	-31	-28 to -8	-20	-22	-22
Maximum reach	2 km	15 km	550 m	10 km	80 km
Transmission bit rate (Gbit/s)	0.125	0.125	1.25	1.25	1.25
Reception bit rate (Gbit/s)	0.125	0.125	1.25	1.25	1.25
Tx operational wavelength range (nm)	1280 to 1380	1261 to 1360	830 to 860	1270 to 1360	1540 to 1570
Measurement accuracy					
Frequency (ppm)	±4.6	±4.6	±4.6	±4.6	±4.6
Optical power (dB)	±2	±2	±2	±2	±2
Maximum Rx before damage (dBm)	+3	+3	+6	+6	+6
Jitter compliance	ANSI X3.166	IEEE 802.3	IEEE 802.3	IEEE 802.3	IEEE 802.3
Ethernet classification	ANSI X3.166	IEEE 802.3	IEEE 802.3	IEEE 802.3	IEEE 802.3
Laser type	LED	FP	VCSEL	FP	DFB
Eye safety	CLASS 1	CLASS 1	CLASS 1	CLASS 1	CLASS 1
Connector	LC	LC	LC	LC	LC
Transceiver type	SFP	SFP	SFP	SFP	SFP

## 10 GigE OPTICAL INTERFACES

	10GBASE-SW	10GBASE-SR	10GBASE-LW	10GBASE-LR	10GBASE-EW	10GBASE-ER
Wavelength (nm)	850	850	1310	1310	1550	1550
	Multimode	Multimode	Singlemode	Singlemode	Singlemode	Singlemode
Tx level (802.3ae-compliant) (dBm)	-7.3 to -1	-7.3 to -1	-8.2 to +0.5	-8.2 to +0.5	-4.7 to +4.0	-4.7 to +4.0
Rx level sensitivity (dBm)	-9.9 to -1.0	-9.9 to -1.0	-14.4 to +0.5	-14.4 to +0.5	-15.8 to -1.0	-15.8 to -1.0
Transmission bit rate	9.95328 Gbit/s ± 4.6 ppm <sup>a</sup>	10.3125 Gbit/s ± 4.6 ppm <sup>a</sup>	9.95328 Gbit/s ± 4.6 ppm <sup>a</sup>	10.3125 Gbit/s ± 4.6 ppm <sup>a</sup>	9.95328 Gbit/s ± 4.6 ppm <sup>a</sup>	10.3125 Gbit/s ± 4.6 ppm <sup>a</sup>
Reception bit rate	9.95328 Gbit/s ± 135 ppm	10.3125 Gbit/s ± 135 ppm	9.95328 Gbit/s ± 135 ppm	10.3125 Gbit/s ± 135 ppm	9.95328 Gbit/s ± 135 ppm	10.3125 Gbit/s ± 135 ppm
Tx operational wavelength range (802.3ae-compliant) (nm)	840 to 860	840 to 860	1260 to 1355	1260 to 1355	1530 to 1565	1530 to 1565
Measurement accuracy						
Frequency (ppm)	±4.6	±4.6	±4.6	±4.6	±4.6	±4.6
Optical power (dB)	±2	±2	±2	±2	±2	±2
Maximum Rx before damage (dBm)	0	0	+1.5	+1.5	+4.0	+4.0
Jitter compliance	IEEE 802.3ae	IEEE 802.3ae	IEEE 802.3ae	IEEE 802.3ae	IEEE 802.3ae	IEEE 802.3ae
Ethernet classification	IEEE 802.3ae	IEEE 802.3ae	IEEE 802.3ae	IEEE 802.3ae	IEEE 802.3ae	IEEE 802.3ae
Laser type	VCSEL	VCSEL	DFB	DFB	EML	EML
Eye safety	Class 1 laser; complies with 21 CFR 1040.10 and IEC 60825-1	Class 1 laser; complies with 21 CFR 1040.10 and IEC 60825-1	Class 1 laser; complies with 21 CFR 1040.10 and IEC 60825-1	Class 1 laser; complies with 21 CFR 1040.10 and IEC 60825-1	Class 1M laser; complies with 21 CFR 1040.10 and IEC 60825-1	Class 1M laser; complies with 21 CFR 1040.10 and IEC 60825-1
Connector	Duplex LC	Duplex LC	Duplex LC	Duplex LC	Duplex LC	Duplex LC
Transceiver type (compliant with XFP MSA)	XFP	XFP	XFP	XFP	XFP	XFP

### NOTE

a. When clocking is in internal mode.

# Ethernet Functional Specifications

## TESTING (10M TO GigE)

RFC 2544	Throughput, back-to-back, frame loss and latency measurements according to RFC 2544. Frame size: RFC-defined sizes, user-configurable.
BERT	Unframed, framed layer 1, framed layer 2 supported with or without VLAN Q-in-Q.
Patterns (BERT)	PRBS 2E9-1, PRBS 2E11-1, PRBS 2E15-1, PRBS 2E20-1, PRBS 2E23-1, PRBS 2E31-1, CRPAT, CSPAT, CJTPAT, Short CRTPAT, Long CRTPAT and up to 10 user patterns. Capability to invert patterns.
Error insertion (BERT)	FCS, bit and symbol.
Error measurement	Jabber/giant, runt, undersize, oversize, FCS, symbol, idle, carrier sense, alignment, collision, late collision, excessive collision, UDP and IP header checksum.
Error measurement (BERT)	Bit error, symbol error, idle error, bit mismatch 0, bit mismatch 1, performance monitoring (G.821 and G.826).
Alarm insertion (BERT)	LOS, pattern loss.
Alarm detection	LOS, link down, pattern loss, no traffic.
Service disruption time measurement (BERT)	Defect or No Traffic mode. Disruption time statistics include shortest, longest, last, average, total and count.
VLAN stacking	Capability to generate one stream with up to three layers of VLAN (including IEEE 802.1ad Q-in-Q tagged VLAN).
Ethernet statistics	Multicast, broadcast, unicast, N-unicast, frame size distribution, bandwidth, utilization, frame rate.
Flow control statistics	Pause time, last pause time, max. pause time, min. pause time, paused frames, abort frames, frames Tx, frames Rx.
Advanced auto-negotiation	Capability to auto-negotiate the rate, duplex and flow control capabilities with another Ethernet port. Configurable auto-negotiation parameters. Display of link partner capabilities. Fault injection: offline, link failure, auto-negotiation error.
Remote ENIU configuration	Capability to support the operation, administration and maintenance (OAM) layer between an FTB-8120NGE/8130NGE and ADC ENIUs. This includes detection of ENIUs in the network and sending loopback commands.
Multistream generation	Capability to transmit up to 10 streams. Configuration parameters are packet size, transmission mode (N-Frames, Burst, N-Burst, Ramp, N-Ramp and Continuous), MAC source/destination address, VLAN ID, VLAN priority, IP source/destination address, ToS field, DSCP field, TTL, UDP source/destination port and payload. (Available with Frame-Analyzer software option.)
Traffic analysis	Capability to analyze the incoming traffic and provide statistics according to a set of up to 10 configurable filters. Filters can be configured for MAC source/destination address, VLAN ID, VLAN priority, IP source/destination address, ToS field, DSCP field, TCP source/destination port and UDP source/destination port. VLAN filtering can be applied to any of the stacked VLAN layers. (Available with Frame-Analyzer software option.)
Ethernet statistics	Multicast, broadcast, unicast, N-unicast, pause frame, frame size distribution, bandwidth, utilization, frame rate, frame loss, out-of-sequence frames and in-sequence frames. (Available with Frame-Analyzer software option.)
Jitter statistics generation	Packet-jitter simulation-VoIP G.711, VoIP G.723.1, G.729, user-defined. Analysis: delay variation statistics (ms)-min., max., last, average, number of samples and jitter measurement estimate. (Available with Frame-Analyzer software option.)

## ADDITIONAL TEST AND MEASUREMENT FUNCTIONS (10M TO GigE)

Power measurement	Supports optical power measurement, displayed in dBm.
Frequency measurement	Supports clock frequency measurements (i.e., received frequency and deviation of the input signal clock from nominal frequency).
Frequency offset measurement	Range: $\pm 120$ ppm Resolution: 1 ppm Accuracy: $\pm 4.6$ ppm
Dual test set	Performs end-to-end, bidirectional performance testing (as required by leading standards bodies)-remote FTB-8120NGE/8130NGE controlled via the LAN connection under test.
DHCP client	Capability to connect to a DHCP server to obtain its IP address and subnet mask for connecting on to the network.
Smart Loopback	Capability to return traffic to the local unit by swapping packet overhead up to layer 4 of the OSI stack.

## TESTING (10 GigE)

RFC 2544	Throughput, back-to-back, frame loss and latency measurements according to RFC 2544. Frame size: RFC-defined sizes, user-configurable.
Patterns (BERT)	PRBS 2E9-1, PRBS 2E11-1, PRBS 2E15-1, PRBS 2E20-1, PRBS 2E23-1, PRBS 2E31-1, and up to ten user patterns
Error insertion (BERT)	FCS, bit, 64B/66B Block
Error measurement	LAN/WAN: jabber/giant, runt, undersize, oversize, FCS, 64B/66B Block WAN: B1, B2, B3, REI-L, REI-P UDP, TCP and IP header checksum
Error measurement (BERT)	Bit error, bit mismatch 0, bit mismatch 1, performance monitoring (G.821 and G.826)
Alarm insertion	LOS, link down, local fault, remote fault, pattern loss (BERT) WAN: SEF, LOF, AIS-L, RDI-L, AIS-P, RDI-P, LCD-P, LOP-P, ERDI-PSD, ERDI-PCD, ERDI-PPD, UNEQ-P
Alarm detection	LOS, link down, local fault, remote fault, frequency offset, pattern loss (BERT) WAN: SEF, LOF, AIS-L, RDI-L, AIS-P, RDI-P, LCD-P, LOP-P, ERDI-PSD, ERDI-PCD, ERDI-PPD, PLM-P, UNEQ-P, link (WIS)
Service disruption time measurement (BERT)	Defect or No Traffic mode. Disruption time statistics include shortest, longest, last, average, total and count.
VLAN stacking	Capability to generate one stream with up to three layers of VLAN (including IEEE802.1ad Q-in-Q tagged VLAN).
Ethernet statistics	Multicast, broadcast, unicast, N-unicast, frame size distribution, bandwidth, utilization, frame rate.
Flow control statistics	Pause time, last pause time, max. pause time, min. pause time, paused frames, abort frames, frames Tx, frames Rx.
Multistream generation	Capability to transmit up to 10 streams. Configuration parameters are packet size, transmission mode (N-Frames, Burst, N-Burst, Ramp, N-Ramp and Continuous), MAC source/destination address, VLAN ID, VLAN priority, IP source/destination address, ToS field, DSCP field, TTL, UDP source/destination port and payload. (Available with Frame-Analyzer software option.)
Traffic analysis	Capability to analyze the incoming traffic and provide statistics according to a set of up to 10 configurable filters. Filters can be configured for MAC source/destination address, VLAN ID, VLAN priority, IP source/destination address, ToS field, DSCP field, TCP source/destination port and UDP source/destination port. VLAN filtering can be applied to any of the stacked VLAN layers. (Available with Frame-Analyzer software option.)
Ethernet statistics	Multicast, broadcast, unicast, N-unicast, pause frame, frame size distribution, bandwidth, utilization, frame rate, frame loss, out-of-sequence frames and in-sequence frames. (Available with Frame-Analyzer software option.)
Jitter statistics generation	Packet-jitter simulation-VoIP G.711, VoIP G.723.1, G.729, user-defined. Analysis: delay variation statistics (ms)-min., max., last, average, number of samples and jitter measurement estimate. (Available with Frame-Analyzer software option.)

## ADDITIONAL TEST AND MEASUREMENT FUNCTIONS (10 GigE)

Power measurement	Supports optical power measurement, displayed in dBm.
Frequency generation and measurement	Supports clock frequency generation and measurements (i.e., received frequency and deviation of the input signal clock from nominal frequency). Frequency offset generation: Range: $\pm 50$ ppm Resolution: $\pm 1$ ppm Accuracy: $\pm 4.6$ ppm Frequency offset measurement: Range: $\pm 135$ ppm Resolution: $\pm 1$ ppm Accuracy: $\pm 4.6$ ppm
Signal label control and monitoring	Ability to configure and monitor J0 Trace, J1 Trace and payload signal label C2 (WAN).
Dual test set	Performs end-to-end, bidirectional performance testing (as required by leading standards bodies)-remote FTB-8120NGE/8130NGE controlled via the LAN connection under test.
DHCP client	Capability to connect to a DHCP server to obtain its IP address and subnet mask to connect to the network.
Smart Loopback	Capability to return traffic to the local unit by swapping packet overhead up to layer 4 of the OSI stack.



## Ethernet Functional Specifications (Cont'd)

### ADDITIONAL FEATURES

Expert mode	Ability to set thresholds in RFC 2544 and BERT mode to provide a pass/fail status.
Scripting	The built-in Visual Basic .NET scripting engine and embedded macrorecorder provide a simple means of automating test cases and routines. Embedded scripting routines provide a powerful means of creating advanced test scripts. <sup>a</sup>
Event logger	Supports logging of test results, and the ability to print, export (to a file), or export the information contained in the logging tool.
Power up and restore <sup>a</sup>	In the event of a power failure to the unit, the active test configuration and results are saved and restored upon bootup.
Save and load configuration	Ability to store and load test configurations to/from non-volatile memory.
Configurable test views	Allows users to customize their test views, i.e., to dynamically insert or remove test tabs/windows, in addition to creating new test windows, so as to accurately match their testing needs. <sup>a</sup>
Configurable test timer	Allows a user to set a specific start, stop and duration for tests.
Test favorites	Capability to select and load from predefined or user-modified test conditions.
Report generation	Ability to generate test reports in the following user-selectable formats: .pdf, .html, .txt and .csv.
Graph	Allows to graphically display the test statistics of the performance (RFC 2544).
Screen capturing <sup>b</sup>	Capability to gather a snap-shot of the screen for future use.
Logger printing <sup>b</sup>	Capability to send logger messages to a supported local printer.
Remote control	Remote control through Visual Guardian Lite software or VNC.

#### NOTES

- a. Available on the FTB-400 Universal Test System platform only.  
b. Available on the FTB-200 Compact Platform only.

## Fibre Channel Interfaces

### FC-1X/2X/4X

	850	1310	1310	1550
Wavelength (nm)	850	1310	1310	1550
Tx level (dBm)	-9 to -2.5	-8.4 to -3	0 to +5	+1 to +5
Rx level sensitivity (dBm)	-15 at FC-4 -18 at FC-2 -20 at FC-1	-18 at FC-4 -21 at FC-2 -22 at FC-1	-18 at FC-4 -21 at FC-2 -22 at FC-1	-16.5 at FC-4 -20.5 at FC-2 -22 at FC-1
Maximum reach	500 m on 50/125 µm MMF 300 m on 62.5/125 µm MMF	4 km	30 km	40 km
Transmission bit rate (Gbit/s)	1.06/2.125/4.25	1.06/2.125/4.25	1.06/2.125/4.25	1.06/2.125/4.25
Reception bit rate (Gbit/s)	1.06/2.125/4.25	1.06/2.125/4.25	1.06/2.125/4.25	1.06/2.125/4.25
Tx operational wavelength range (nm)	830 to 860	1260 to 1350	1285 to 1345	1544.5 to 1557.5
Measurement accuracy:				
Frequency (ppm)	±4.6	±4.6	±4.6	±4.6
Optical power (dB)	±2	±2	±2	±2
Max Rx before damage (dBm)	+3	+3	+3	+3
Jitter compliance	ANSI FC-PI-2	ANSI FC-PI-2	ANSI FC-PI-2	ANSI FC-PI-2
FC classification	ANSI FC-PI-2	ANSI FC-PI-2	ANSI FC-PI-2	ANSI FC-PI-2
Laser type	VCSEL	Fabry-Perot	DFB	DFB
Eye safety	Class 1	Class 1	Class 1	Class 1
Connector	LC	LC	LC	LC
Transceiver type	SFP	SFP	SFP	SFP

### FC-10X

	850	1310	1310	1550	1550
Wavelength (nm)	850	1310	1310	1550	1550
Tx level (dBm)	-5 to -1	+0.5 max	-6 to -1	-1 to +2	0 to +4
Rx level sensitivity (dBm)	-11.1	-12.6	-14.4	-16	-23
Maximum reach	300 m	10 km	10 km	40 km	80 km
Transmission bit rate (Gbit/s)	10.5	10.5	10.5	10.5	10.5
Reception bit rate (Gbit/s)	10.5	10.5	10.5	10.5	10.5
Tx operational wavelength range (nm)	840 to 860	1260 to 1355	1290 to 1330	1530 to 1565	1530 to 1565
Measurement accuracy:					
Frequency (ppm)	±4.6	±4.6	±4.6	±4.6	±4.6
Optical power (dB)	±2	±2	±2	±2	±2
Max Rx before damage (dBm)	+6	+6	+6	+2	+4
Jitter compliance	ANSI FC-PI-3	ANSI FC-PI-3	ANSI FC-PI-3	ANSI FC-PI-3	ANSI FC-PI-3
FC classification	ANSI FC-PI-3	ANSI FC-PI-3	ANSI FC-PI-3	ANSI FC-PI-3	ANSI FC-PI-3
Laser type	VCSEL	DFB	DFB	EML	EML
Eye safety	Class 1	Class 1	Class 1	Class 1	Class 1
Connector	LC	LC	LC	LC	LC
Transceiver type	XFP	XFP	XFP	XFP	XFP

## Fibre Channel Functional Specifications

### TESTING (1X, 2X, 4X AND 10X)

BERT	Unframed, framed FC-1, framed, FC-2
Patterns (BERT)	PRBS 2E31-1, 2E23-1, 2E20-1, 2E15-1, 2E11-1, 2E9-1 CSPAT, CRPAT, CJTPAT, and 10 user-defined 32 bits patterns
Error insertion	Bit error, symbol error, oversize error, CRC error, undersize error and block error
Error measurement	Bit error, symbol error, oversize error, CRC error, undersize error and block error
Alarm insertion	LOS, pattern loss
Alarm detection	LOS, pattern loss
Buffer-to-buffer credit testing	Buffer-to-buffer credit estimation based on latency
Latency	Round-trip latency measurement

### ADDITIONAL TEST AND MEASUREMENT FUNCTIONS (1X, 2X, 4X AND 10X)

Power measurement	Support optical power measurement, displayed in dBm.
Frequency measurement	Supports clock frequency measurements (i.e., received frequency and deviation of the input signal clock from nominal frequency).
Frequency offset measurement	Range: $\pm 120$ ppm Resolution: 1 ppm Accuracy: $\pm 4.6$ ppm

## Additional Specifications

### FTB-8120NGE

Next-generation SONET/SDH 2.5 Gbit/s and OTN 2.7 Gbit/s  
Supports up to 2.5/2.7 Gbit/s optical rates, as well as electrical DSn/PDH interfaces

#### Test Interfaces

OTN: OTU1 (2.7 Gbit/s)  
SONET: STS-1e, STS-3e, OC-3, OC-12, OC-48  
SDH: STM-0e, STM-1e, STM-0, STM-4, STM-16  
DSn: DS1, DS3, Dual DS1 Rx, Dual DS3 Rx  
PDH: E1, E2, E3, E4  
Ethernet: 10/100/1000M electrical and 100/1000M optical  
FC: 1x, 2x, 4x

### FTB-8130NGE

Next-generation SONET/SDH 10 Gbit/s and OTN 10.7 Gbit/s  
Supports up to 10/10.7 Gbit/s optical rates, as well as electrical DSn/PDH interfaces

OTN: OTU1 (2.7 Gbit/s), OTU2 (10.7 Gbit/s)  
SONET: STS-1e, STS-3e, OC-3, OC-12, OC-48, OC-192  
SDH: STM-0e, STM-1e, STM-0, STM-4, STM-16, STM-64  
DSn: DS1, DS3, Dual DS1 Rx, Dual DS3 Rx  
PDH: E1, E2, E3, E4  
Ethernet: 10/100/1000M electrical, 100/1000M optical and 10 GigE LAN/WAN  
FC: 1x, 2x, 4x, 10x

### GENERAL SPECIFICATIONS

	FTB-8120NGE	FTB-8130NGE
Weight (without transceiver)	0.9 kg (2.0 lb)	0.9 kg (2.0 lb)
Size (H x W x D)	51 mm x 76 mm x 254 mm (2 in x 3 in x 10 in)	51 mm x 76 mm x 254 mm (2 in x 3 in x 10 in)
Temperature		
operating	0 °C to 40 °C (32 °F to 104 °F)	0 °C to 40 °C (32 °F to 104 °F)
storage	-40 °C to 60 °C (-40 °F to 140 °F)	-40 °C to 60 °C (-40 °F to 140 °F)

#### NOTE

a. When clocking is in internal mode.

ORDERING INFORMATION

**FTB-81XX-XX-XX-XX-XX-XX-XX-XX-XX**

**Model** ■

See models listed on the previous page.

**Test options** ■

**SONET** = SONET-BASE-SW  
**SDH** = SDH-BASE-SW  
**SONET-SDH** = Software option for combined SONET/SDH functionality

**Rate options** <sup>a</sup> ■

**155** = 155 Mbit/s (OC-3/STM-1)  
**622** = 622 Mbit/s (OC-12/STM-4)  
**2.5G** = 2.5/2.7 Gbit/s (OC-48/STM-16, OTU1)  
**10G** = 10/10.7 Gbit/s (OC-192/STM-64, OTU2) <sup>b</sup>

All rate enablers are included.

**Fibre Channel rate options** <sup>a</sup> ■

**FC1X** = 1x Fibre Channel interface  
**FC2X** = 2x Fibre Channel interface  
**FC4X** = 4x Fibre Channel interface  
**FC10X** = 10x Fibre Channel interface <sup>b</sup>

**Options** <sup>a</sup> ■

**G.747** <sup>c</sup>  
**DS1-FDL**  
**DS3-FEAC**  
**DUAL RX**  
**SMART-MODE**  
**TCM** = Tandem connection monitoring  
**OTU1** = OTN optical rate 2.7 Gbit/s  
**OTU2** = OTN optical rate 10.7 Gbit/s <sup>b</sup>  
**ODUMUX** = ODU MUX functionality <sup>b, g</sup>  
**100optical** = 100 Mbit/s optical Ethernet  
**Frame-Analyzer** = Multiple stream generation and analysis

**Next-generation options** <sup>a</sup> ■

**00** = Without next-gen software  
**HO-VCAT** = High-order virtual concatenation  
**LO-VCAT** = Low-order virtual concatenation  
**LCAS** = Link capacity adjustment scheme <sup>e</sup>  
**GFP-F** = Generic framing procedure-framed  
**EoS** = Ethernet-over-SONET/SDH <sup>d, f</sup>

Example: FTB-8120NGE-SONET-SDH-155-622-2.5G-SMART-MODE-HO-VCAT-8190-8590-81900

**Transceivers SFP test port** <sup>a</sup> ■

**00** = SFP test port  
**FTB-8190** = Multirate (155/622 Mbit/s, 2.5/2.7 Gbit/s, GigE/FC/2FC) optical SFP transceiver module with LC connector; 1310 nm; 15 km reach  
**FTB-8191** = Multirate (155/622 Mbit/s, 2.5/2.7 Gbit/s, GigE/FC/2FC) optical SFP transceiver module with LC connector; 1310 nm; 40 km reach  
**FTB-8192** = Multirate (155/622 Mbit/s, 2.5/2.7 Gbit/s, GigE/FC/2FC) optical SFP transceiver module with LC connector; 1550 nm; 80 km reach  
**FTB-8193** = Multirate (155/622 Mbit/s, 2.5/2.7 Gbit/s, GigE/FC/2FC) optical SFP transceiver module with LC connector; 1550 nm; 40 km reach  
**FTB-85910** <sup>h</sup> = 100Base-FX (1310 nm) MM, LC connectors; optical SFP transceiver module for FTB-8510B Packet Blazer  
**FTB-85911** <sup>h</sup> = 100Base-LX (1310 nm) SM, LC connectors; optical SFP transceiver module for FTB-8510B Packet Blazer  
**FTB-85912** <sup>i</sup> = SFP modules GigE/FC/2FC/4FC at 850 nm, MMF, < 500 m  
**FTB-85913** <sup>i</sup> = SFP modules GigE/FC/2FC/4FC at 1310 nm, SMF, < 4 km  
**FTB-85914** <sup>i</sup> = SFP modules GigE/FC/2FC/4FC at 1310 nm, SMF, < 30 km  
**FTB-85915** <sup>i</sup> = SFP modules GigE/FC/2FC/4FC at 1550 nm, SMF, < 40 km

**Transceivers SFP Ethernet add/drop port** <sup>a, d</sup> ■

**00** = Without Ethernet add/drop  
**FTB-8190** = Multirate (155/622 Mbit/s, 2.5/2.7 Gbit/s, GigE/FC/2FC) optical SFP transceiver module with LC connector; 1310 nm; 15 km reach  
**FTB-8191** = Multirate (155/622 Mbit/s, 2.5/2.7 Gbit/s, GigE/FC/2FC) optical SFP transceiver module with LC connector; 1310 nm; 40 km reach  
**FTB-8192** = Multirate (155/622 Mbit/s, 2.5/2.7 Gbit/s, GigE/FC/2FC) optical SFP transceiver module with LC connector; 1550 nm; 80 km reach  
**FTB-8193** = Multirate (155/622 Mbit/s, 2.5/2.7 Gbit/s, GigE/FC/2FC) optical SFP transceiver module with LC connector; 1550 nm; 40 km reach  
**FTB-8590** = GigE/FC/2FC optical SFP transceiver module with LC connector; 850 nm; MMF, < 500 m reach  
**FTB-8591** = GigE/FC/2FC optical SFP transceiver module with LC connector; 1310 nm; 10 km reach  
**FTB-8592** = GigE/FC/2FC optical SFP transceiver module with LC connector; 1550 nm; 90 km reach

**Transceivers XFP test port** <sup>a</sup> ■

**00** = Without XFP telecom  
**FTB-81900** = Multirate (10/10.7 Gbit/s) optical XFP transceiver module with LC connector; 1310 nm; 10 km reach  
**FTB-81901** = Multirate (10/10.7 Gbit/s) optical XFP transceiver module with LC connector; 1550 nm; 40 km reach  
**FTB-81902** = Multirate (10/10.7 Gbit/s) optical XFP transceiver module with LC connector; 1550 nm; 80 km reach  
**FTB-85900** = 10GBase-SR/-SW (850 nm, LAN/WAN PHY) LC connectors; optical XFP transceiver module  
**FTB-85901** = 10GBase-LR/-LW (1310 nm, LAN/WAN PHY) LC connectors; optical XFP transceiver module  
**FTB-85902** = 10GBase-ER/-EW (1550 nm, LAN/WAN PHY) LC connectors; optical XFP transceiver module

**NOTES**

- Multiple options can be purchased to suit the required test application.
- Applies only to FTB-8130NGE.
- Enables E1/2M in DS3/45M analysis, as per ITU-T G.747 recommendation.
- Ethernet SFP transceiver must be purchased with EoS software option.
- Must be combined with the HO-VCAT or LO-VCAT option.
- Must be combined with the GFP-F option.
- Must be combined with OTU1 and OTU2.
- Must be used with 100 Optical.
- Available with 4x Fibre Channel interface only.

EXFO Corporate Headquarters > 400 Godin Avenue, Quebec City (Quebec) G1M 2K2 CANADA | Tel.: +1 418 683-0211 | Fax: +1 418 683-2170 | info@EXFO.com

Toll-free: +1 800 663-3936 (USA and Canada) | [www.EXFO.com](http://www.EXFO.com)

<b>EXFO America</b>	3701 Plano Parkway, Suite 160 Plano, TX 75075 USA	Tel.: +1 800 663-3936	Fax: +1 972 836-0164
<b>EXFO Asia</b>	151 Chin Swee Road, #03-29 Manhattan House SINGAPORE 169876	Tel.: +65 6333 8241	Fax: +65 6333 8242
<b>EXFO China</b>	No. 88 Fuhua First Road Central Tower, Room 801, Futian District Beijing New Century Hotel Office Tower, Room 1754-1755 No. 6 Southern Capital Gym Road	Shenzhen 518048 P. R. CHINA Beijing 100044 P. R. CHINA	Tel.: +86 (755) 8203 2300 Fax: +86 (755) 8203 2306 Tel.: +86 (10) 6849 2738 Fax: +86 (10) 6849 2662
<b>EXFO Europe</b>	Omega Enterprise Park, Electron Way Chandlers Ford, Hampshire S053 4SE ENGLAND	Tel.: +44 2380 246810	Fax: +44 2380 246801
<b>EXFO Service Assurance</b>	285 Mill Road Chelmsford, MA 01824 USA	Tel.: +1 978 367-5600	Fax: +1 978 367-5700

EXFO is certified ISO 9001 and attests to the quality of these products. This device complies with Part 15 of the FCC Rules. Operation is subject to the following two conditions: (1) this device may not cause harmful interference, and (2) this device must accept any interference received, including interference that may cause undesired operation. EXFO has made every effort to ensure that the information contained in this specification sheet is accurate. However, we accept no responsibility for any errors or omissions, and we reserve the right to modify design, characteristics and products at any time without obligation. Units of measurement in this document conform to SI standards and practices. In addition, all of EXFO's manufactured products are compliant with the European Union's WEEE directive. For more information, please visit [www.EXFO.com/recycle](http://www.EXFO.com/recycle). Contact EXFO for prices and availability or to obtain the phone number of your local EXFO distributor.

For the most recent version of this spec sheet, please go to the EXFO website at <http://www.EXFO.com/specs>

In case of discrepancy, the Web version takes precedence over any printed literature.